

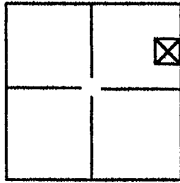
CORNER RECORD

Document Number 20110033

City of _____

County of PLACER, California

Brief Legal Description North Boundary Monumentation of Parcel Map DPM 20080490, Por. E1/2 of Sec. 12, T13N-R7E, M.D.M. Book 35 Parcel Maps Page 18, P.C.R.



Sec. 12

T13N

R7E

CORNER TYPE

Government Corner Control
 Meander Property
 Rancho Other

Date of Survey 19 & 21 July 2011

COORDINATES(Optional)

N. _____
 E. _____
 Zone _____ NAD27 NAD83
 NAD83 Epoch _____
 Elevation _____
 Vert. Datum: NGVD29 NAV88
 Meas. Units: Metric Imperial

Corner - Left as found Found and tagged Established Reestablished Rebuilt

Identification and type of corner found: Evidence used to identify or procedure used to establish or reestablish the corner:

Found existing monuments from Book 35 Parcel Maps Page 18 P.C.R. on North boundary set intermediate points along boundary for future fencing. Monuments found were 5/8 bars with LS3639 caps.

A description of the physical condition of the monument as found and as set or reset: Monuments found in original condition.

Monuments set were 3/4 bars with aluminum caps stamped LS3639

SURVEYOR'S STATEMENT

This Corner Record was prepared by me or under my direction in conformance with

the Land Surveyor's Act on 22 July 2011

Signed Ralph Miller P.L.S. or R.C.E. Number LS3639



COUNTY SURVEYOR'S STATEMENT

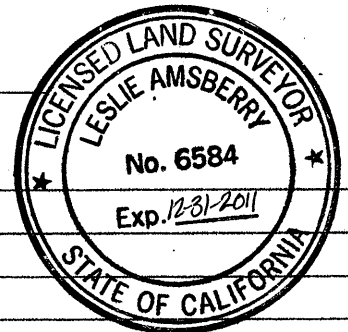
This Corner Record was received 7/26/2011 and examined

and filed July 29, 2011

Signed Leslie Amshery P.L.S. or R.C.E. Number 6584

Title Deputy County Surveyor

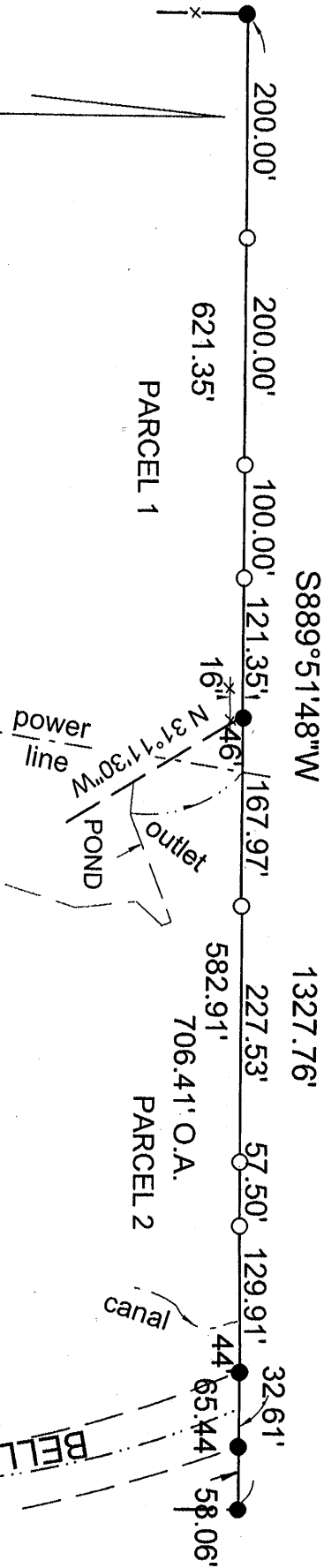
County Surveyor's Comment _____



BOOK 14, CORNER RECORDS, PAGE 69

- Found 5/8 bar LS3639 cap
- Set 3/4 bar LS3639 alum. cap

SKETCH TO ACCOMPANY CORNER RECORD
 PATITCH PROPERTY NORTH BOUNDARY MONUMENTATION
 DPM 20080490 - BOOK 35 PARCEL MAPS PAGE 18, P.C.R.
 Por. E1/2 E1/2 Sec 12, T13N-R7E, M.D.M. Unincorporated
 Territory of Placer County, California
 Ralph Miller LS3639 July 2011



69
 PAGE RECORDS, 141
 Book