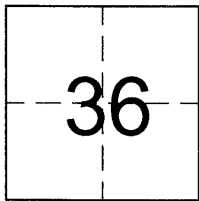


CORNER RECORD

COUNTY OF PLACER, CALIFORNIA

City of \_\_\_\_\_ Document Number 20110034

Brief Legal Description A portion of Lot 5, Block 26, Tahoe Pines, C/Maps/12



T15N  
R16E

CORNER TYPE

Government Corner  Control   
Meander  Property   
Rancho  Other   
Date of Survey 07-21-11

COORDINATES (Optional)

N. \_\_\_\_\_  
E. \_\_\_\_\_  
Zone \_\_\_\_\_ NAD27  NAD83   
NAD83 Epoch \_\_\_\_\_  
Elev. \_\_\_\_\_  
Vert. Datum: NGVD29  NAVD88   
Meas. Units: Metric  Imperial

Corner - Left as found  Found and tagged  Established  Reestablished  Rebuilt

Identification and type of corner found: Evidence used to identify or procedure used to establish or reestablish the corner:  
See sketch on back. Monuments found, not of record are as follows:

Found 3/4" CIP in record position at Northeast corner of Lot 1, Block 28 per C/Maps/12. Found 1-1/2" iron pipe in record position at Northeast corner of Lot 8, Block 27 per C/Maps/12. Found 3/4" iron pipe at Southwest corner of Lot 1, Block 28 per 2/CR/178. Found 1" iron pipe in position per 13/RS/43 (See exhibit for record info).

A description of the physical condition of the monument as found and as set or reset: \_\_\_\_\_

See sketch on back.

Set 5/8" rebar tagged LS 6819 in record location per 13/RS/43.

SURVEYOR'S STATEMENT

This Corner Record was prepared by me or under my direction in conformance with the Land Surveyor's Act on July 22, 2011

Signed [Signature] P.L.S. or R.C.E. No. 6819



COUNTY SURVEYOR'S STATEMENT

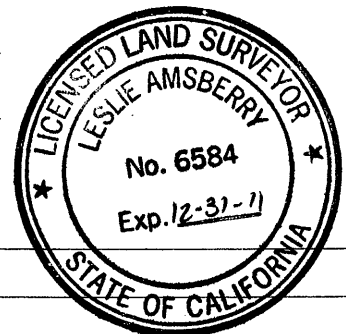
This Corner Record was received July 28, 2011

and examined and filed, August 11, 2011

Signed [Signature] P.L.S. or R.C.E. No. 6584

Title, Deputy County Surveyor

County Surveyor's Comment \_\_\_\_\_



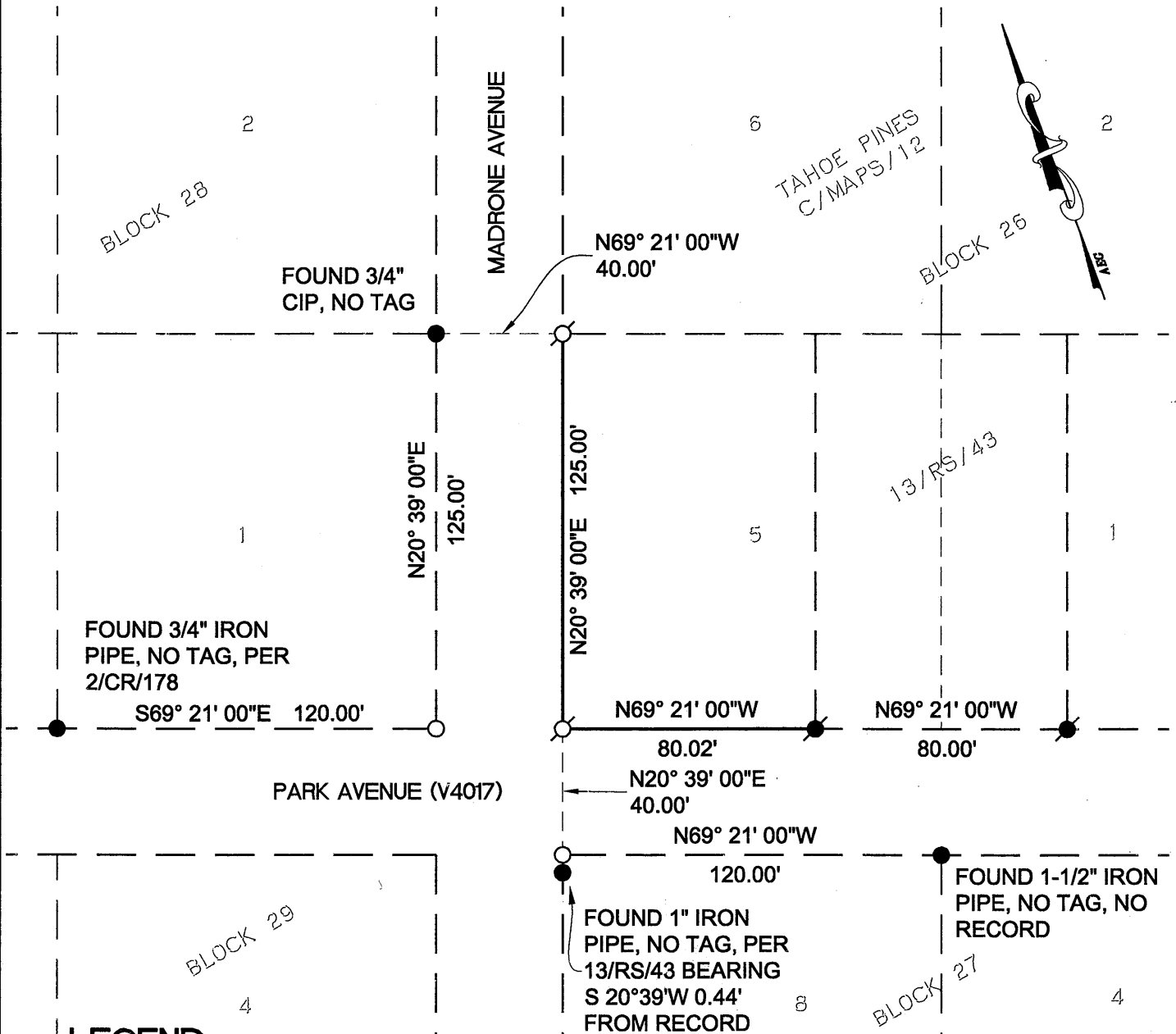
BOOK 14 CORNER RECORDS PAGE 10

# PLAT OF SURVEY

A PORTION OF LOT 5, BLOCK 26, TAHOE PINES, C/MAPS/12, P.C.R.  
SECTION 36, TOWNSHIP 15 NORTH, RANGE 16 EAST, M.D.M.

COUNTY OF PLACER  
SCALE: 1" = 50'

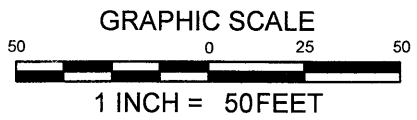
CALIFORNIA  
JULY, 2011



BOOK 14 CORNER RECORDS PAGE 70

## LEGEND

- FOUND MONUMENTS AS NOTED
- ⊙ FOUND 5/8" REBAR W/2" ALUM. CAP, LS5886 PER 13/RS/43
- NOTHING FOUND, NOTHING SET
- ⊗ SET 5/8" REBAR CAPPED STAMPED LS 6819



ALL DIMENSIONS ARE PER C/MAPS/12 AND 13/RS/43  
NO MATERIAL DISCREPANCY WAS FOUND PER SAID MAP