

CORNER RECORD

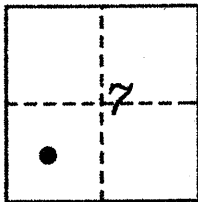
COUNTY OF PLACER, CALIFORNIA

City of \_\_\_\_\_

Document Number 20110038

Brief Legal Description

LOT 116, CHAMBERLANDS UNIT C G MAPS 5



T.14N.,R.17E.  
M.D.B.& M.

CORNER TYPE

COORDINATES  
(Optional)

Government Corner  Control   
 Meander  Property   
 Rancho  Other   
 Date of Survey JULY 2011

N. \_\_\_\_\_  
 E. \_\_\_\_\_  
 Zone \_\_\_\_\_ Datum \_\_\_\_\_  
 Elev. \_\_\_\_\_

Corner- Left as found  Found and tagged  Established  Reestablished  Rebuilt

Identification and type of corner found: Evidence used to identify or procedure used to establish or reestablish corner:

● ~ fd. monument as indicated

REESTABLISHED N.E. COR AT ORIGINAL POSITION. (SEE NOTE ON MAP.)

SET S.E.COR. AT PRORATED POSITION FROM  
 SOUTH R.O.W. HOLDING SUBDIVISION BOUNDARY  
 FOR F MAPS 48 (SENIOR)

A description of the physical condition of the monument as found and as set or reset:

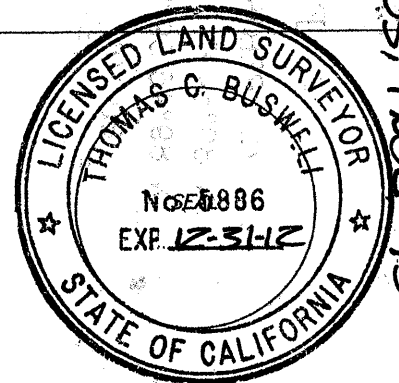
∅ ~ set 5/8" rebar with 2" aluminum cap  
 stamped "TAHOE BASIN LAND SURVEYING,  
 THOMAS C. BUSWELL, LS 5886".

SURVEYOR'S STATEMENT

This Corner Record was prepared by me or under my direction in conformance with the Land

Surveyor's Act on JULY 29 20 11

Signed Thomas C. Buswell, PLS L.S. or R.C.E. Number 5886



COUNTY SURVEYOR'S STATEMENT

This Corner Record was Received \_\_\_\_\_ 20 \_\_\_\_\_ and Examined

and filed NOVEMBER 9<sup>TH</sup> 2011

Signed Leslie Amsberry Title Deputy County Surveyor



County Surveyor's Comment \_\_\_\_\_

BOOK 14, CHAMBERLANDS RECORDS, PAGE 75

64 F Maps 48

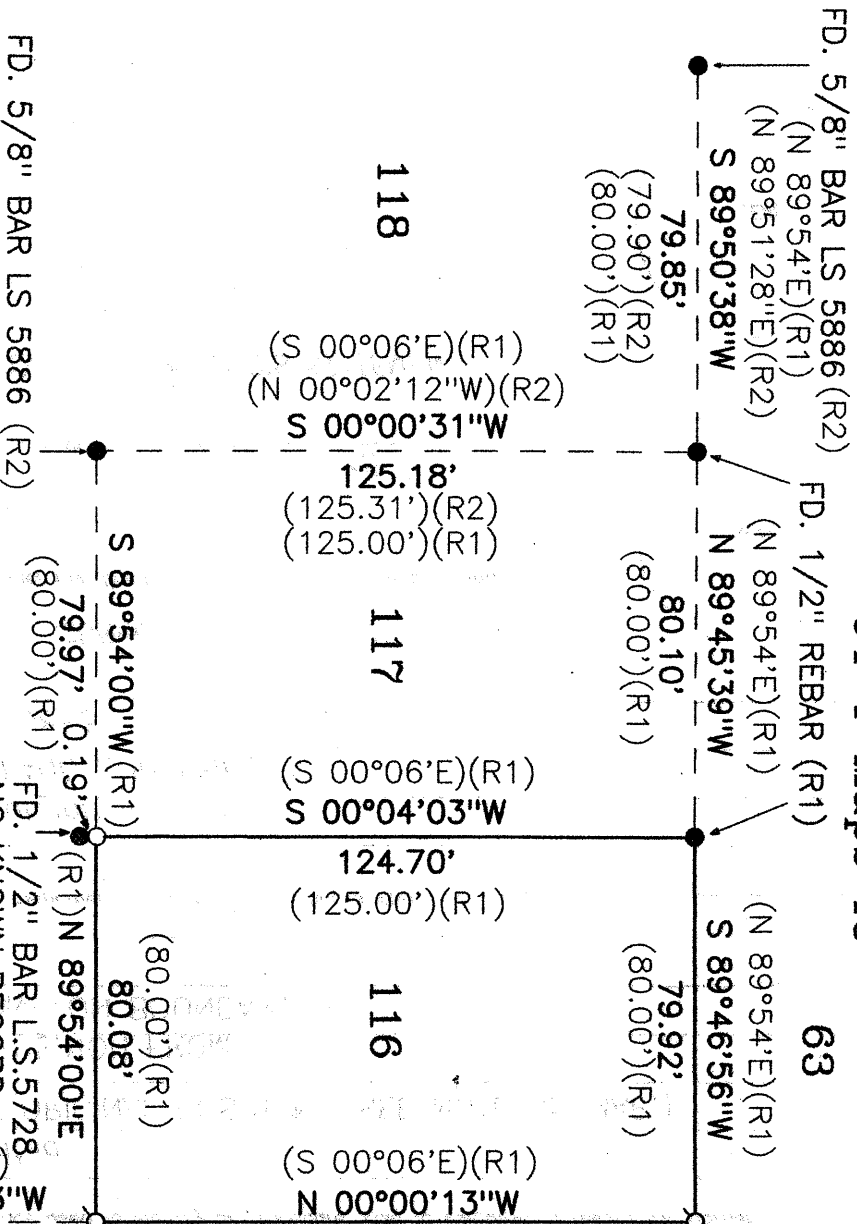
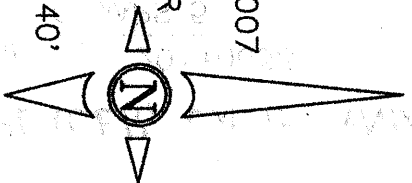
63

62

N.A.P.O.T.S.  
66

RESET MONUMENT PER 2007  
SURVEY IN IT'S ORIGINAL  
POSITION FD. 1/2" REBAR  
(3/4" IRON PIN)(R1)

SCALE 1" = 40'



**Legend**

- ~ DIMENSION POINT ONLY, NOTHING FOUND OR SET.
- ∅ ~ SET 5/8" REBAR, L.S.5886
- (R1) ~ G MAPS 5
- (R2) ~ 4 COR.REC.65
- ~ FD. MONUMENT AS INDICATED
- (C) ~ CALCULATED

FD. 5/8" REBAR  
L.S.5802  
NO KNOWN RECORD

N 89°54'00"E (R1)  
99.74'  
(100.00')(R1)

65.00' (R1) (F MAPS 48)  
164.74' ● FD. 1/2" REBAR  
(165.00')(C)(R1) (3/4" IRON PIN)(R1)

Chamberland Drive

FD. 1/2" BAR L.S.5728  
NO KNOWN RECORD

9L 398D 1508P02U 2A7M00 'Y1 7008