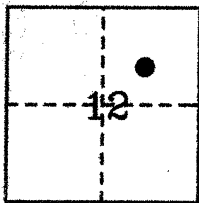


CORNER RECORD

COUNTY OF PLACER, CALIFORNIA

City of _____ Document Number 20110048

Brief Legal Description LOT 45 & 46, CHAMBERLANDS ADDITION NO. 2 H MAPS 6



T.14N, R.16E,
M.D.B.& M.

CORNER TYPE

COORDINATES
(Optional)

Government Corner Control
Meander Property
Rancho Other
Date of Survey SEPTEMBER 2011

N. _____
E. _____
Zone _____ Datum _____
Elev. _____

Corner- Left as found Found and tagged Established Reestablished Rebuilt

Identification and type of corner found: Evidence used to identify or procedure used to establish or reestablish corner:

● ~ fd. monument as indicated

SET SW COR LOT 46 BY REPLACING BENT 1/2" BAR

FOUND AT RECORD POSITION. SET NW CORNER HOLDING RECORD POSITION.

SET N.E. & S.E. PROP LINE MONUMENTS AT RECORD POSITION FOR LOT 45.

HELD FD. WESTERLY CORNER & FOUND CORNERS EASTERLY R.O.W. SACRAMENTO AVE.

A description of the physical condition of the monument as found and as set or reset:

∅ ~ set 5/8" rebar with 2" aluminum cap stamped "TAHOE BASIN LAND SURVEYING, THOMAS C. BUSWELL, LS 5886". AT CALCULATED RECORD POSITIONS.

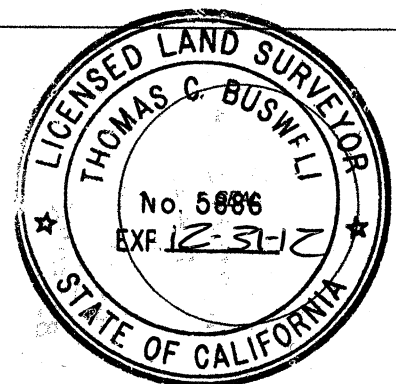
SURVEYOR'S STATEMENT

This Corner Record was prepared by me or under my direction in conformance with the Land

Surveyor's Act on SEPTEMBER 2011

Signed [Signature] L.S. or R.C.E. Number 5886

THOMAS C. BUSWELL, L.S. 5886



COUNTY SURVEYOR'S STATEMENT

This Corner Record was Received _____ 20 _____ and Examined

and filed FEBRUARY 16 2012

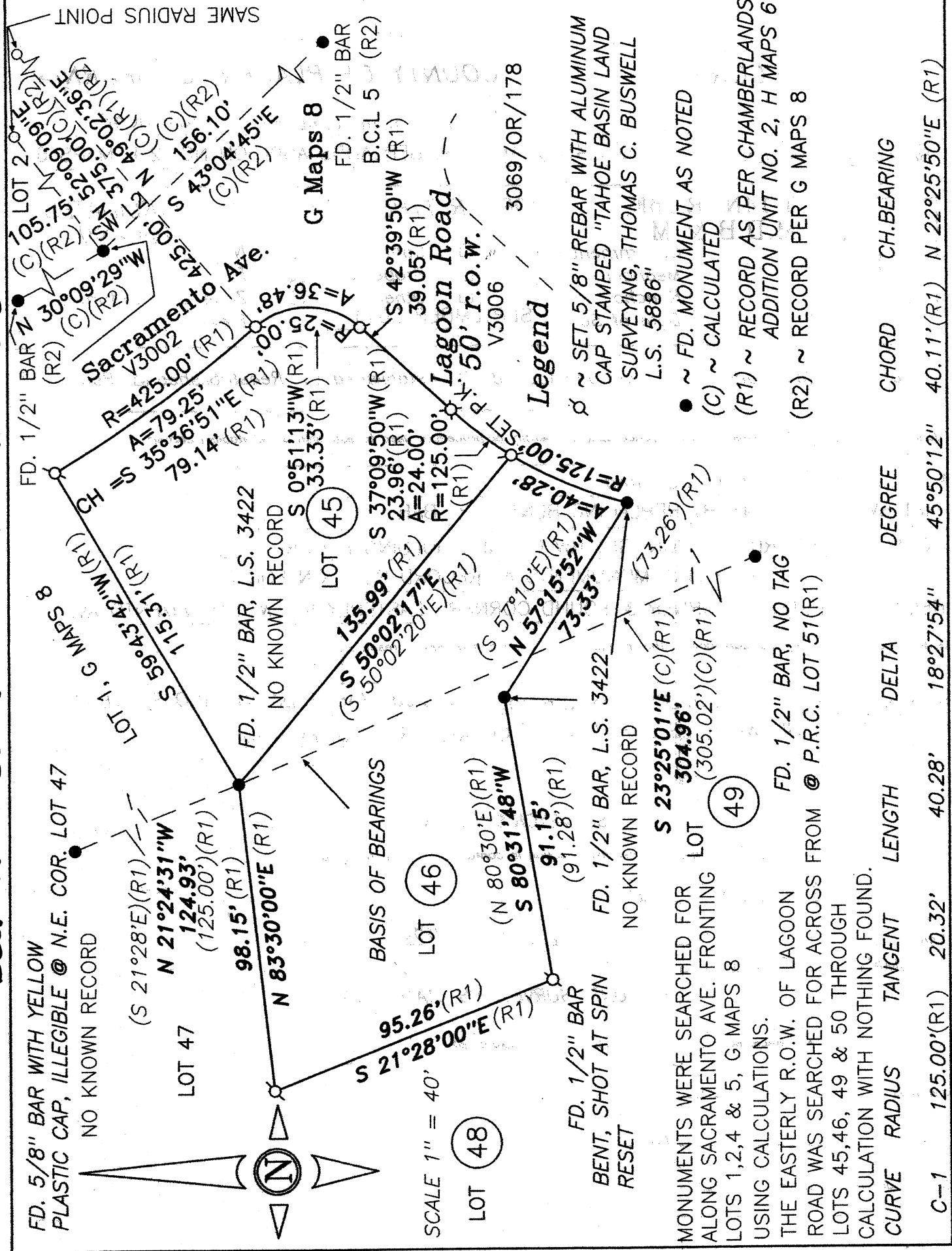
Signed [Signature] Title Deputy County Surveyor

County Surveyor's Comment _____



BOOK 14, CORNER RECORDS, PAGE 80

BOOK #4 OF COLLIER RECORDS, PAGE 80



| CURVE | RADIUS | TANGENT | LENGTH | DELTA | DEGREE | CHORD | CH.BEARING |
|-------|-------------|---------|--------|-----------|-----------|------------|-------------------|
| C-1 | 125.00'(R1) | 20.32' | 40.28' | 18°27'54" | 45°50'12" | 40.11'(R1) | N 22°25'50"E (R1) |