

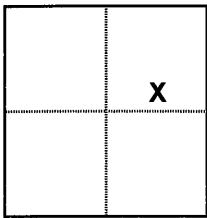
# CORNER RECORD

# COUNTY OF PLACER, CALIFORNIA

City of Unincorporated

Document Number 20120002

Brief Legal Description Lot 25 Book K Maps Page 86



S. 12  
 T. 10 N  
 R. 7 E

### CORNER TYPE

- Government Corner     Control  
 Meander                     Property  
 Rancho                         Other

Date of Survey 9/30/11 & 11/16/11

### COORDINATES

(Optional)

N. \_\_\_\_\_  
 E. \_\_\_\_\_  
 Zone \_\_\_\_\_ Datum \_\_\_\_\_  
 Elev. \_\_\_\_\_

Corner ---  Left as found     Found and tagged     Established     Reestablished     Rebuilt

Identification and type of corner found: Evidence used to identify or procedure used to establish or reestablish corner:  
 The southeast corner of Lot 25 was re-set from record data and found monuments in Sandstone Court, along with chiseled "I"'s found on the top of curb at the lot lines produced. The monuments found in Sandstone Court are not copperweld monuments, but 2" I.P.'s with screw caps set in monument wells. These appear to be the original monuments, although they are not of the same stature as on the subdivision map.

A description of the physical condition of the monument as found and as set or reset:  
 A 1/2" rebar with no tag was found lying on the ground within 1 foot of the corner position. It may have been the original corner and possibly pulled during landscape removal. The corner was re-set with a 5/8" rebar and plastic cap L.S. 6376.

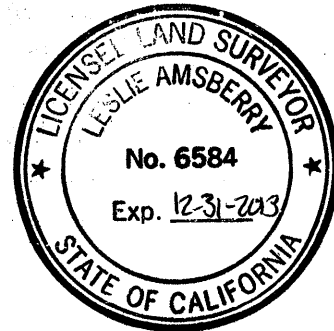
### SURVEYOR'S STATEMENT

This Corner Record was prepared by me or under my direction  
 in conformance with the Professional Land Surveyors' Act  
 on January 9, 20 12  
 Signed Richard A. Marino  
 L.S. or R.C.E. Number 6376                    Expiration Date \_\_\_\_\_



### COUNTY SURVEYOR'S STATEMENT

This Corner Record was received \_\_\_\_\_ 20\_\_\_\_  
 and examined and filed April 23 20 12  
 Signed Leslie Amsherry Title Deputy County Surveyor  
 L.S. or R.C.E. Number 6584                    Expiration Date 12-31-2013



County Surveyor's Comment \_\_\_\_\_  
 \_\_\_\_\_  
 \_\_\_\_\_

BOOK 15 CORNER RECORDS PAGE 9

**LEGEND:**

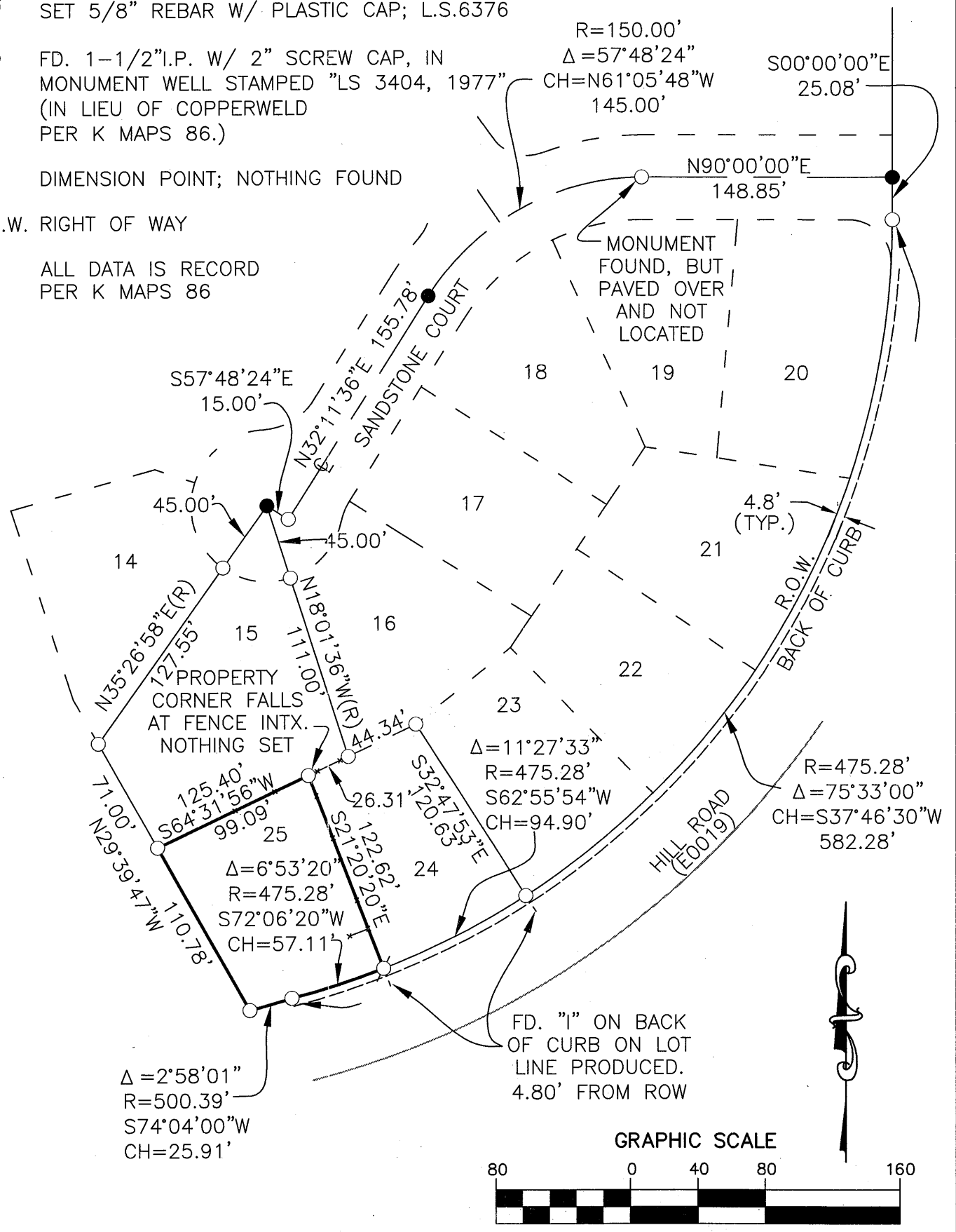
○ SET 5/8" REBAR W/ PLASTIC CAP; L.S.6376

● FD. 1-1/2" I.P. W/ 2" SCREW CAP, IN MONUMENT WELL STAMPED "LS 3404, 1977" (IN LIEU OF COPPERWELD PER K MAPS 86.)

○ DIMENSION POINT; NOTHING FOUND

R.O.W. RIGHT OF WAY

ALL DATA IS RECORD PER K MAPS 86



BOOK 15 CORNER RECORDS PAGE 9

