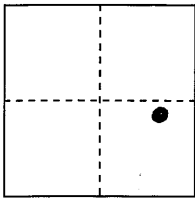


CORNER RECORD

COUNTY OF PLACER, CALIFORNIA

City of UNINCORPORATED AREA Document Number PLACER/20120014

Brief Legal Description LOT 8 BLOCK "O" SQUAW VALLEY ESTATES SUBDIVISION No. 3  
BOOK "E" OF MAPS PAGE 93 P.C.R.



S. 29

CORNER TYPE

COORDINATES

T. 16 N.

Government Corner

Control

N. \_\_\_\_\_

R. 16 E.

Meander

Property

E. \_\_\_\_\_

M.D.M.

Rancho

Other

Zone \_\_\_\_\_ Datum \_\_\_\_\_

Date of Survey 10/13/11

Elev. \_\_\_\_\_

Corner--- Left as found  Found and tagged  Established  Reestablished  Rebuilt

Identification and type of corner found: Evidence used to identify or procedure used to establish or reestablish corner:

● = FOUND 5/8" REBAR W/ PLASTIC CAP L.S. 5851

● = FOUND 3/4" REBAR W/ COPPER COLLAR L.S. 7954

● = FOUND 3/4" IRON PIPE W/ PLASTIC PLUG L.S. 5549 PER BK 2 CP 166

▲ = FOUND 1/2" REBAR W/ PLASTIC CAP L.S. 5802

A description of the physical condition of the monument as found and as set or reset:

■ = FOUND 1/2" IRON PIPE W/ METAL CAP

⊗ = SET BATHEY MONUMENT (T-BAR) W/ NAIL & TAG L.S. 5549

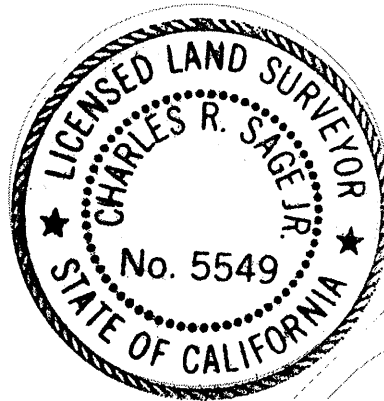
JN: 11059

SURVEYOR'S STATEMENT

This Corner Record was prepared by me or under my direction in conformance with the Professional Land Surveyors' Act on OCTOBER 17, 2011.

Signed Charles R. Sage Jr.

L.S. or R.C.E. Number 5549 Expiration Date 6/30/13



COUNTY SURVEYOR'S STATEMENT

This Corner Record was received \_\_\_\_\_ 20\_\_

and examined and filed March 28, 2012 20\_\_

Signed Leslie Ambery Title Deputy County Surveyor

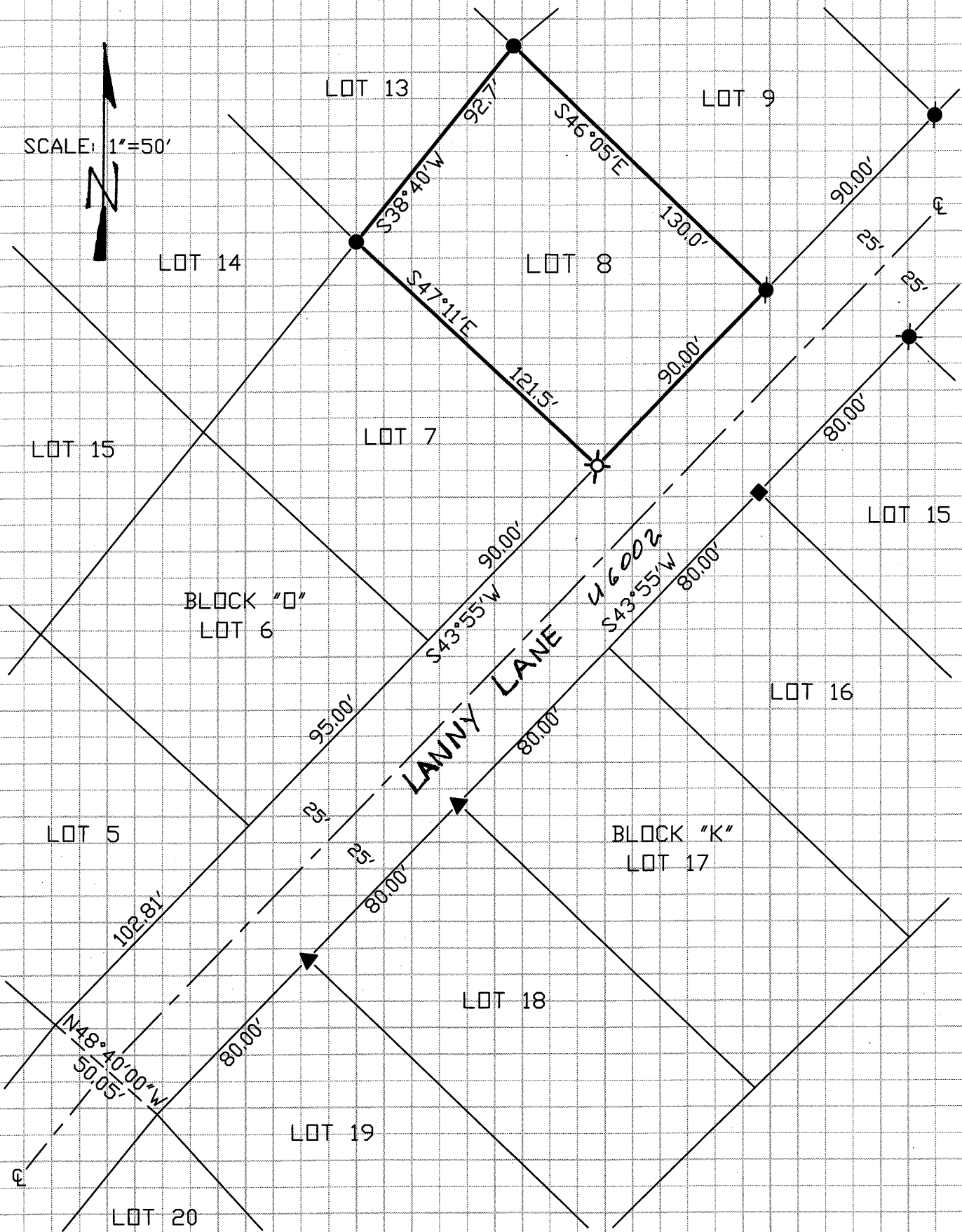
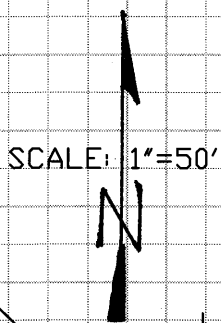
L.S. or R.C.E. Number 6584 Expiration Date 12-31-13



County Surveyor's Comment \_\_\_\_\_

BOOK 15 CORNER RECORDS PAGE 14

NOTE: THE BEARINGS AND DISTANCES SHOWN ARE RECORD PER E/MOR/93 P.C.R.  
 NO MATERIAL DISCREPANCIES WITH RECORD INFORMATION WERE FOUND.



BOOK 15 CORNER RECORDS PAGE 14