

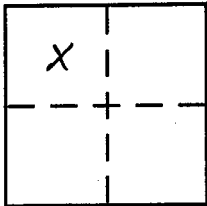
**CORNER RECORD**

Document Number 2020047

City of COLFAX

County of PLACER, California

Brief Legal Description PARCEL "D" BOOK 12 PARCEL MAPS PAGE 141



SEC 34  
T15N  
R9E

**CORNER TYPE**

- Government Corner  Control   
 Meander  Property   
 Rancho  Other   
 Date of Survey \_\_\_\_\_

**COORDINATES (Optional)**

- N. \_\_\_\_\_  
 E. \_\_\_\_\_  
 Zone \_\_\_\_\_ NAD27  NAD83   
 NAD83 Epoch \_\_\_\_\_  
 Elev. \_\_\_\_\_  
 Vert. Datum: NGVD29  NAVD88   
 Meas. Units: Metric  Imperial

Corner - Left as found  Found and tagged  Established  Reestablished  Rebuilt

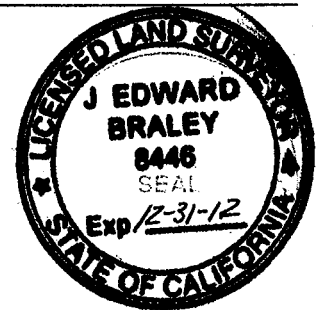
Identification and type of corner found: Evidence used to identify or procedure used to establish or reestablish the corner:  
USED FOUND CORNERS PER SKETCH TO REESTABLISH MOST NORTH WEST CORNER OF PARCEL "D" BK 12 PM Pg 141

A description of the physical condition of the monument as found and as set or reset: SET 3/4" x 24" REBAR WITH PLASTIC CAP LS 8446

**SURVEYOR'S STATEMENT**

This Corner Record was prepared by me or under my direction in conformance with the Land Surveyor's Act on 06-21-2012

Signed [Signature] P.L.S or R.C.E. No. 8446



**COUNTY SURVEYOR'S STATEMENT**

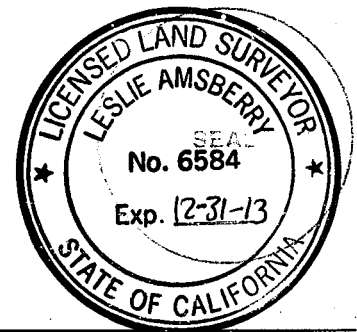
This Corner Record was received \_\_\_\_\_

and examined and filed August 2, 2012

Signed [Signature] P.L.S or R.C.E. No. 6584

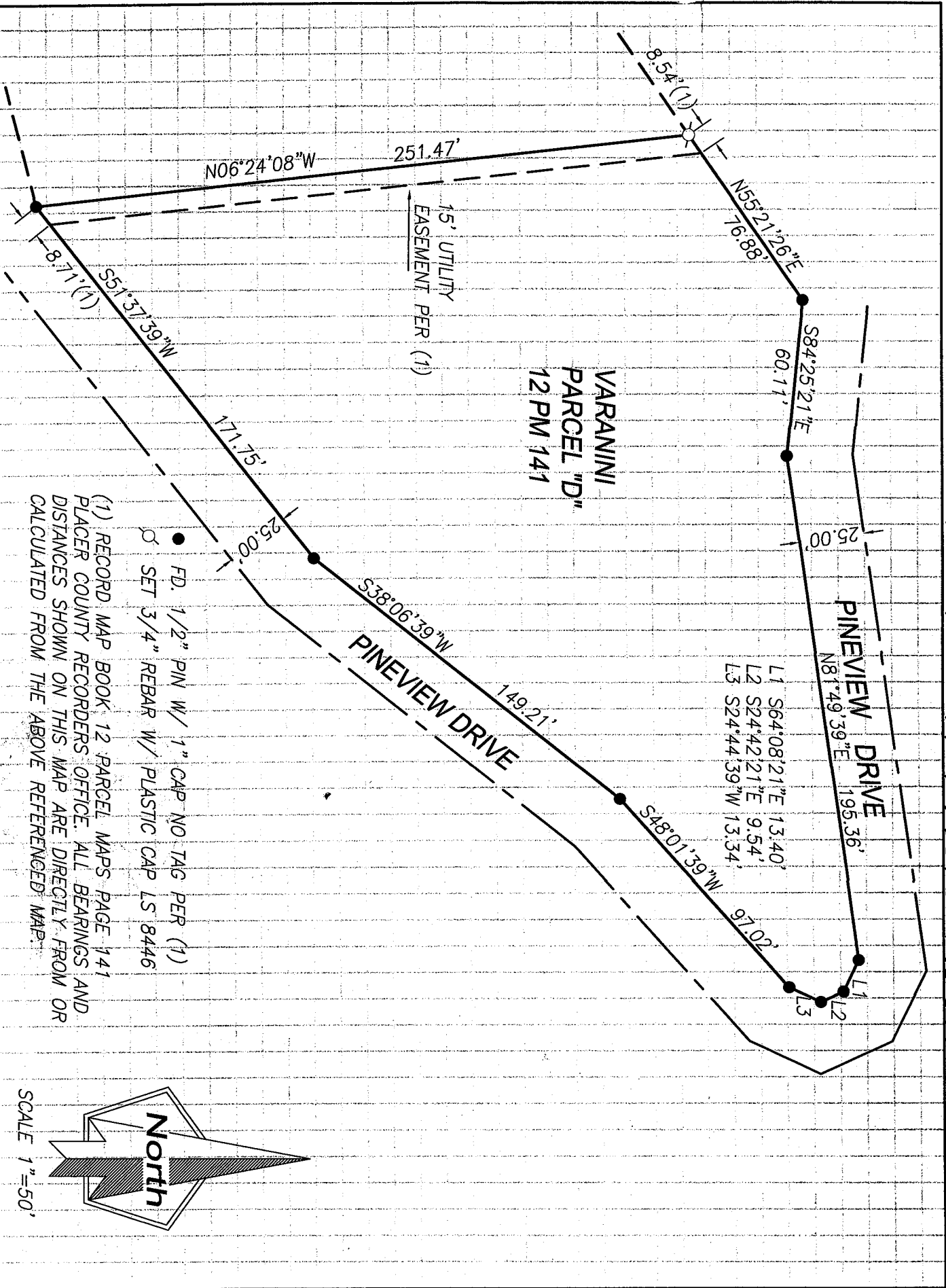
Title Deputy County Surveyor

County Surveyor's Comment \_\_\_\_\_



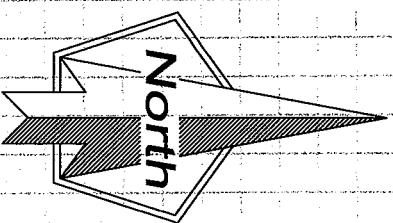
BOOK 15 CORNER RECORDS PAGE 41

BOOK 15 CORNER RECORDS PAGE 41



(1) RECORD MAP BOOK 12 PARCEL MAPS PAGE 141  
 PLACER COUNTY RECORDERS OFFICE. ALL BEARINGS AND  
 DISTANCES SHOWN ON THIS MAP ARE DIRECTLY FROM OR  
 CALCULATED FROM THE ABOVE REFERENCED MAP.

- FD. 1/2" PIN W/ 1" CAP NO TAG PER (1)
- SET 3/4" REBAR W/ PLASTIC CAP LS 8446



SCALE 1"=50'