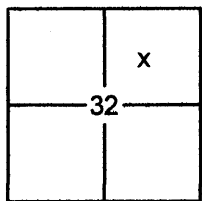


City of \_\_\_\_\_

County of PLACER, California

Brief Legal Description LOT 4, BLOCK F, HIGHLANDS NO.3 SUBDIVISION, G/MAPS/38 O.R.P.C.



SEC. 32  
T. 16 N.  
R. 17 E.  
M.D.B. & M.

**CORNER TYPE**

- Government Corner  Control
- Meander  Property
- Rancho  Other
- Date of Survey 8/16/2012

**COORDINATES (OPTIONAL)**

- N. \_\_\_\_\_
- E. \_\_\_\_\_
- Zone \_\_\_\_\_ Datum \_\_\_\_\_
- Elev. \_\_\_\_\_
- Vert. Datum:  NGVD29  NAVD88
- Meas. Units:  Metric  Imperial

**CORNER-** Left as Found  Found and Tagged  Established  Reestablished  Rebuilt

Identification and type of corner found: Evidence used to identify or procedure used to establish or reestablish the corner:

FOUND 1/2" REBARS PER G/MAPS/38 RESET WITH 5/8" REBARS LS-7429 POST CONSTRUCTION OF WATER LINE AND FIRE HYDRANT

A description of the physical condition of the monument as found and as set or reset:

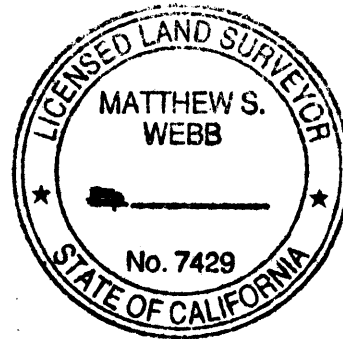
- SET 5/8" REBAR WITH YELLOW PLASTIC CAP LS-7429
- FOUND MONUMENT AS SHOWN ON PLAT

**SURVEYOR'S STATEMENT**

This Corner Record was prepared by me or under my direction in conformance with the

Land Surveyors Act on August 22, 2012

Signed Matthew S. Webb P.L.S. or R.C.E. No. 7429



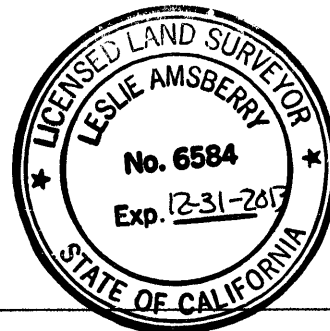
**COUNTY SURVEYOR'S STATEMENT**

This Corner Record was received \_\_\_\_\_

and examined and filed NOVEMBER 21, 2012

Signed Leslie Amsberry P.L.S. or R.C.E. No. 6584

Title DEPUTY COUNTY SURVEYOR



**COUNTY SURVEYOR'S COMMENT:**

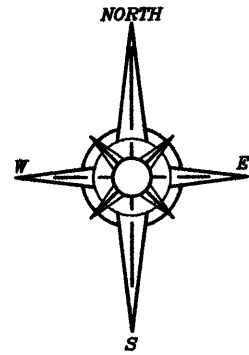
\_\_\_\_\_  
 \_\_\_\_\_  
 \_\_\_\_\_  
 \_\_\_\_\_  
 \_\_\_\_\_

BOOK 15 CORNER RECORDS PAGE 68

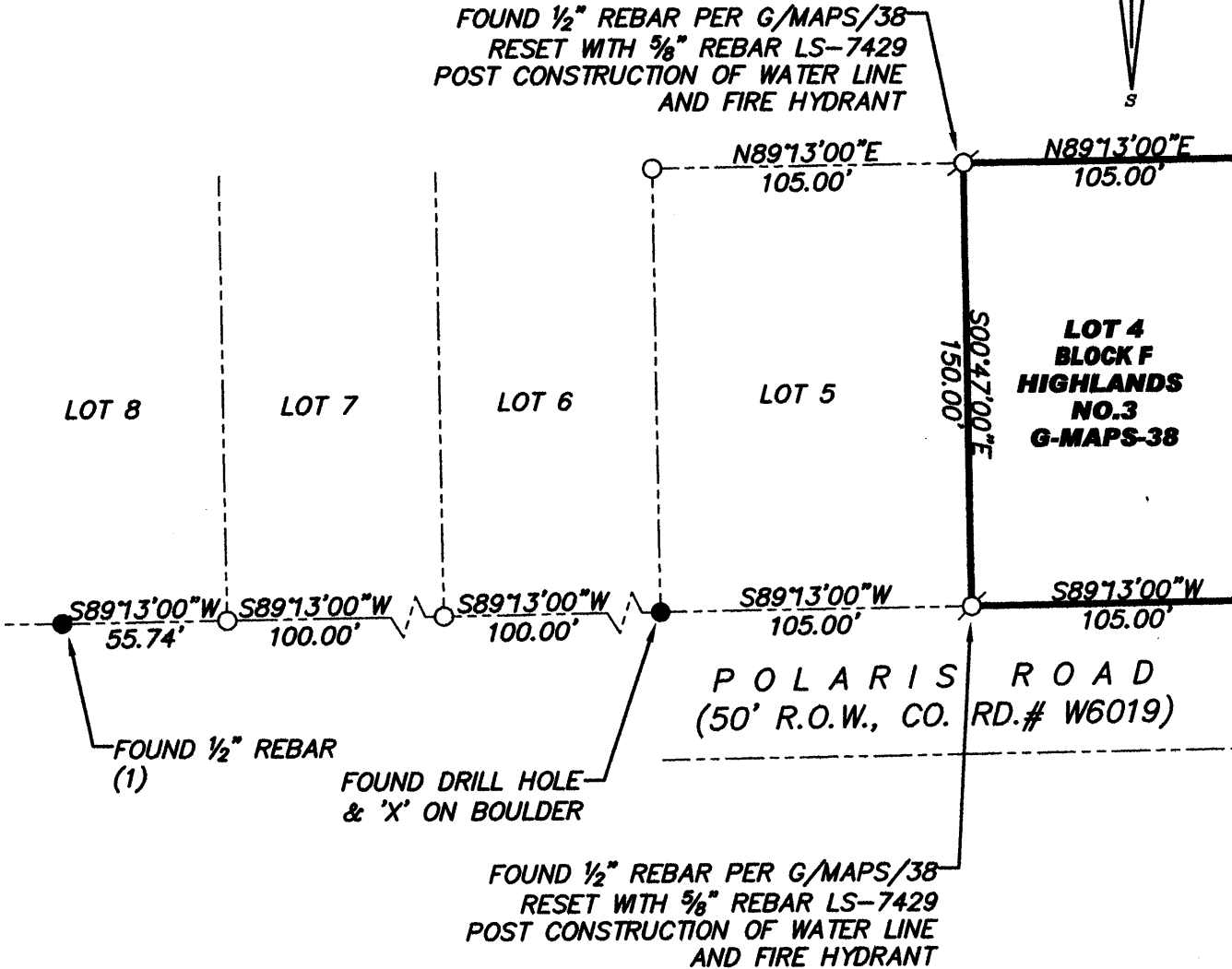
**PLAT OF SURVEY**

LOT 4, BLOCK F, HIGHLANDS NO. 3 SUBDIVISION, BOOK G OF MAPS AT PAGE 38,  
 OFFICIAL RECORDS PLACER COUNTY, CALIFORNIA. A PORTION OF SECTION 32,  
 TOWNSHIP 16 N., RANGE 17 E., M.D.B. & M.

SCALE 1" = 60' DATE OF SURVEY 8/16/2012



FOUND 1/2" REBAR PER G/MAPS/38  
 RESET WITH 5/8" REBAR LS-7429  
 POST CONSTRUCTION OF WATER LINE  
 AND FIRE HYDRANT



BH 15 CORNER RECORDS, PG 68

- FOUND MONUMENT AS SHOWN HEREON
- DIMENSION POINT (NOTHING FOUND OR SET)
- SET 5/8" REBAR WITH YELLOW PLASTIC CAP L.S. 7429 UNLESS OTHERWISE NOTED
- (1) PER G/MAPS/38

J/N 2086.00