

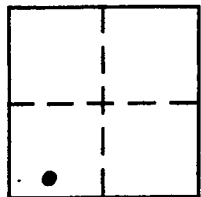
CORNER RECORD

COUNTY OF PLACER, CALIFORNIA

City of UNINCORPORATED AREA

Document Number 20140004

Brief Legal Description LOT 16 PONDEROSA PALISADES WEST  
BOOK "J" OF MAPS PAGE 49 P.C.D.R.



SEC. 15  
T. 17 N.  
R. 16 E.  
M.D.M.

CORNER TYPE

Government Corner  Control   
Meander  Property   
Rancho  Other   
Date of Survey 7/24/13

COORDINATES (Optional)

N. \_\_\_\_\_  
E. \_\_\_\_\_  
Zone \_\_\_\_\_ Datum \_\_\_\_\_  
Elev. \_\_\_\_\_

Corner — Left as found  Found and tagged  Established  Reestablished  Rebuilt

Identification and type of corner found: Evidence used to identify or procedure used to establish or reestablish corner:

- = FOUND 5/8" REBAR w/ TAG WIRED, L.S. 3332, BELIEVE TO BE ORIGINAL (1/2" IRON PIN) PER "J"/MAPS/49 P.C.D.R.
- = FOUND 3/4" IRON PIPE PER "J"/MAPS/49 P.C.D.R., NO TAG
- ✕ = FOUND 5/8" REBAR w/ PLASTIC CAP, L.S. 3337
- ✕ = FOUND CHISEL CROSS ON ROCK, PER BK. 10 C.R. PAGE 68

A description of the physical condition of the monument as found and as set or reset:

○ = SET BATHEY MONUMENT (T-BAR) w/ NAIL TAG P.L.S. 8628

JN: 13048

SURVEYOR'S STATEMENT

This Corner Record was prepared by me or under my direction in conformance with the Land

Surveyors' Act on AUGUST 1, 2013.

Signed [Signature] L.S. or R.C.E. Number 8628  
LIC. EXPIRES 12/31/15

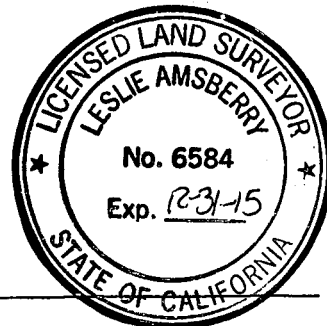


COUNTY SURVEYOR'S STATEMENT

This Corner Record was received \_\_\_\_\_ 20 \_\_\_\_\_ and examined

and filed February 6 2014.

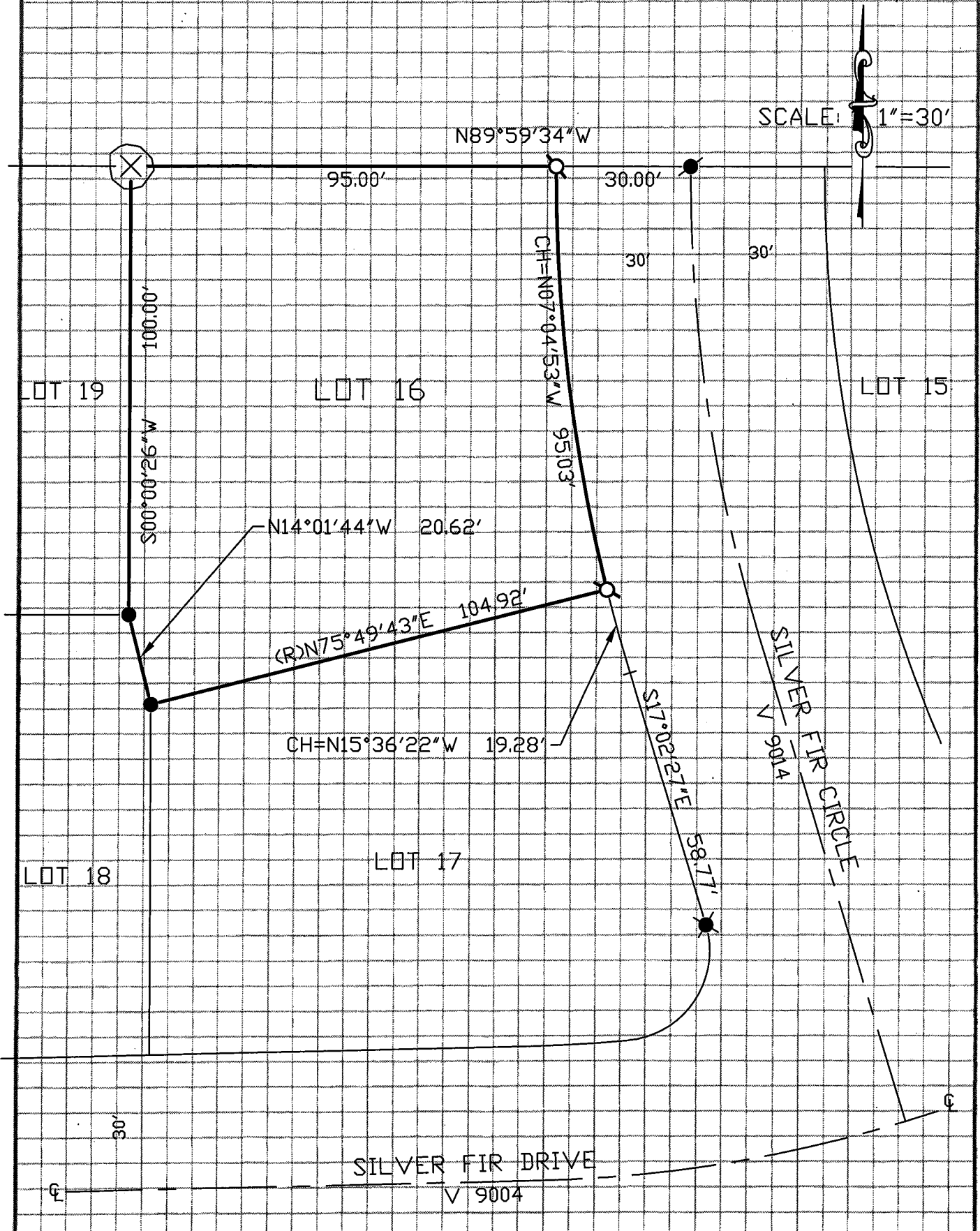
Signed [Signature] Title County Surveyor



County Surveyor's Comment \_\_\_\_\_

BOOK 16 CORNER RECORDS PAGE 82

NOTE: THE BEARINGS AND DISTANCE SHOWN ARE RECORD PER J/MAPS/49 P.C.D.R.  
 NO MATERIAL DISCREPANCIES WITH RECORD INFORMATION WERE FOUND.



BOOK 16 CORNER RECORDS PAGE 82