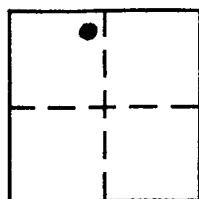


CORNER RECORD

COUNTY OF PLACER, CALIFORNIA

City of UNINCORPORATED AREA Document Number 20140006

Brief Legal Description LOT 21 ALPINE MEADOWS ESTATES UNIT # 11  
BOOK "J" OF MAPS PAGE 51 O.R.P.C.



SEC. 4  
T. 15 N.  
R. 16 E.  
M. D. M

CORNER TYPE

Government Corner  Control   
Meander  Property   
Rancho  Other   
Date of Survey 8/15/13

COORDINATES  
(Optional)

N. \_\_\_\_\_  
E. \_\_\_\_\_  
Zone \_\_\_\_\_ Datum \_\_\_\_\_  
Elev. \_\_\_\_\_

Corner — Left as found  Found and tagged  Established  Reestablished  Rebuilt

Identification and type of corner found: Evidence used to identify or procedure used to establish or reestablish corner:

- = FOUND 1/2" REBAR W/ PLASTIC CAP R.E.E. 18629, NO RECORD
- = FOUND 3/4" REBAR W/ WIRE & TAG R.C.E. 18629, NO RECORD
- = FOUND 5/8" REBAR W/ PLASTIC CAP L.S. 6393, NO RECORD
- ▲ = FOUND 1" IRON PIPE W/ PLASTIC PLUG L.S. 5549, NO RECORD
- = FOUND 5/8" REBAR W/ PLASTIC CAP L.S. 7429 PER BK. 16 C.R. PAGE 3

A description of the physical condition of the monument as found and as set or reset:

- = SET BATHEY MONUMENT (T-BAR) W/ NAIL & TAG P.L.S. 8628
- ⊗ = SET MAG NAIL W/ WASHER P.L.S. 8628

JN: 13051

SURVEYOR'S STATEMENT

This Corner Record was prepared by me or under my direction in conformance with the Land

Surveyors' Act on DECEMBER 12 2013.

Signed [Signature] (L.S.) or R.C.E. Number 8628  
LIC. EXPIRES 12/31/15

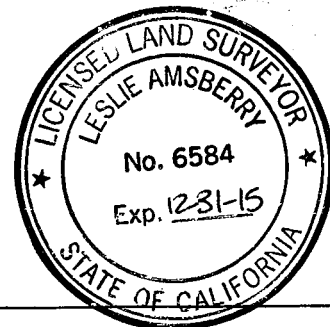


COUNTY SURVEYOR'S STATEMENT

This Corner Record was received \_\_\_\_\_ 20 \_\_\_\_ and examined

and filed FEBRUARY 6, 2014 20 \_\_\_\_.

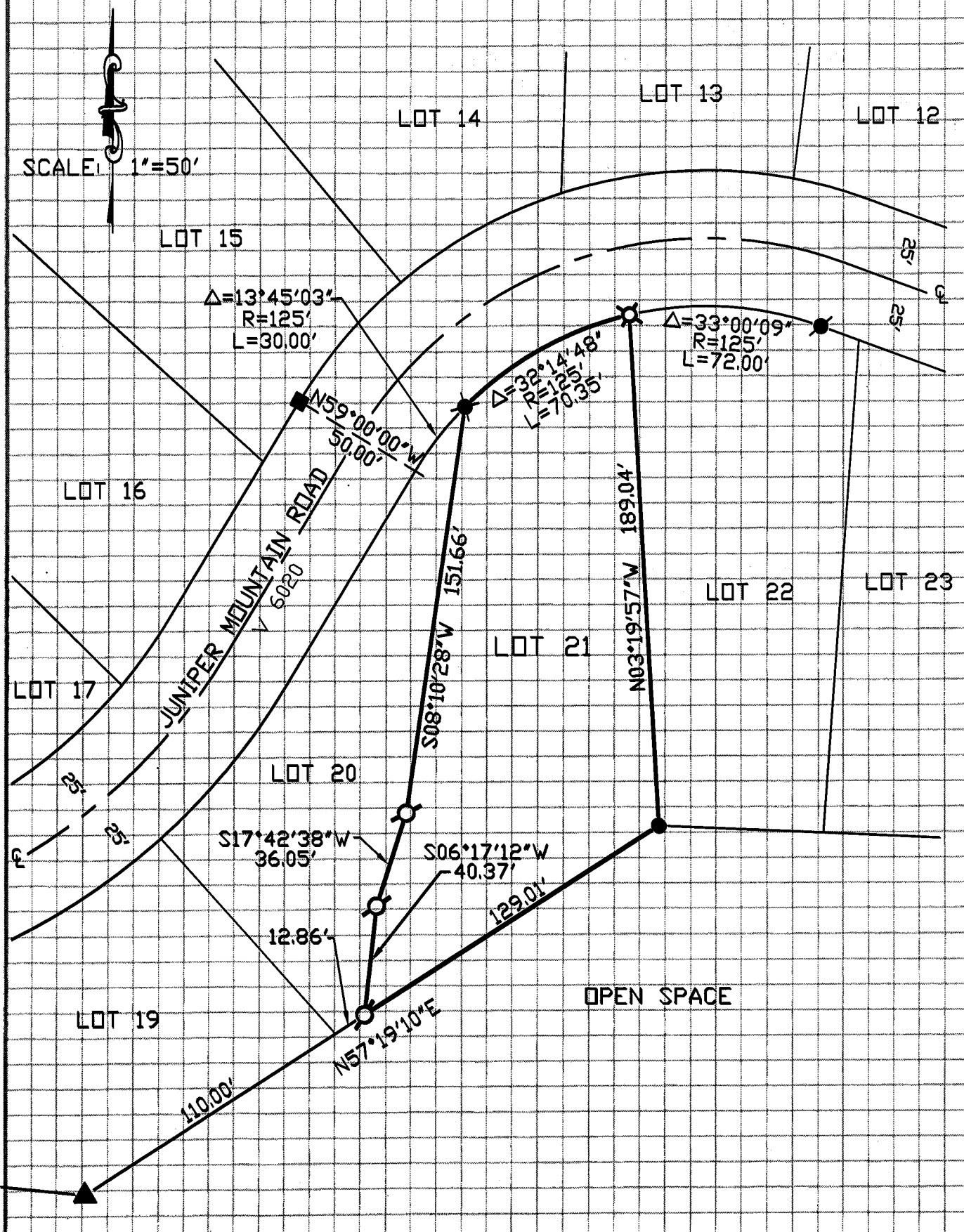
Signed [Signature] Title County Surveyor



County Surveyor's Comment \_\_\_\_\_

BOOK 16 CORNER RECORDS PAGE 84

NOTE: THE BEARINGS AND DISTANCES SHOWN ARE RECORD PER J/MAPS/51 P.C.D.R.  
 NO MATERIAL DISCREPANCIES WITH RECORD INFORMATION WERE FOUND.



BOOK 16 CORNER RECORDS PAGE 84