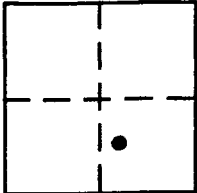


CORNER RECORD

COUNTY OF PLACER, CALIFORNIA

City of UNINCORPORATED AREA Document Number 20100055

Brief Legal Description LOT 12 THE OVERLOOK AT NORTHSTAR
BOOK "X" OF MAPS PAGE 81 P.C.O.R



SEC. 31
T. 17 N.
R. 17 E.
M.D.M.

CORNER TYPE

Government Corner Control
Meander Property
Rancho Other
Date of Survey 10/28/10

COORDINATES (Optional)

N. _____
E. _____
Zone _____ Datum _____
Elev. _____

Corner — Left as found Found and tagged Established Reestablished Rebuilt

Identification and type of corner found: Evidence used to identify or procedure used to establish or reestablish corner:

● = FOUND 5/8" REBAR W/ PLASTIC CAP L.S. 3422

A description of the physical condition of the monument as found and as set or reset:

⊕ = SET BATHEY MONUMENT (T-BAR) W/ NAIL TAG L.S. 5549

JN: 10078

SURVEYOR'S STATEMENT

This Corner Record was prepared by me or under my direction in conformance with the Land

Surveyors' Act on 11/2/10 2010.

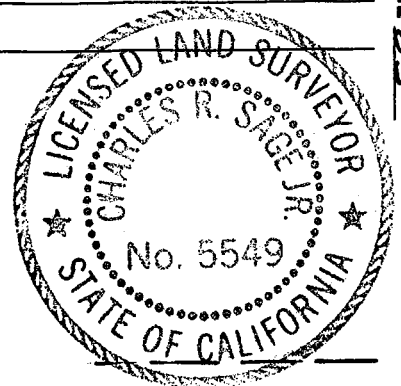
Signed [Signature] L.S. or R.C.E. Number 5549
EXP 6/30/11

COUNTY SURVEYOR'S STATEMENT

This Corner Record was received _____ 20 _____ and examined

and filed MARCH 7, 2014 20 _____.

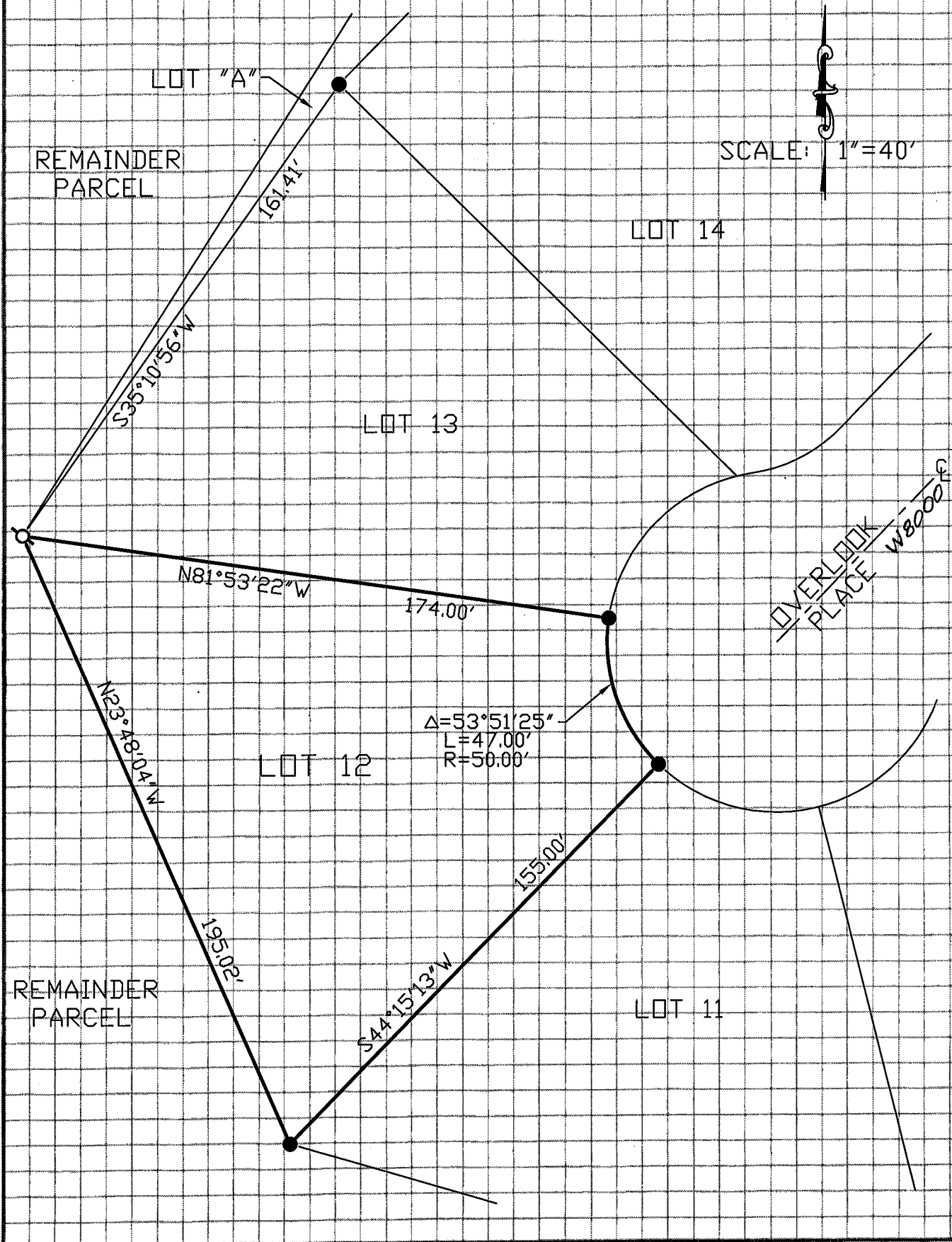
Signed [Signature] Title County Surveyor



County Surveyor's Comment _____

BOOK 16 CORNER RECORDS PAGE 85

NOTE: THE BEARINGS AND DISTANCES SHOWN ARE RECORD PER X/MOR/81 P.C.R.
 NO MATERIAL DISCREPANCIES WITH RECORD INFORMATION WERE FOUND.



BOOK 16 CORNER RECORDS PAGE 85