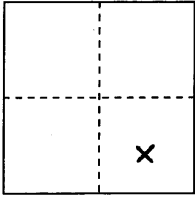


# CORNER RECORD

# COUNTY OF PLACER, CALIFORNIA

City of UNINCORPORATED TERRITORY Document Number 20120092

Brief Legal Description LOT 41, KINGSWOOD ESTATES NO. 1, I/MAPS/II, P.C.R.



**S.**  
**T. T.16 N.,**  
**R.17 E.,**  
**R. M.D.M.**

### CORNER TYPE

Government Corner  Control   
 Meander  Property   
 Rancho  Other   
 Date of Survey 12/14/12

### COORDINATES

(Optional)  
 N. \_\_\_\_\_  
 E. \_\_\_\_\_  
 Zone \_\_\_\_\_ Datum \_\_\_\_\_  
 Elev. \_\_\_\_\_

Corner--- Left as found  Found and tagged  Established  Reestablished  Rebuilt

Identification and type of corner found: Evidence used to identify or procedure used to establish or reestablish corner:

● - FOUND MONUMENT AS SHOWN HEREON

USED FOUND MONUMENTS PER I/MAPS/II TO RESET CORNERS OF LOT 41 IN RECORD POSITION

A description of the physical condition of the monument as found and as set or reset: \_\_\_\_\_

Ø - SET 5/8" REBAR W/CAP STAMPED PLS 5851

## SURVEYOR'S STATEMENT

This Corner Record was prepared by me or under my direction in conformance with the Professional Land Surveyors' Act on DECEMBER 12, 2012.

Signed [Signature]

L.S. or R.C.E. Number 5851 Expiration Date 12/31/12



## COUNTY SURVEYOR'S STATEMENT

This Corner Record was received \_\_\_\_\_ 20\_\_\_\_

and examined and filed FEBRUARY 15, 2013 20\_\_\_\_

Signed [Signature] Title DEPUTY COUNTY SURVEYOR

L.S. or R.C.E. Number 6584 Expiration Date 12-31-2013



County Surveyor's Comment \_\_\_\_\_  
 \_\_\_\_\_  
 \_\_\_\_\_

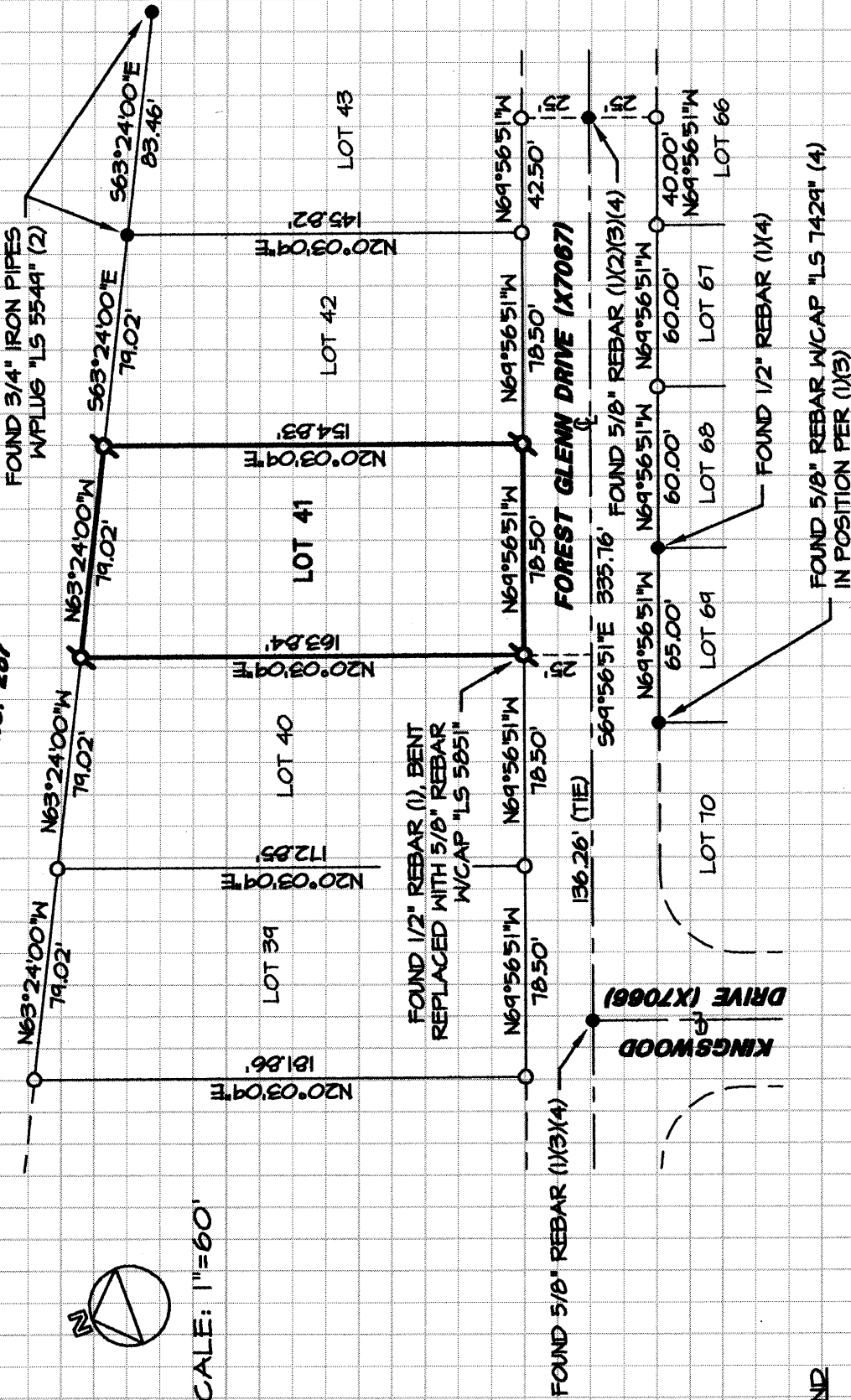
BOOK 16 CORNER RECORDS PAGE 7

DATE: 12/14/12  
JOB: 12-12-02

STATE HIGHWAY NO. 287

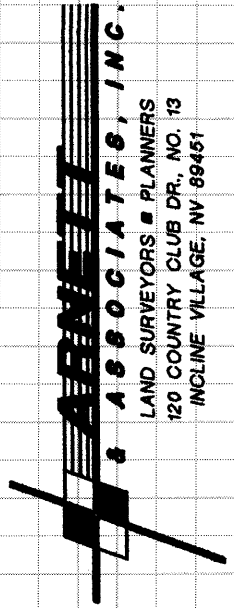


SCALE: 1"=60'



**LEGEND**

- FOUND MONUMENT AS SHOWN HEREON
- ⊕ SET 5/8" REBAR W/CAP "PLS 5051"
- RECORD DIMENSION POINT - NOTHING FOUND OR SET
- (1) PER 1/MAPS/11
- (2) PER 3/CR/30
- (3) PER 3/CR/127
- (4) PER 15/CR/76



**ABERNETHY & ASSOCIATES, INC.**  
LAND SURVEYORS & PLANNERS  
120 COUNTRY CLUB DR., NO. 13  
INCLINE VILLAGE, NV 89451