

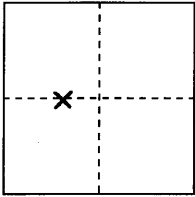
CORNER RECORD

COUNTY OF PLACER, CALIFORNIA

City of UNINCORPORATED TERRITORY

Document Number 20130041

Brief Legal Description LOT 17 & 18, BLOCK "WX", BROCKWAY VISTA, D/MAPS/16, P.C.R. # 21/SURVEYS/195



S.

T SEC 19,
T.16 N.,
R.18 E.,
R.M.D.M.

CORNER TYPE

Government Corner
Meander
Rancho
Date of Survey 3/28/12

Control
Property
Other

COORDINATES

(Optional)

N. _____
E. _____
Zone _____ Datum _____
Elev. _____

Corner--- Left as found Found and tagged Established Reestablished Rebuilt

Identification and type of corner found: Evidence used to identify or procedure used to establish or reestablish corner:

● FOUND 5/8" REBAR W/CAP, "PLS 6508", UNLESS OTHERWISE NOTED

USED FOUND MONUMENTS PER 21/SURVEYS/195 TO RESET CORNERS IN RECORD POSITION

A description of the physical condition of the monument as found and as set or reset:

♂ - SET 5/8" REBAR W/CAP STAMPED PLS 5851

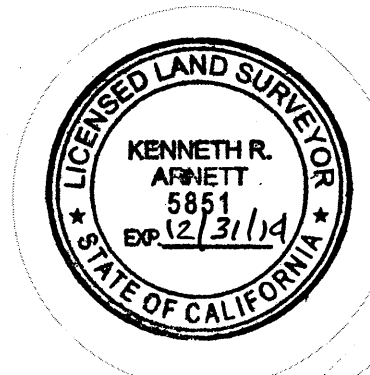
SURVEYOR'S STATEMENT

This Corner Record was prepared by me or under my direction in conformance with the Professional Land Surveyors' Act

on MARCH 29, 2013

Signed [Signature]

L.S. or R.C.E. Number 5851 Expiration Date 12/31/14



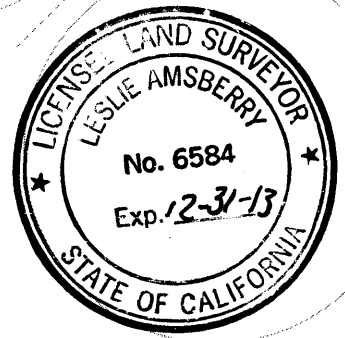
COUNTY SURVEYOR'S STATEMENT

This Corner Record was received _____ 20____

and examined and filed SEPTEMBER 16 2013

Signed Leslie Amsberry Title Deputy County Surveyor

L.S. or R.C.E. Number 6584 Expiration Date _____



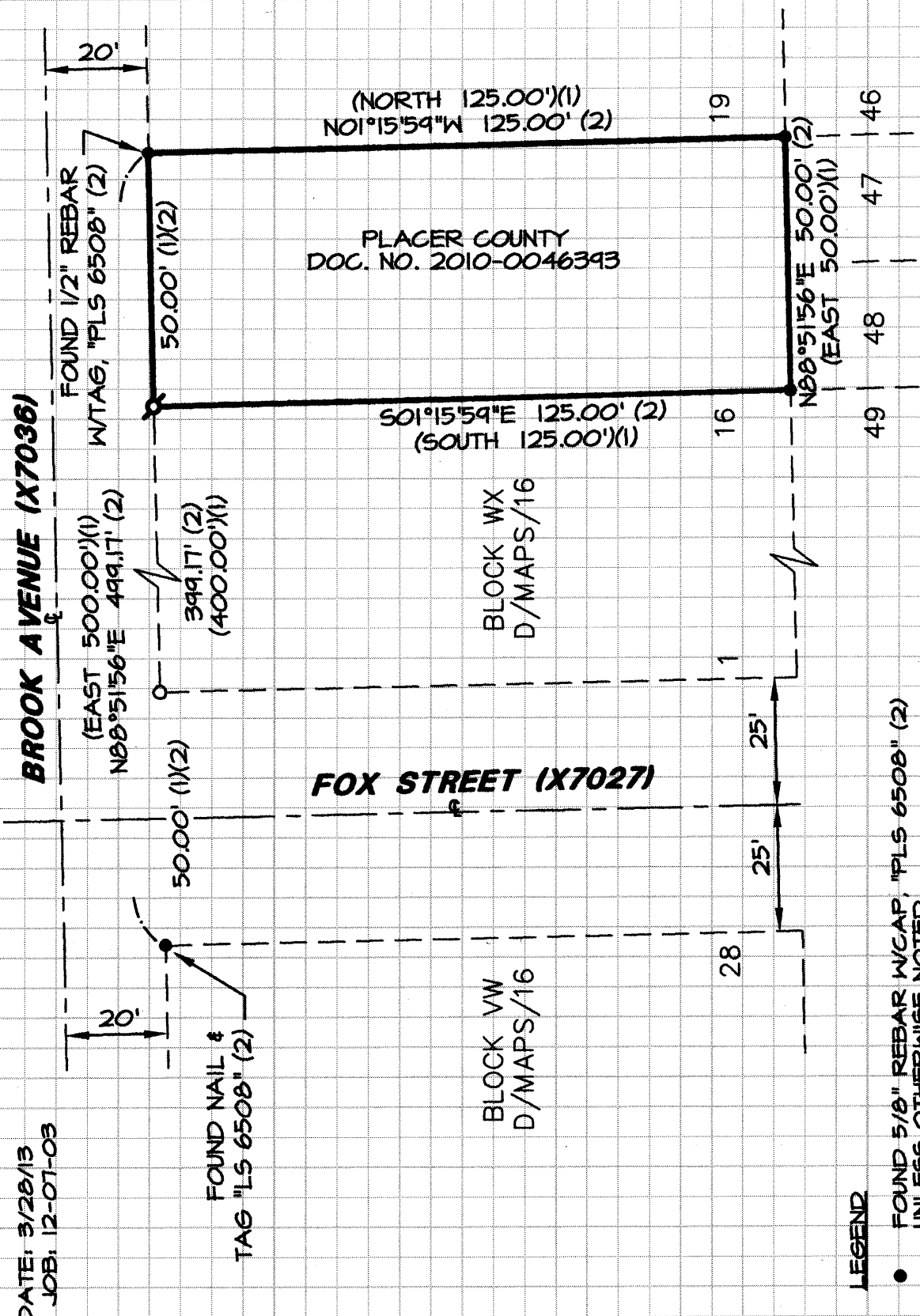
County Surveyor's Comment _____

BOOK 16 CORNER RECORDS PAGE 42

DATE: 3/28/13
JOB: 12-07-03

BROOK AVENUE (X7036)

FOX STREET (X7027)



LEGEND

- FOUND 5/8" REBAR W/CAP "PLS 6508" (2)
UNLESS OTHERWISE NOTED
- ⊕ SET 5/8" REBAR W/CAP "PLS 5851"
- RECORD DIMENSION POINT -
NOTHING FOUND OR SET
- (1) PER D/MAPS/16
- (2) PER 21/SURVEYS/95

ARMSTRONG & ASSOCIATES, INC.
LAND SURVEYORS & PLANNERS
120 COUNTRY CLUB DR., NO. 13
INCLINE VILLAGE, NV 89451