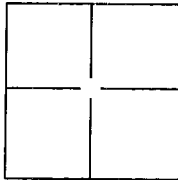


CORNER RECORD

Document Number 20120088

City of _____ County of PLACER, California
 Brief Legal Description PARCEL 2, BOOK 29 OF PARCEL MAPS, PAGE 666



**SEC 10
T.10N
R.7E**

CORNER TYPE

Government Corner Control
 Meander Property
 Rancho Other

Date of Survey OCT 24, 2012

COORDINATES(Optional)

N. _____
 E. _____
 Zone _____ NAD27 NAD83
 NAD83 Epoch _____
 Elevation _____
 Vert. Datum: NGVD29 NAV88
 Meas. Units: Metric Imperial

Corner - Left as found Found and tagged Established Reestablished Rebuilt

Identification and type of corner found: Evidence used to identify or procedure used to establish or reestablish the corner:

FND S 1/4 CORNER SEC. 10 AND RR SPK AT INTX OF Q
 ROYAL CREST CT AND S LINE SEC. 10, AS SHOWN
 ON 29PM66 FND IRON PINS AT BG, EC AND CORNERS
 OF "AREA 2" AS SHOWN ON 29PM66. FND SW CORNER
 PARCEL 2, 29PM66

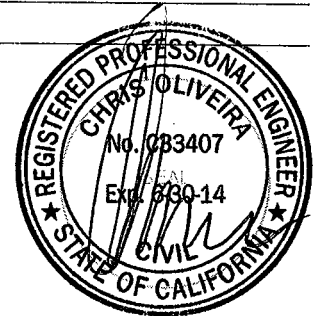
A description of the physical condition of the monument as found and as set or reset:

SET 5/8" REBAR w/ CAP STAMPED RCE 33407

SURVEYOR'S STATEMENT

This Corner Record was prepared by me or under my direction in conformance with
 the Land Surveyors Act on SEPT 19, 2013.

Signed [Signature] P.L.S. or R.C.E. Number 33407



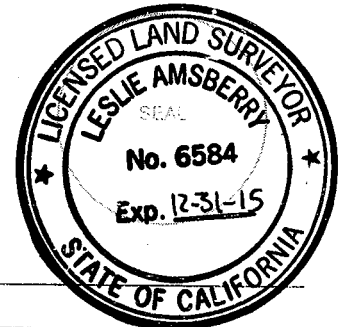
COUNTY SURVEYOR'S STATEMENT

This Corner Record was received _____ and examined
 and filed NOVEMBER 21, 2013.

Signed [Signature] P.L.S. or R.C.E. Number 6584

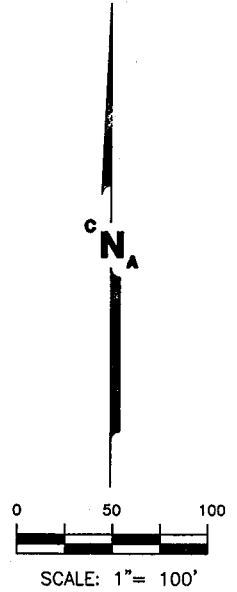
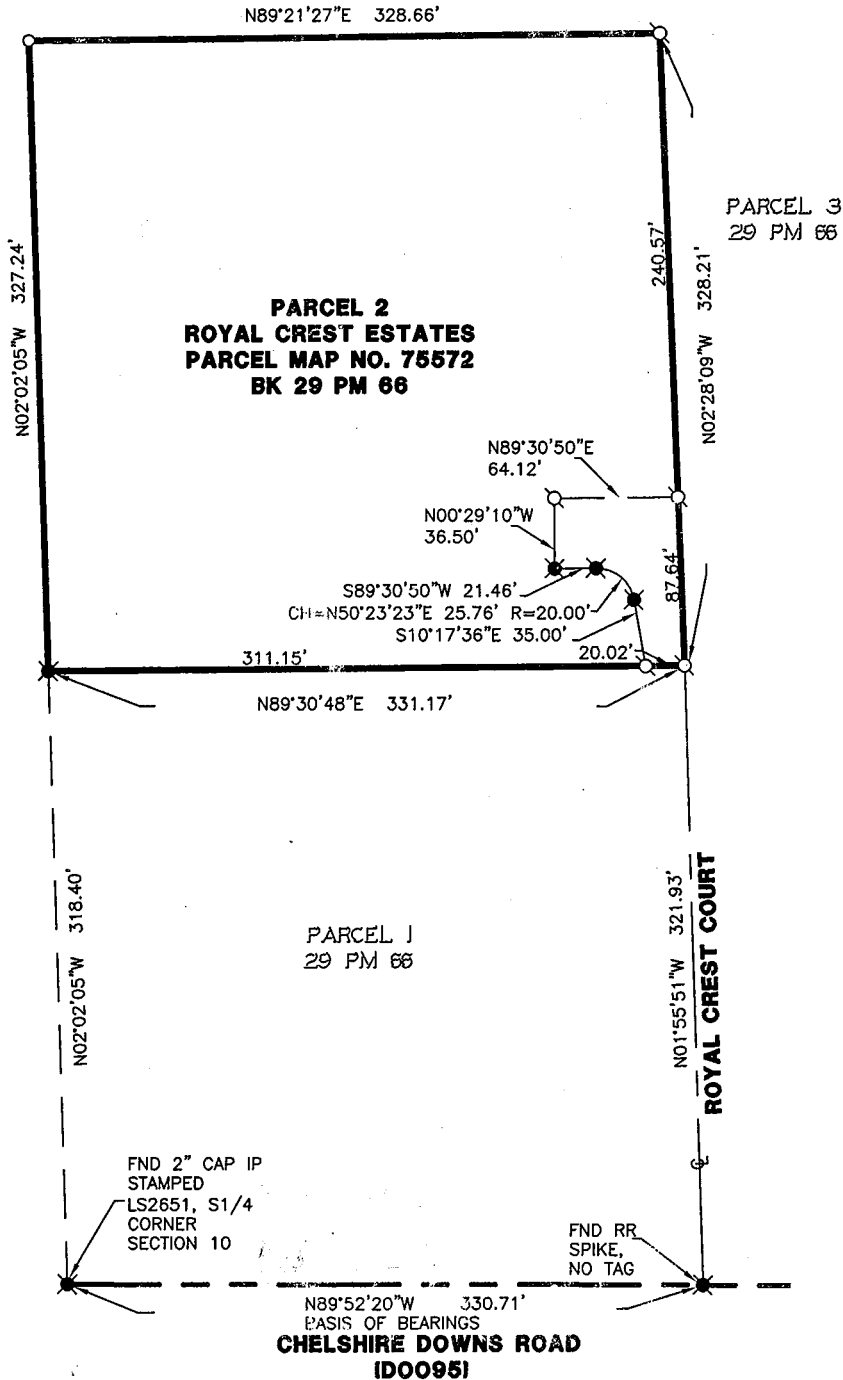
Title Deputy County Surveyor

County Surveyor's Comment _____



BOOK 16 CORNER RECORDS, PAGE 56

CORNER RECORD EXHIBIT



BOOK 12 CORNER RECORDS PG 56

LEGEND

- FND 3/4" IRON PIN, NO TAG
UNLESS OTHERWISE NOTED
- SET 5/8" REBAR WITH
CAP STAMPED RCE 33407
- DIMFNSION POINT



CNA ENGINEERING INC.
 CIVIL ENGINEERING: LAND SURVEYING: PLANNING: STRUCTURAL DESIGN

PHONE: (916) 485-3746
 2575 VALLEY ROAD, SACRAMENTO, CA 95821
 ct.cnceng@abcglobal.net