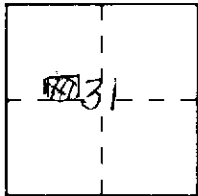


CORNER RECORD

Document Number _____

City of _____ County of PLACER, California

Brief Legal Description PARCEL 'C' PER 19 PM 17 IN SEC 31 T14N R9E



T14N
R9E

CORNER TYPE

- Government Corner
- Meander
- Rancho
- Date of Survey _____
- Control
- Property
- Other

COORDINATES (Optional)

N. _____
 E. _____
 Zone _____ Datum _____
 Elev. _____

Corner — Left as found Found and tagged Established Reestablished Rebuilt

Identification and type of corner found: Evidence used to identify or procedure used to establish or reestablish the corner:

SEE MAP

USED EXISTING CORNERS ON WEST LINE OF PARCEL 'C' WITH FOUND CORNERS ON THE SOUTH LINE OF PARCEL 'D' TO RE ESTABLISH CORNERS IN RECORD POSITION

A description of the physical condition of the monument as found and as set or reset: SEE MAP

FOUND 3/4" REBAR TAGGED RCE 8938
SET 3/4" REBAR AND CAP 653062

SURVEYOR'S STATEMENT

This Corner Record was prepared by me or under my direction in conformance with the Land Surveyors' Act on NOV. 26 2004

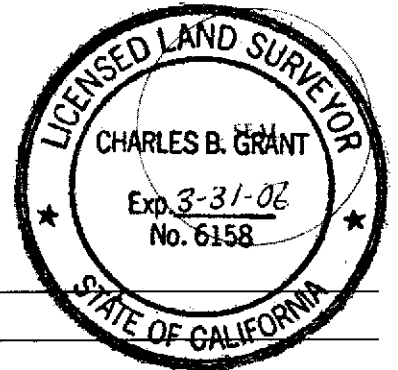
Signed Emerson R. Smith L.S. or ~~RCE~~ Number 3062



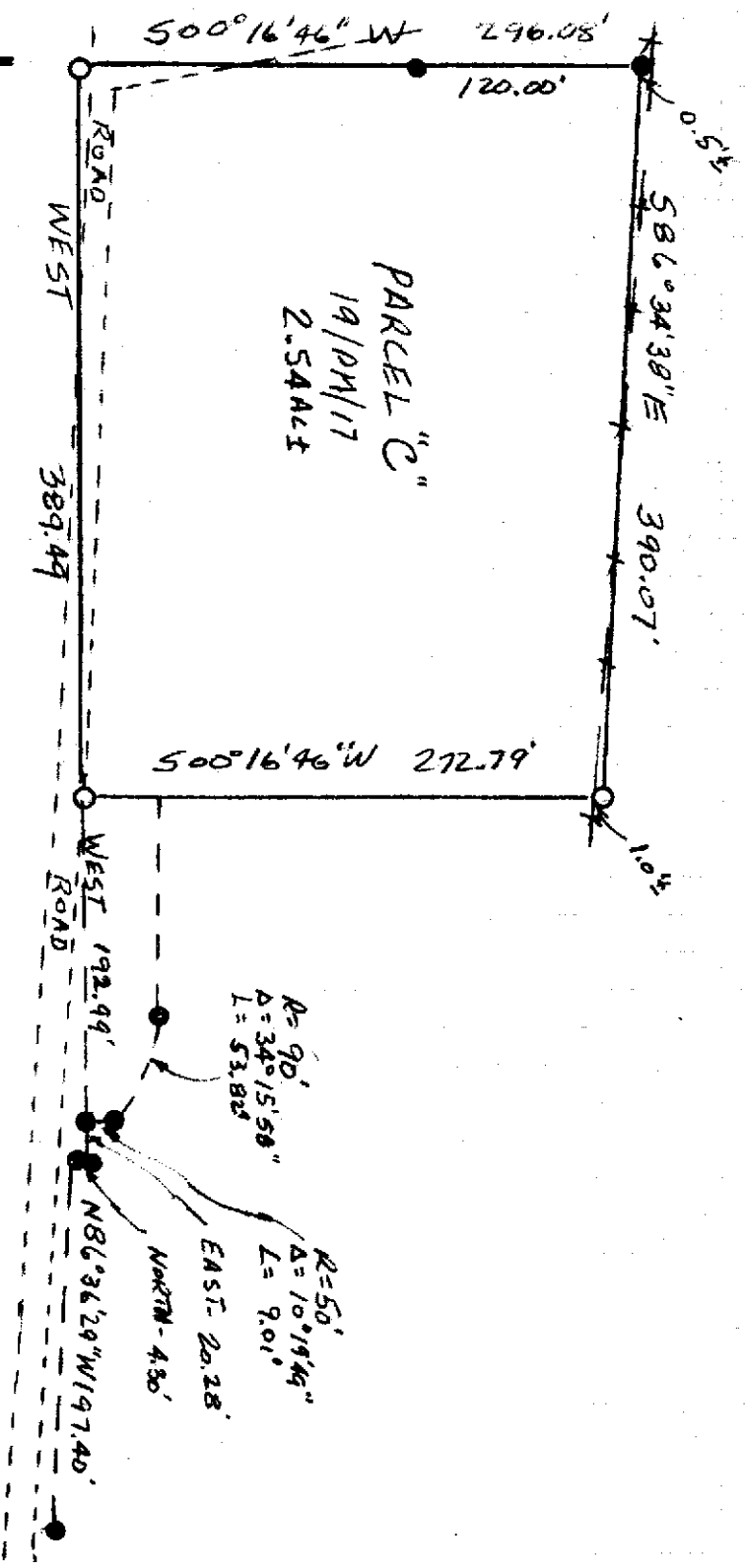
COUNTY SURVEYOR'S STATEMENT

This Corner Record was received DECEMBER 21 2004 and examined and filed FEB. 2 2005

Signed Charles B. Grant Title DEPUTY COUNTY SURVEYOR
LS 6158



County Surveyor's Comment _____



MAP SHOWING A RETRACEMENT OF PARCEL "C" OF 19/PM/17 SURVEYED AT THE REQUEST OF CAROL SOTO IN OCTOBER 2004, IN THE W/4 OF SEC. 31, T14N R9E EMERSON L. SMITH

- = FOUND $3/4''$ REBAR TAGGED RCE 8938 PER 19/PM/17.
- = SET $3/4''$ REBAR WITH PLASTIC CAP N/R/D. L33062