

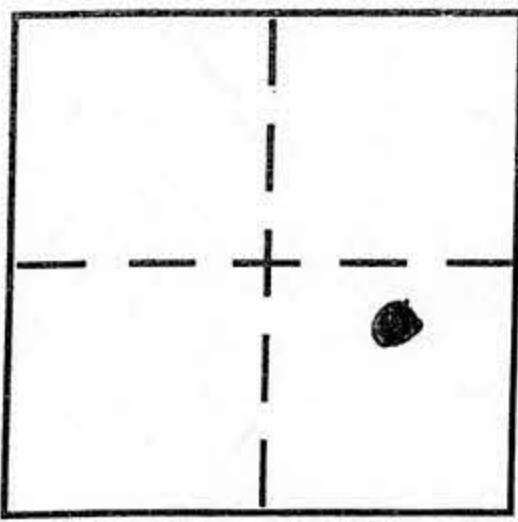
CORNER RECORD

Document Number _____

City of UNINCORPORATED AREA

County of PLACER, California

Brief Legal Description LOT 23 BLOCK "F" ICE LAKES UNIT #2
BOOK "G" OF MAPS PAGE 1 P.C.R.



S15C.27
T.17N.
R.14E
M.D.M.

CORNER TYPE

Government Corner Control
Meander Property
Rancho Other
Date of Survey 9/24/64

COORDINATES (Optional)

N. _____
E. _____
Zone NAD27 NAD83
NAD83 Epoch _____
Elev. _____
Vert. Datum: NGVD29 NAVD88
Meas. Units: Metric Imperial

Corner - Left as found Found and tagged Established Reestablished Rebuilt

Identification and type of corner found: Evidence used to identify or procedure used to establish or reestablish the corner:

● = FOUND 1" IRON PIPE W/PLASTIC PLUG, L.S. 5533
● = FOUND 1/2" REBAR, NO TAG

A description of the physical condition of the monument as found and as set or reset:

■ = FOUND REMAINS OF 2x2 AVB, ^{ORIGINAL} SET 1" IRON PIPE W/PLAS. PLUG L.S. 5549
○ = SET 1" IRON PIPE W/PLASTIC PLUG, L.S. 5549
⊗ = SET NAIL + TAG IN ROCK, L.S. 5549

JH. 04151

SURVEYOR'S STATEMENT

This Corner Record was prepared by me or under my direction in conformance with the Land Surveyor's Act on SEPT 27 2004

Signed Charles R. Sage P.L.S or R.C.E. No. L.S. 5549
LIC. EXP. 6/30/05



COUNTY SURVEYOR'S STATEMENT

This Corner Record was received FEB 22, 05

and examined and filed MARCH 7 2005

Signed Charles B. Grant P.L.S or R.C.E. No. LS 6158
LICENSE EXPIRES 3-31-06

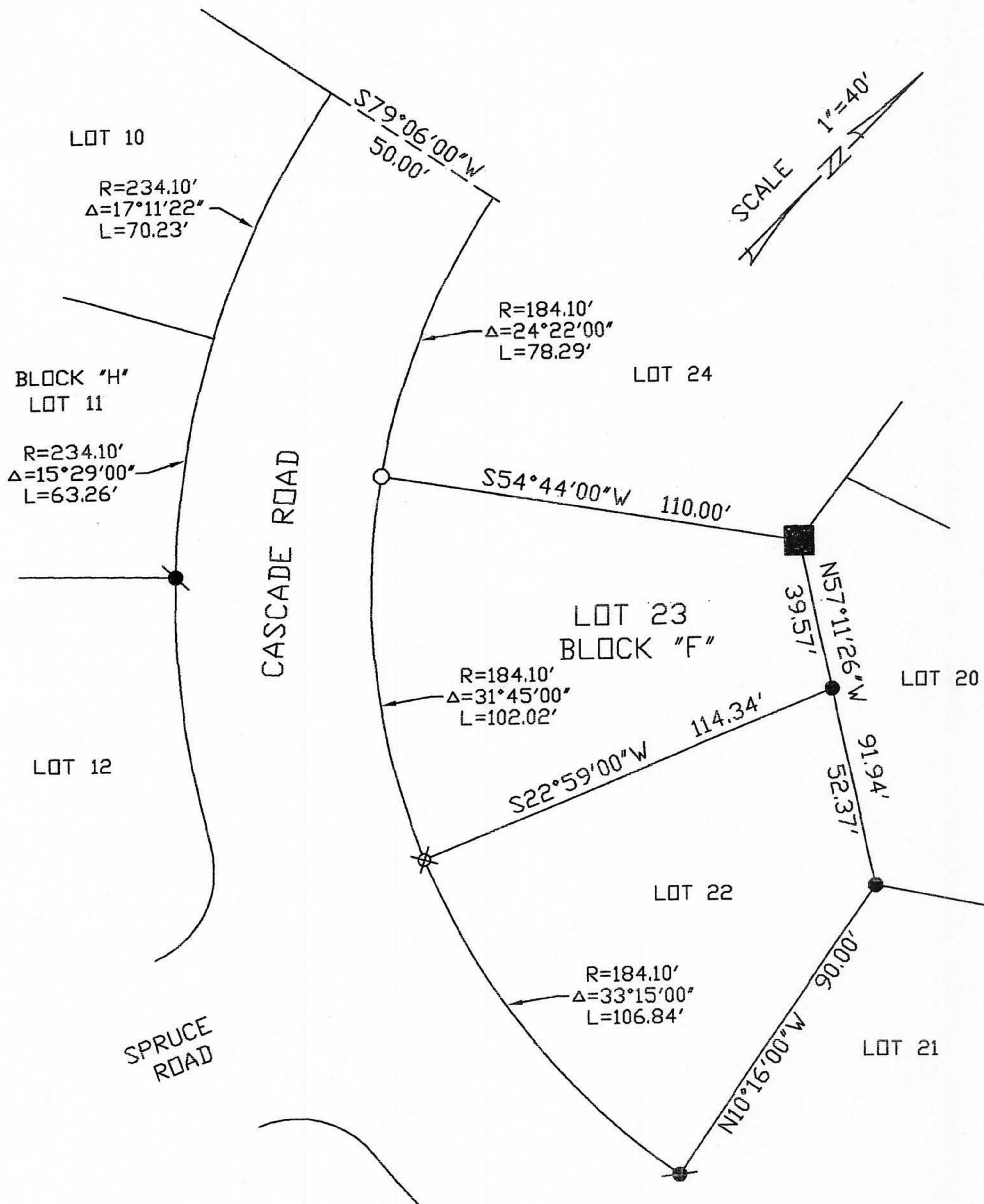
Title DEPUTY COUNTY SURVEYOR

County Surveyor's Comment _____



BOOK 9 CORNER RECORDS PAGE 51

NOTE: THE BEARINGS AND DISTANCES SHOWN ARE RECORD PER "G"/MAPS/1 P.C.R.
 NO MATERIAL DISCREPANCIES WITH RECORD INFORMATION WERE FOUND.



BOOK 9 CORNER RECORDS PAGE 51