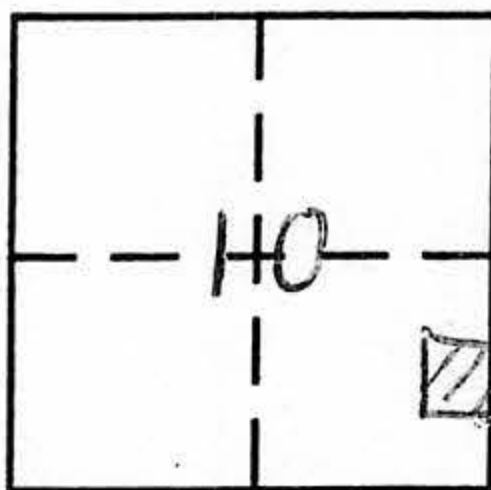


CORNER RECORD

COUNTY OF PLACER, CALIFORNIA

City of \_\_\_\_\_ Document Number \_\_\_\_\_

Brief Legal Description LOT 1 & 2 OF CHRISTIAN VALLEY PARK UNIT B PER H MAPS 37



SEC 10  
T13N  
R8E

CORNER TYPE

- Government Corner
- Meander
- Rancho
- Date of Survey \_\_\_\_\_
- Control
- Property
- Other

COORDINATES (Optional)

N. \_\_\_\_\_  
E. \_\_\_\_\_  
Zone \_\_\_\_\_ Datum \_\_\_\_\_  
Elev. \_\_\_\_\_

Corner — Left as found  Found and tagged  Established  Reestablished  Rebuilt

Identification and type of corner found: Evidence used to identify or procedure used to establish or reestablish corner:

FOUND ORIGINAL MONUMENTS PER BK H MAPS PG 37  
TO REESTABLISH THE S. WEST CORNERS OF LOTS 1 AND 2  
IN RECORD POSITION

A description of the physical condition of the monument as found and as set or reset:

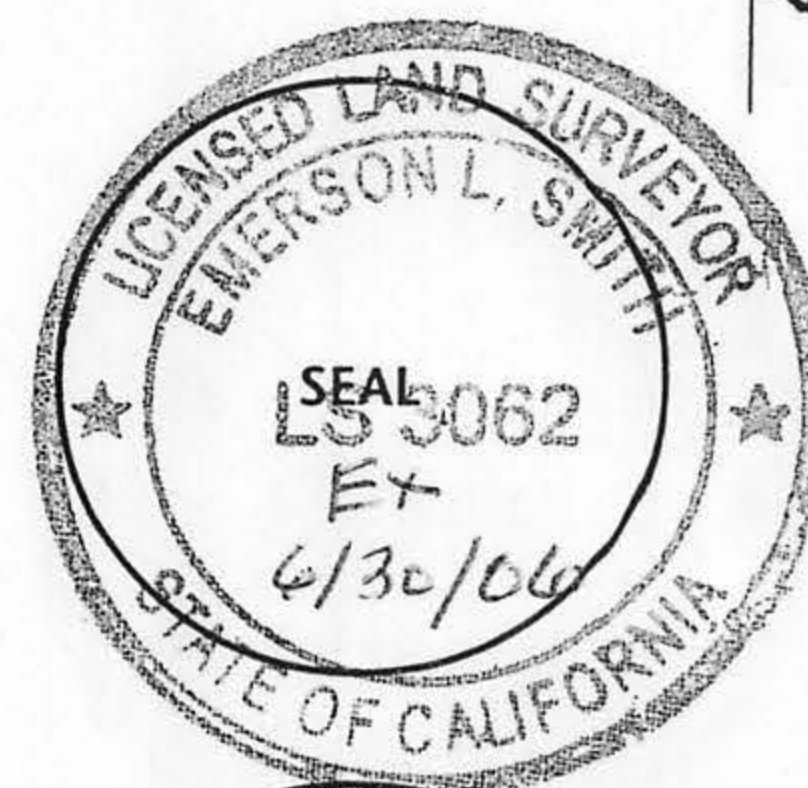
SET 3/4" REBAR WITH PLASTIC CAP LS 3062

SURVEYOR'S STATEMENT

This Corner Record was prepared by me or under my direction in conformance with the Land

Surveyors' Act on DEC. 23, 2004.

Signed Emerson R. Smith L.S. or R.C.E. Number LS 3062



COUNTY SURVEYOR'S STATEMENT

This Corner Record was received FEB 24 2005 and examined

and filed MARCH 7 2005.

Signed Charles B. Grant LS 6158 Title DEPUTY COUNTY SURVEYOR  
LICENSE EXPIRES 3-31-06



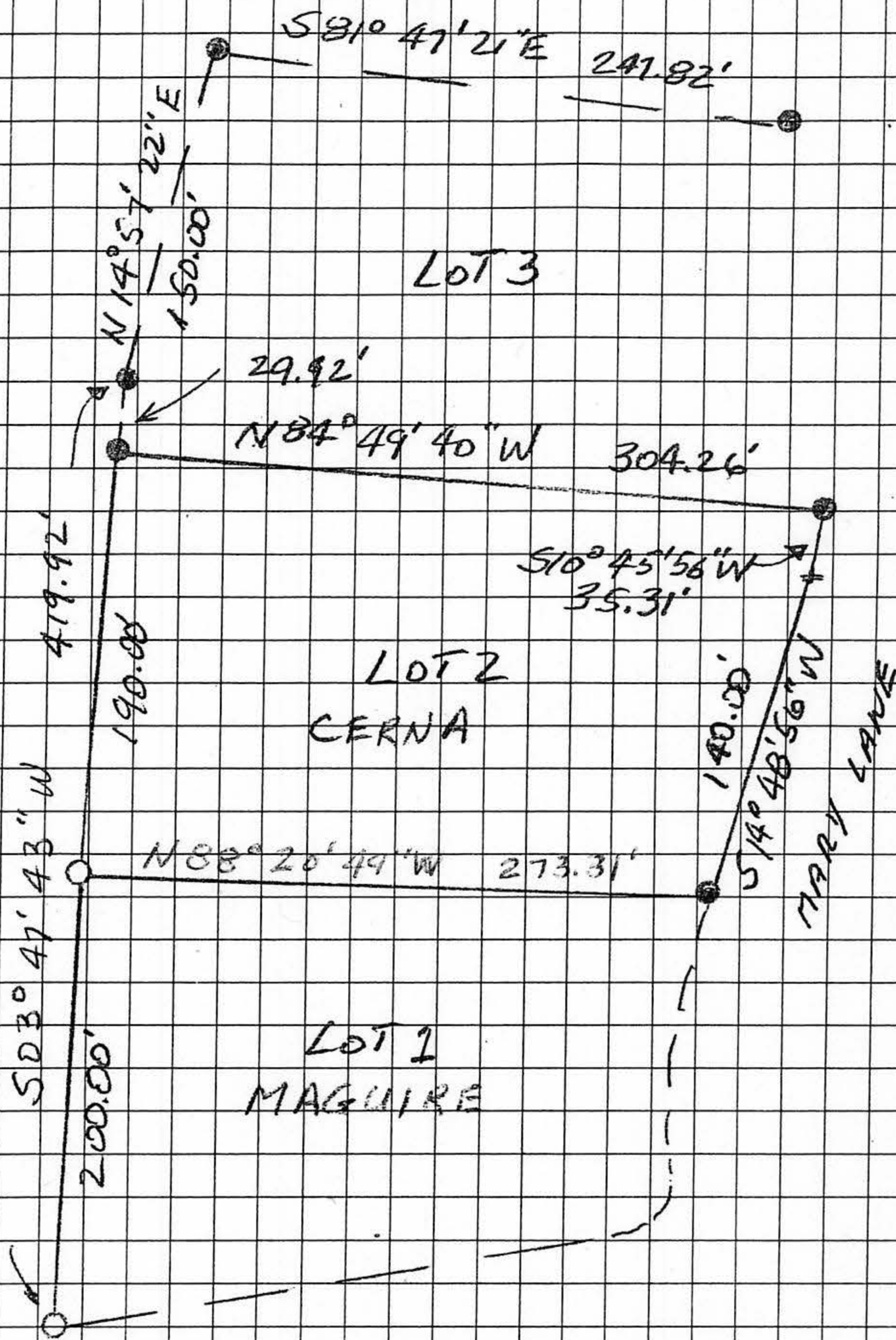
County Surveyor's Comment \_\_\_\_\_

BOOK 9 CORNER RECORDS PAGE 57



BK H MAPS, PG 37

LOT 15



SURVEY SHOWING LOT 1 & 2 OF CHRISTIAN VALLEY  
 PARK UNIT NO. 3 SURVEYED FOR GEORGE CERNA AND  
 THOMAS MAGUIRE, DECEMBER 2004.

EMERSON L. SMITH

LS 3062

- SET 3/4" REBAR WITH PLASTIC CAP MKD. LS 3062
- FOUND 1/2" REBAR TAGGED REC 9093.