

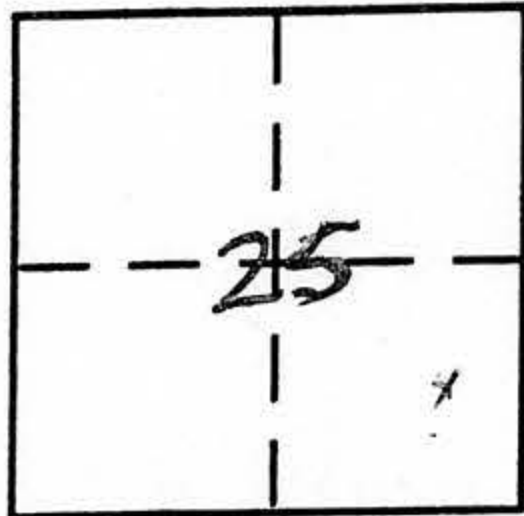
CORNER RECORD

Document Number _____

City of UNINCORPORATED

County of PLAKE, California

Brief Legal Description LOT 32 P/MAR 53 Ptn SE 1/4 SEC 25 T12N R7E M.D.M.



T12N
R7E

CORNER TYPE

- Government Corner Control
- Meander Property
- Rancho Other
- Date of Survey 1-30-05

COORDINATES (Optional)

- N. _____
- E. _____
- Zone _____ NAD27 NAD83
- NAD83 Epoch _____
- Elev. _____
- Vert. Datum: NGVD29 NAVD88
- Meas. Units: Metric Imperial

Corner - Left as found Found and tagged Established Reestablished Rebuilt

Identification and type of corner found: Evidence used to identify or procedure used to establish or reestablish the corner:

FIND. MONUMENTS AS SHOWN TO CALL LOCATION OF MISSING SE CUR

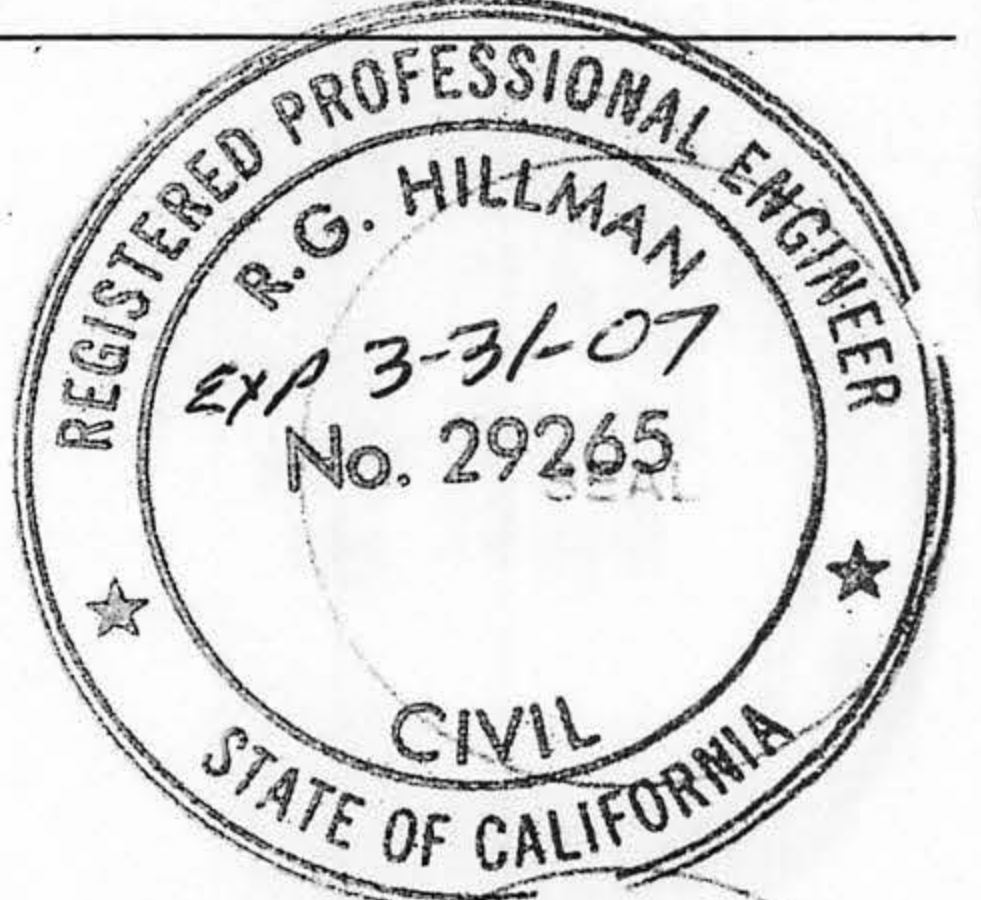
A description of the physical condition of the monument as found and as set or reset: RESET CUR. W/ 3/4" ROBAR

w/ PLASTIC STAMPED RCE 29265 IN RECORD POSITION

SURVEYOR'S STATEMENT

This Corner Record was prepared by me or under my direction in conformance with the Land Surveyor's Act on 2-1-05

Signed R.G. Hillman P.L.S or R.C.E. No. RCE 29265



COUNTY SURVEYOR'S STATEMENT

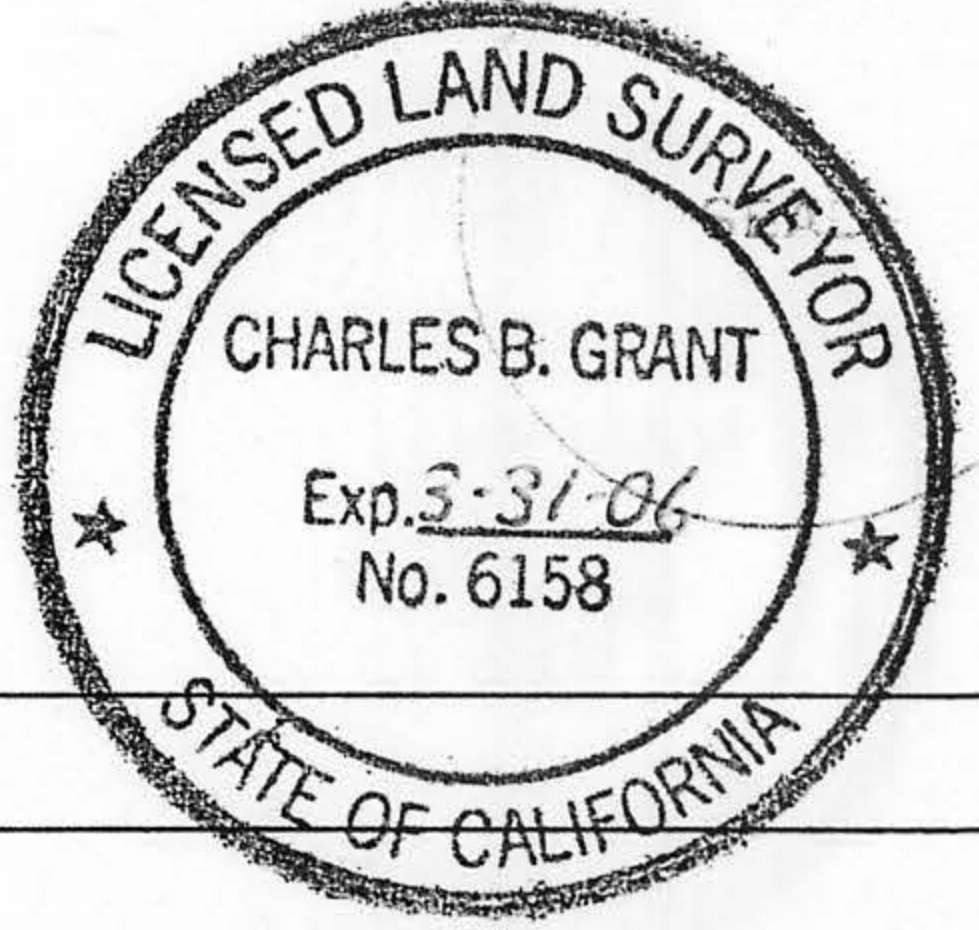
This Corner Record was received FEB 28, 2005

and examined and filed MARCH 7 2005

Signed Charles B. Grant P.L.S or R.C.E. No. LS 6158

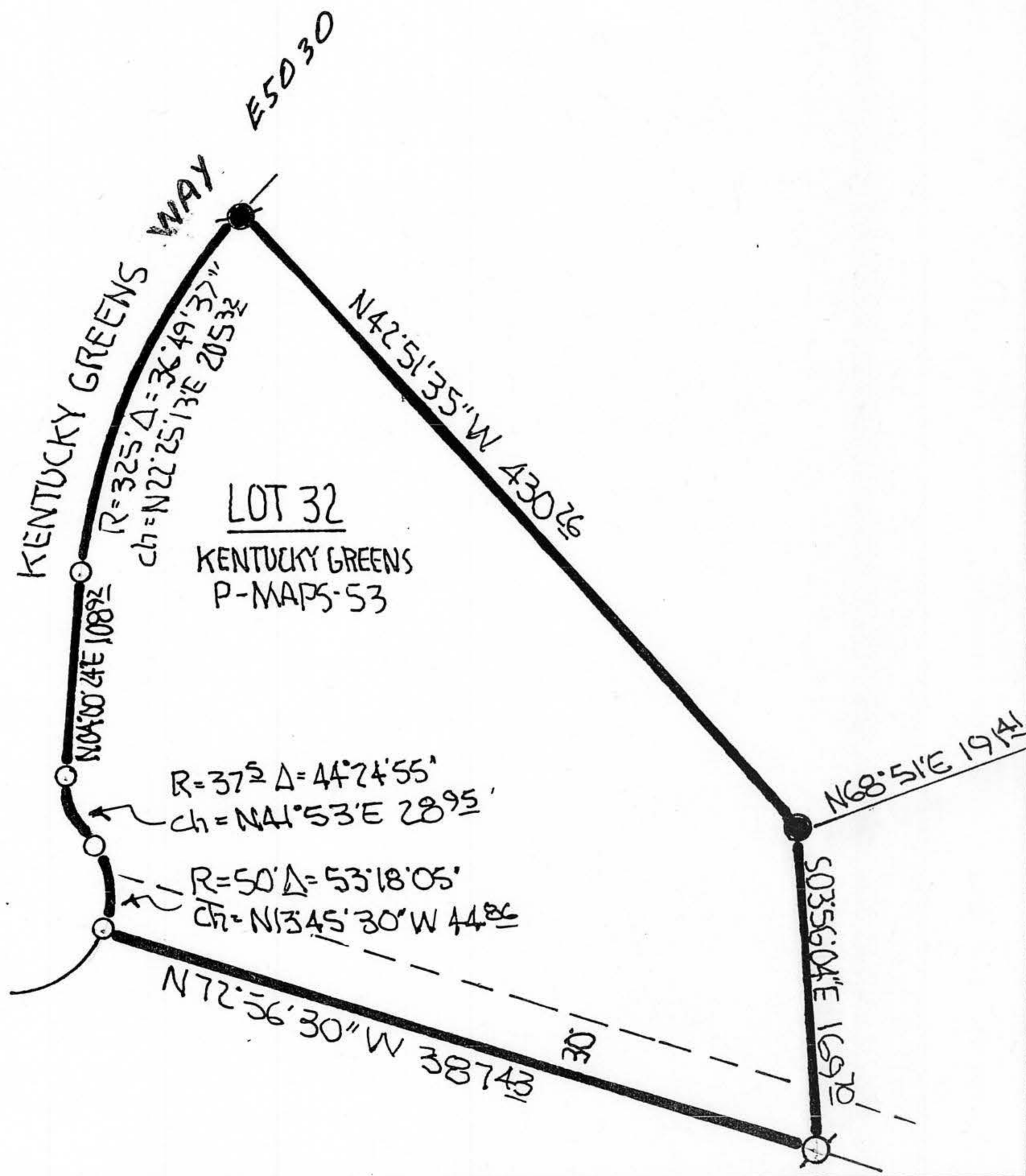
Title DEPUTY COUNTY SURVEYOR

County Surveyor's Comment _____



BOOK 9 CORNER RECORDS PAGE 55

- FND 5/8" REBAR W/TAG LS 3851
- FND 3/4" REBAR W/TAG LS 4785
- SET 3/4" REBAR W/ PLASTIC CAP RCE 29265
- NOTHING FND. NOTHING SET



BOOK 9 CORNER RECORDS PAGE 55