

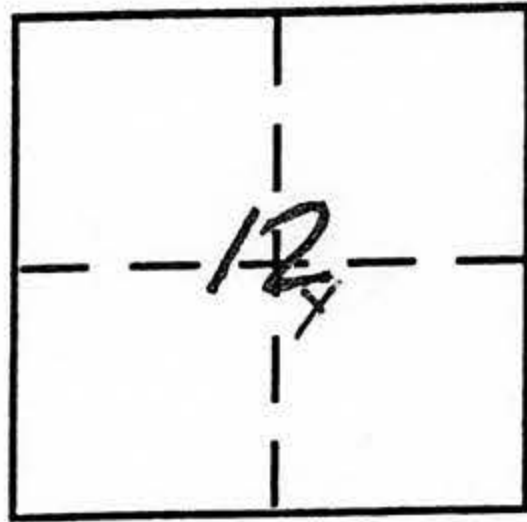
CORNER RECORD

Document Number _____

City of UNINCORPORATED

County of PLNER, California

Brief Legal Description PL APM 14-21 P4 SE 1/4 SEC 12 T13N R9E



T13N
R9E

CORNER TYPE

- Government Corner Control
- Meander Property
- Rancho Other
- Date of Survey 12-22-04

COORDINATES (Optional)

- N. _____
- E. _____
- Zone _____ NAD27 NAD83
- NAD83 Epoch _____
- Elev. _____
- Vert. Datum: NGVD29 NAVD88
- Meas. Units: Metric Imperial

Corner - Left as found Found and tagged Established Reestablished Rebuilt

Identification and type of corner found: Evidence used to identify or procedure used to establish or reestablish the corner:
FND. 3/4" IRON PINS RCE 9093 USED POSITIONS TO CALCULATE POSITION OF MISSING POINTS IN RECORD LOCATION

A description of the physical condition of the monument as found and as set or reset: RESET MISSING CURS. W/ 3/4" REBAR W/ PLASTIC CAP STAMPED RCE 29265

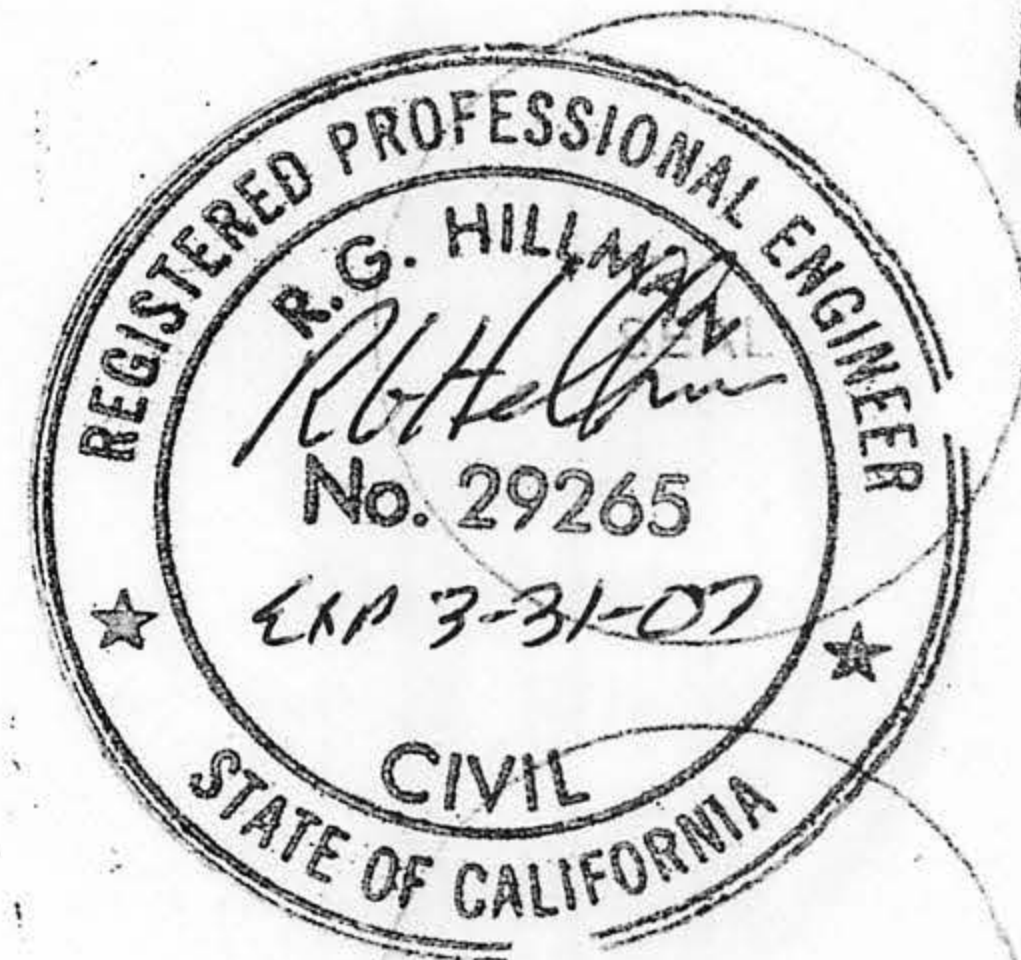
SURVEYOR'S STATEMENT

This Corner Record was prepared by me or under my direction in conformance with the Land Surveyor's Act on 2-10-05
Signed R.G. Hillman P.L.S or R.C.E. No. RCE 29265

COUNTY SURVEYOR'S STATEMENT

This Corner Record was received FEB 28, 2005
and examined and filed MARCH 7 2005
Signed Charles B. Grant P.L.S or R.C.E. No. LS 6158
Title DEPUTY COUNTY SURVEYOR
LICENSE EXPIRES 3-31-06

County Surveyor's Comment _____

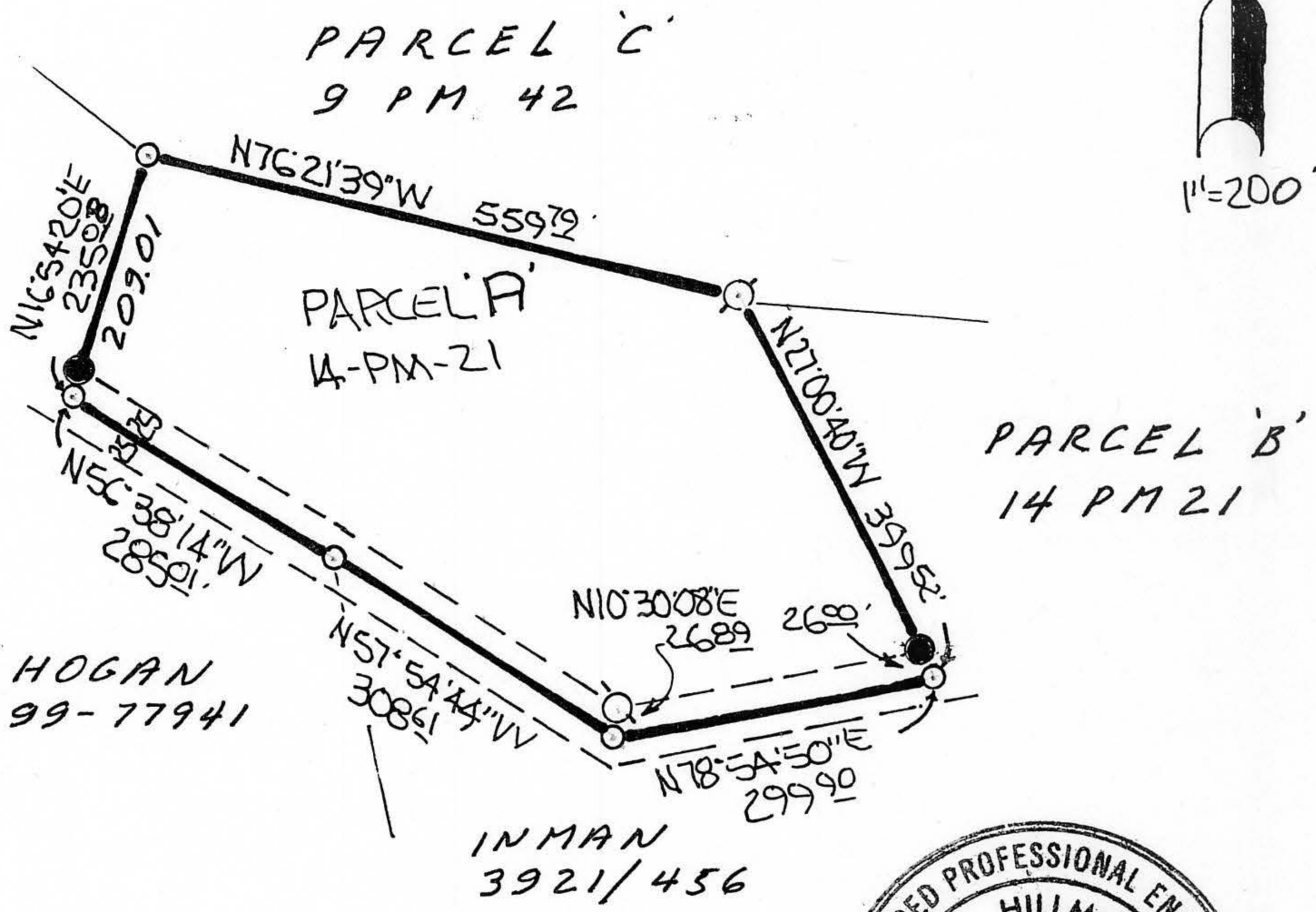


BOOK 2 CORNER RECORDS PAGE 57

○ NOTHING FND. NOTHING SET

● FND 3/4" REBAR RCE 9093

○ SET 3/4" REBAR W/PASTKCAP
STAMPED RCE 29265



BOOK 9 CORNER RECORDS PAGE 57