

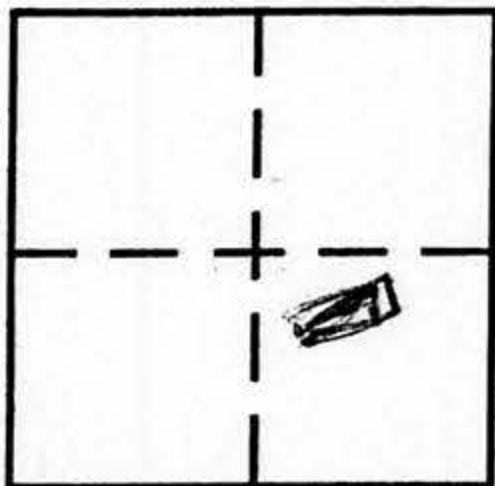
CORNER RECORD

COUNTY OF PLACER, CALIFORNIA

City of COUNTY OF PLACER

Document Number _____

Brief Legal Description SOUTHWESTLY LINE OF PARCELA OF 2 PM 75 BEING A PORTION OF THE SE 1/4 OF SEC 31 T 13N R 8E MDM



SEC. 31
T 13N
R 8E

CORNER TYPE

- Government Corner
- Meander
- Rancho
- Date of Survey _____
- Control
- Property
- Other

COORDINATES (Optional)

N. _____
 E. _____
 Zone _____ Datum _____
 Elev. _____

Corner — Left as found Found and tagged Established Reestablished Rebuilt

Identification and type of corner found: Evidence used to identify or procedure used to establish or reestablish corner:

SEE MAP

FOUND ORIGINAL MONUMENTS PER 2 PM 75 TO RE-ESTABLISH RECORD LOCATION OF SOUTHWESTLY CORNER OF PARCELA

A description of the physical condition of the monument as found and as set or reset: SEE MAP

SET 3/4 REBAR AND CAP LS 3062 AS 8⁰⁰ RP TO ESTABLISHED CORNER

SURVEYOR'S STATEMENT

This Corner Record was prepared by me or under my direction in conformance with the Land

Surveyors' Act on MARCH 16 2005.

Signed Emerson L. Smith L.S. or R.C.E. Number LS 3062

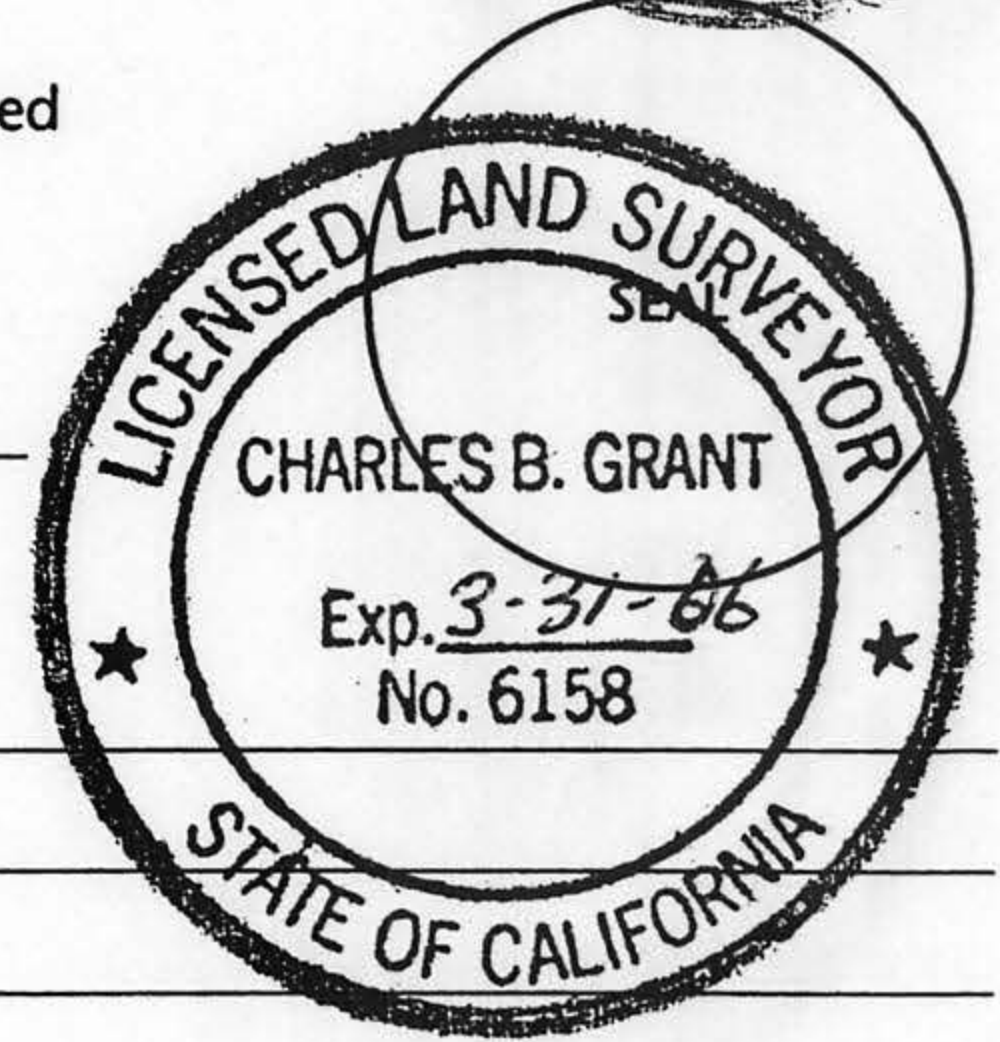


COUNTY SURVEYOR'S STATEMENT

This Corner Record was received APRIL 12 2005 and examined

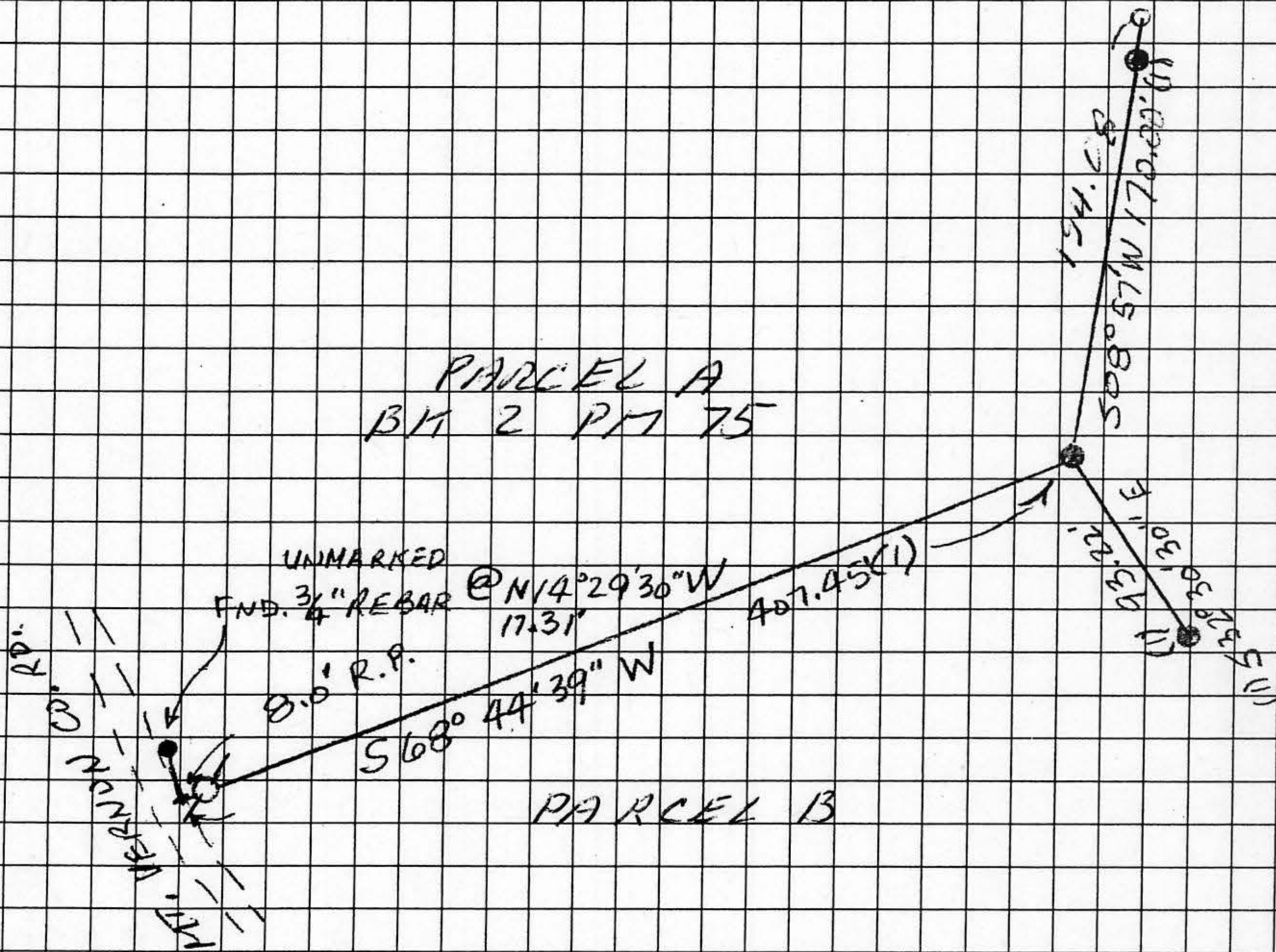
and filed APRIL 26 2005.

Signed Charles B. Grant Title DEPUTY COUNTY SURVEYOR
LS 6158



County Surveyor's Comment _____

BOOK 9 CORNER RECORDS PAGE 62



MAP SHOWING A SURVEY DONE FOR

WILLIAM BOWLEN

ON THE SOUTHERLY LINE OF PARCEL A

OF 2/PM/75 BEING A PORTION OF THE

SE 1/4 OF SECTION 31, T. 13N., R. 8E., MDM.

○ NOTHING FOUND, NOTHING SET

● = FOUND 5/8\" REBAR TAGGED LS 3062 (1)

⊙ = SET 3/4\" REBAR WITH PLASTIC CAP M'K'D LS 3062

NOTE: THE CORNER POINT FOR THE SW CORNER OF PARCEL A FELL ABOUT 2' INTO THE COUNTY ROAD, AND THE PAVEMENT WAS TOO HARD TO ACCEPT A R.R. SPIKE SO AN 8' R.P. WAS SET.

1" = 100'

EMERSON L. SMITH

MARCH 2005

LS 3062