

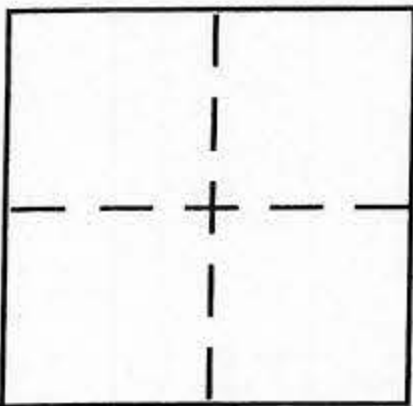
CORNER RECORD

Document Number _____

City of _____

County of PLACER, California

Brief Legal Description LOT 159 CARNELIAN HEIGHTS UNIT No.3, H/MAPS/87 O.R.P.C.



CORNER TYPE

SEC. 28
T. 16 N
R. 17 E
M.D.B. & M. Date of Survey 5-17-2005

Government Corner Control
 Meander Property
 Rancho Other

COORDINATES (Optional)

N. _____
 E. _____
 Zone _____ NAD27 NAD83
 NAD83 Epoch _____
 Elev. _____
 Vert. Datum: NGVD29 NAVD88
 Meas. Units: Metric Imperial

Corner - Left as found Found and tagged Established Reestablished Rebuilt

Identification and type of corner found: Evidence used to identify or procedure used to establish or reestablish the corner:

USED RECORD DIMENSIONS AND FOUND ORIGINAL MONUMENTS PER H/MAPS/87, O.R.P.C., TO REESTABLISH THE MISSING CORNERS OF LOT 159, AS SHOWN ON THE ACCOMPANYING PLAT.

A description of the physical condition of the monument as found and as set or reset: SET 5/8" REBAR WITH YELLOW PLASTIC CAP MARKED L.S. 7429.

SURVEYOR'S STATEMENT

This Corner Record was prepared by me or under my direction in conformance with the Land Surveyor's Act on 5/25/05

Signed Matthew S. Webb P.L.S. or R.C.E. No. 7429



COUNTY SURVEYOR'S STATEMENT

This Corner Record was received MAY 26, 05

and examined and filed JUNE 7 2005

Signed Charles B. Grant P.L.S. or R.C.E. No. LS 6158

Title DEPUTY COUNTY SURVEYOR

County Surveyor's Comment _____

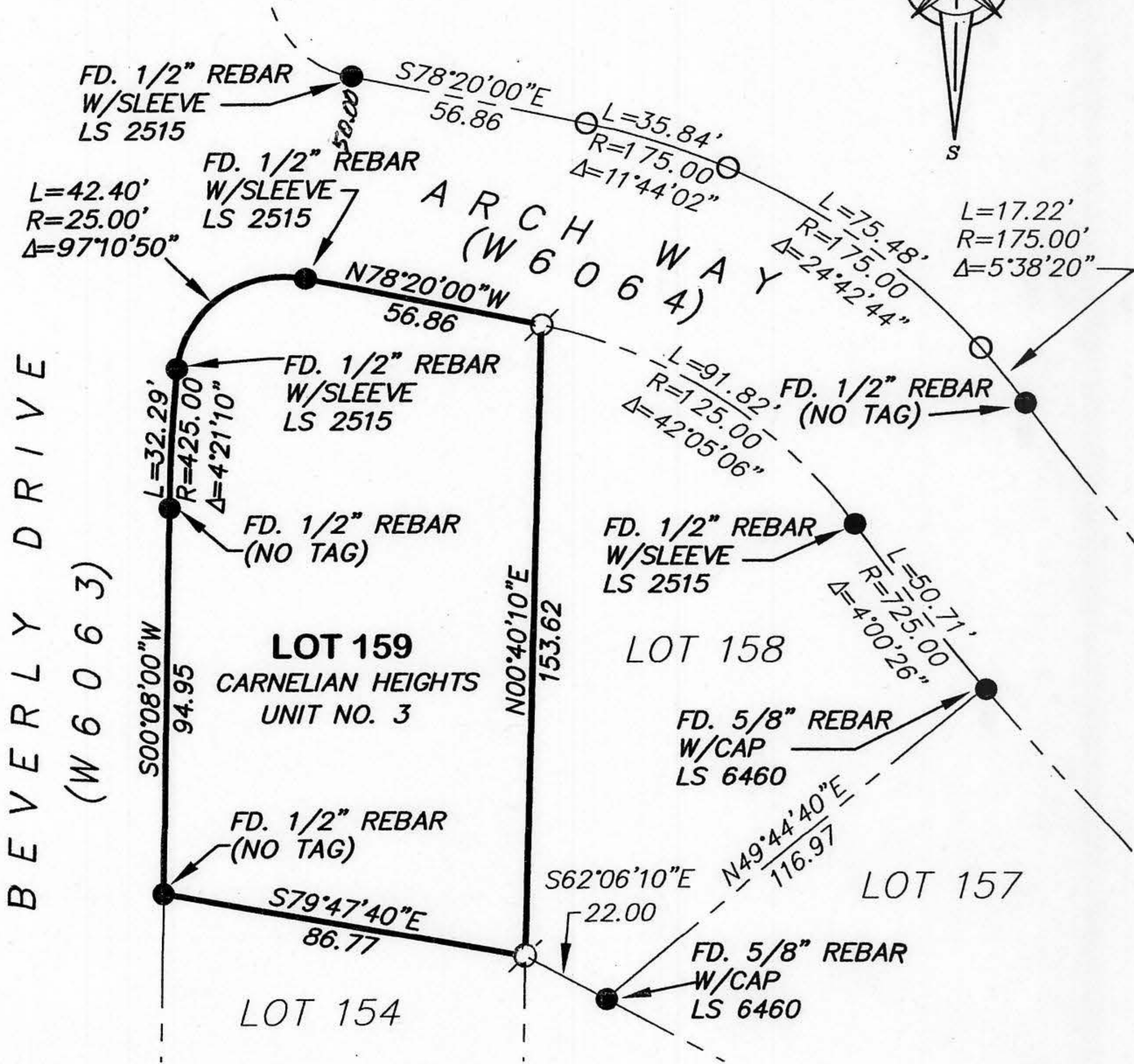
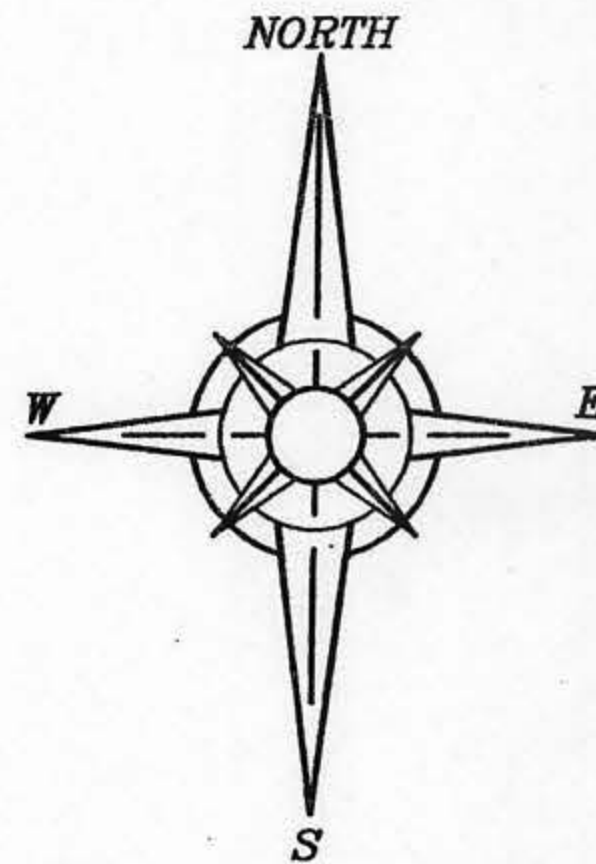


BOOK 9 PAGE 78

PLAT OF SURVEY

LOT 159, CARNELIAN HEIGHTS UNIT NO. 3
 SUBDIVISION, BOOK H OF MAPS AT PAGE 87,
 OFFICIAL RECORDS PLACER COUNTY CALIFORNIA, A
 PORTION OF THE N.W. 1/4 OF SECTION 28,
 TOWNSHIP 16 N., RANGE 17 E., M.D.B.&M.

SCALE 1" = 40' DATE OF SURVEY 5/17/2005



BOOK 9 PAGE 78

NOTE:

ALL BEARINGS AND DISTANCES SHOWN HEREON ARE RECORD PER H/MAPS/87, O.R.P.C.

- FOUND MONUMENT AS SHOWN HEREON
- SET 5/8" REBAR WITH YELLOW PLASTIC CAP L.S. 7429
- DIMENSION PT (NOTHING FOUND OR SET)

J/N 971.00