

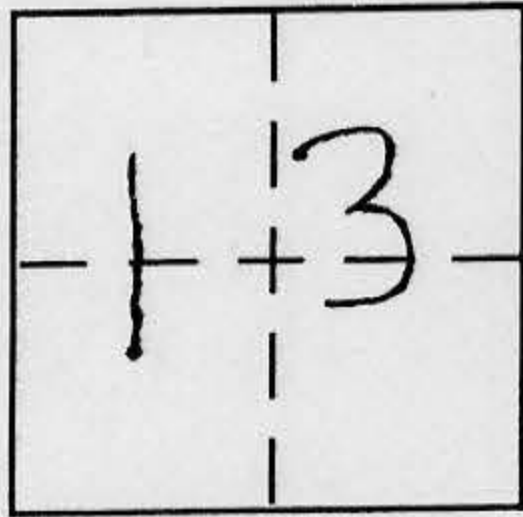
CORNER RECORD

Document Number \_\_\_\_\_

City of \_\_\_\_\_

County of Placer, California

Brief Legal Description Beach AVE. Woodvista Sub. Book D MAPS PG. 12  
O.R. R.C.



T16M  
R17E

CORNER TYPE

Government Corner  Control   
Meander  Property   
Rancho  Other   
Date of Survey MAY 11, 2000

COORDINATES (Optional)

~~N. \_\_\_\_\_  
E. \_\_\_\_\_  
Zone \_\_\_\_\_ NAD27  NAD83   
NAD83 Epoch \_\_\_\_\_  
Elev. \_\_\_\_\_  
Vert. Datum: NGVD29  NAVD88   
Meas. Units: Metric  Imperial~~

Corner - Left as found  Found and tagged  Established  Reestablished  Rebuilt

Identification and type of corner found: Evidence used to identify or procedure used to establish or reestablish the corner:

SEE SKETCH ON BACK

USED RECORD INFORMATION PER BH D/MAPS/12 AND  
BH 15 SUR III TO RE-ESTABLISH R/W POINT IN  
RECORD POSITION

A description of the physical condition of the monument as found and as set or reset:

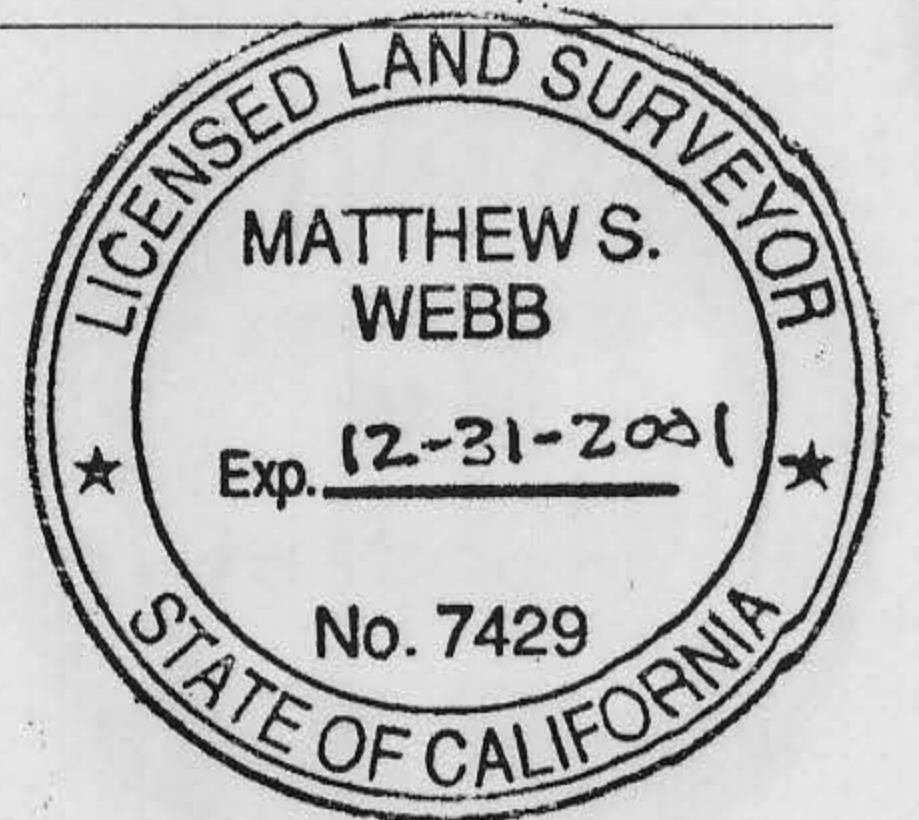
SEE SKETCH ON BACK  
SET 5/8" REBAR & CAP LS 7429

SURVEYOR'S STATEMENT

This Corner Record was prepared by me or under my direction in conformance with

the Land Surveyor's Act on May 23 2000

Signed Matthew S. Webb P.L.S. or R.C.E. No. 7429



COUNTY SURVEYOR'S STATEMENT

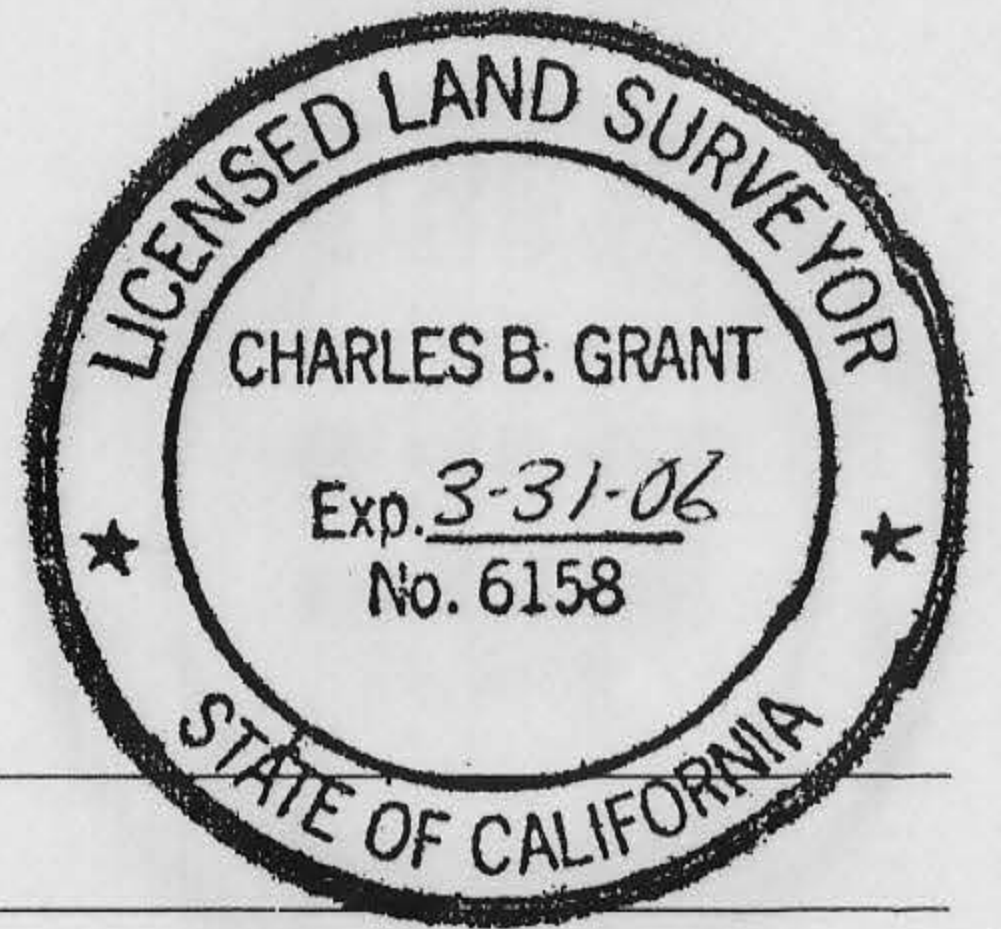
This Corner Record was received MAY 26, 2000

and examined and filed JUNE 17 2005

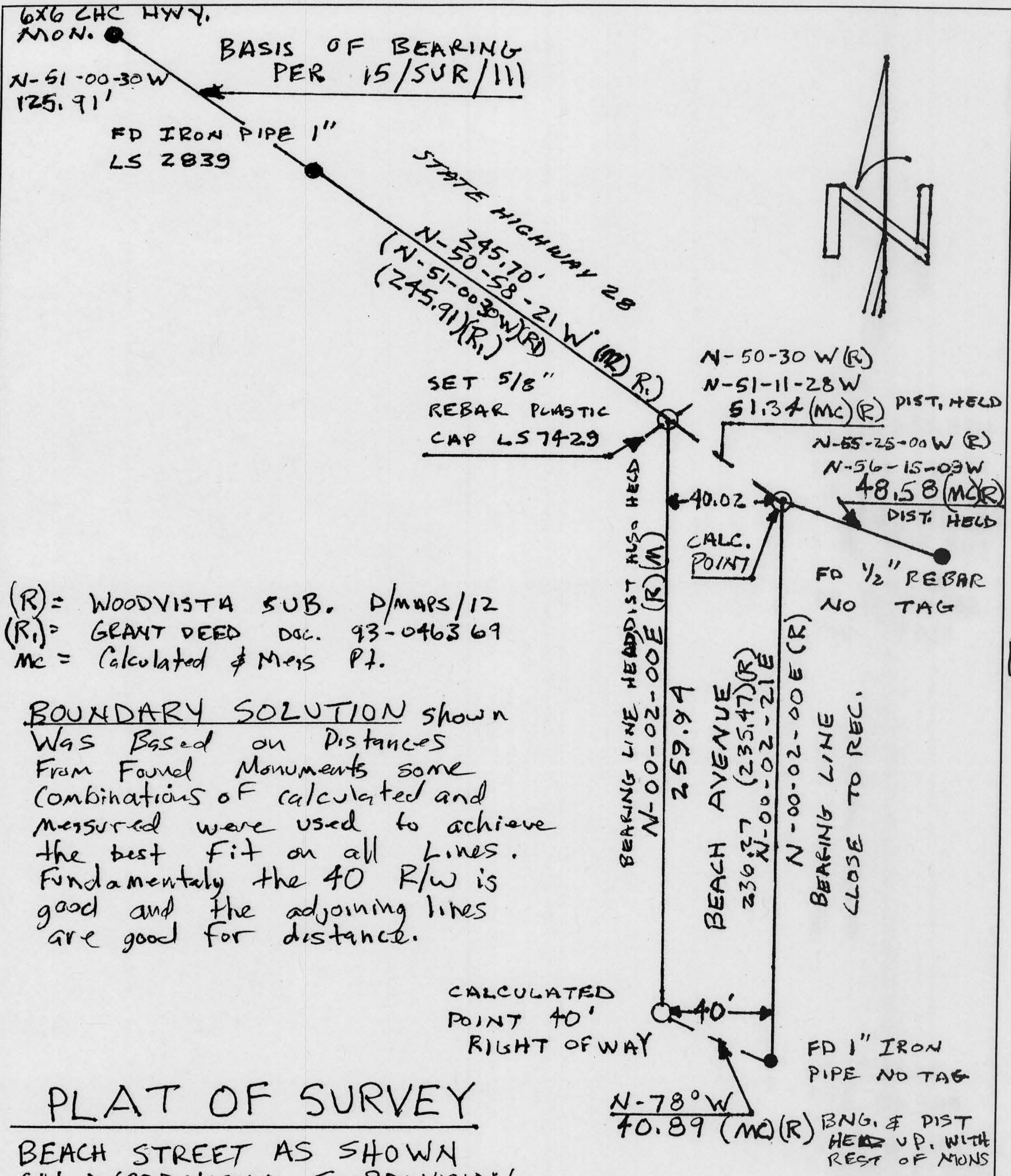
Signed Charles B. Grant P.L.S. or R.C.E. No. LS 6158

Title DEPUTY COUNTY SURVEYOR

County Surveyor's Comment \_\_\_\_\_



BOOK 7 PAGE 32



BOOK 9 PAGE 82

(R) = WOODVISTA SUB. D/MAPS/12  
 (R<sub>1</sub>) = GRANT DEED DOC. 93-046369  
 MC = Calculated & Meas Pt.

BOUNDARY SOLUTION shown was based on distances from found monuments some combinations of calculated and measured were used to achieve the best fit on all lines. Fundamentally the 40 R/W is good and the adjoining lines are good for distance.

PLAT OF SURVEY

BEACH STREET AS SHOWN ON WOODVISTA, SUBDIVISION RECORDED IN D/MAPS/12 O.R.P.C. SEC. 13, T. 16N. R. 17E. M DB & M.

PLACER COUNTY CALIFORNIA.

SURVEY DATE 8 MAY 11, 2000.

NOT TO SCALE