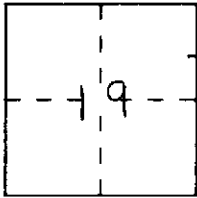


# CORNER RECORD

Document Number \_\_\_\_\_

City of \_\_\_\_\_ County of Placer, California

Brief Legal Description Lots 94 & 95, Block BE, of Brockway Vista Subd.  
D/Maps/16 ORPC



### CORNER TYPE

Government Corner  Control   
 Meander  Property   
 Rancho  Other   
 Date of Survey 9-22-99

### COORDINATES (Optional)

N. \_\_\_\_\_  
 E. \_\_\_\_\_  
 Zone \_\_\_\_\_ Datum \_\_\_\_\_  
 Elev. \_\_\_\_\_

Corner — Left as found  Found and tagged  Established  Reestablished  Rebuilt

Identification and type of corner found: Evidence used to identify or procedure used to establish or reestablish the corner:

A proration between found monuments; was used to  
establish both corners IN RECORD LOCATION  
See Sketch on Back

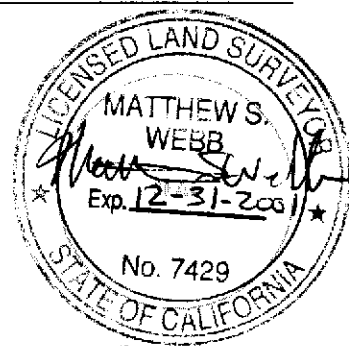
A description of the physical condition of the monument as found and as set or reset: \_\_\_\_\_

See Sketch on Back  
SET 5/8" REBAR LS 7429 AT N.W. CORNER LOT 95  
SET R.R. SPINE LS 7429 AT S.E. CORNER LOT 94

### SURVEYOR'S STATEMENT

This Corner Record was prepared by me or under my direction in conformance with the Land Surveyors' Act on September 29 1999.

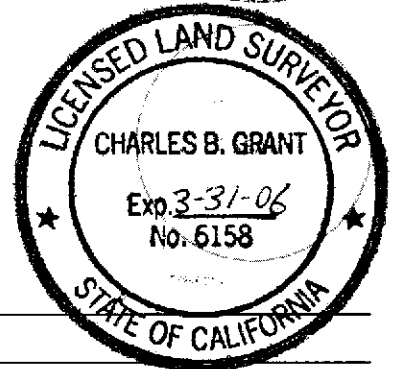
Signed Matthew S. Webb L.S. or R.C.E. Number 7429



### COUNTY SURVEYOR'S STATEMENT

This Corner Record was received SEPT 30 1999 and examined and filed JUNE 17 2005 19  .

Signed Charles B. Grant Title DEPUTY COUNTY SURVEYOR  
LS 6158



County Surveyor's Comment \_\_\_\_\_

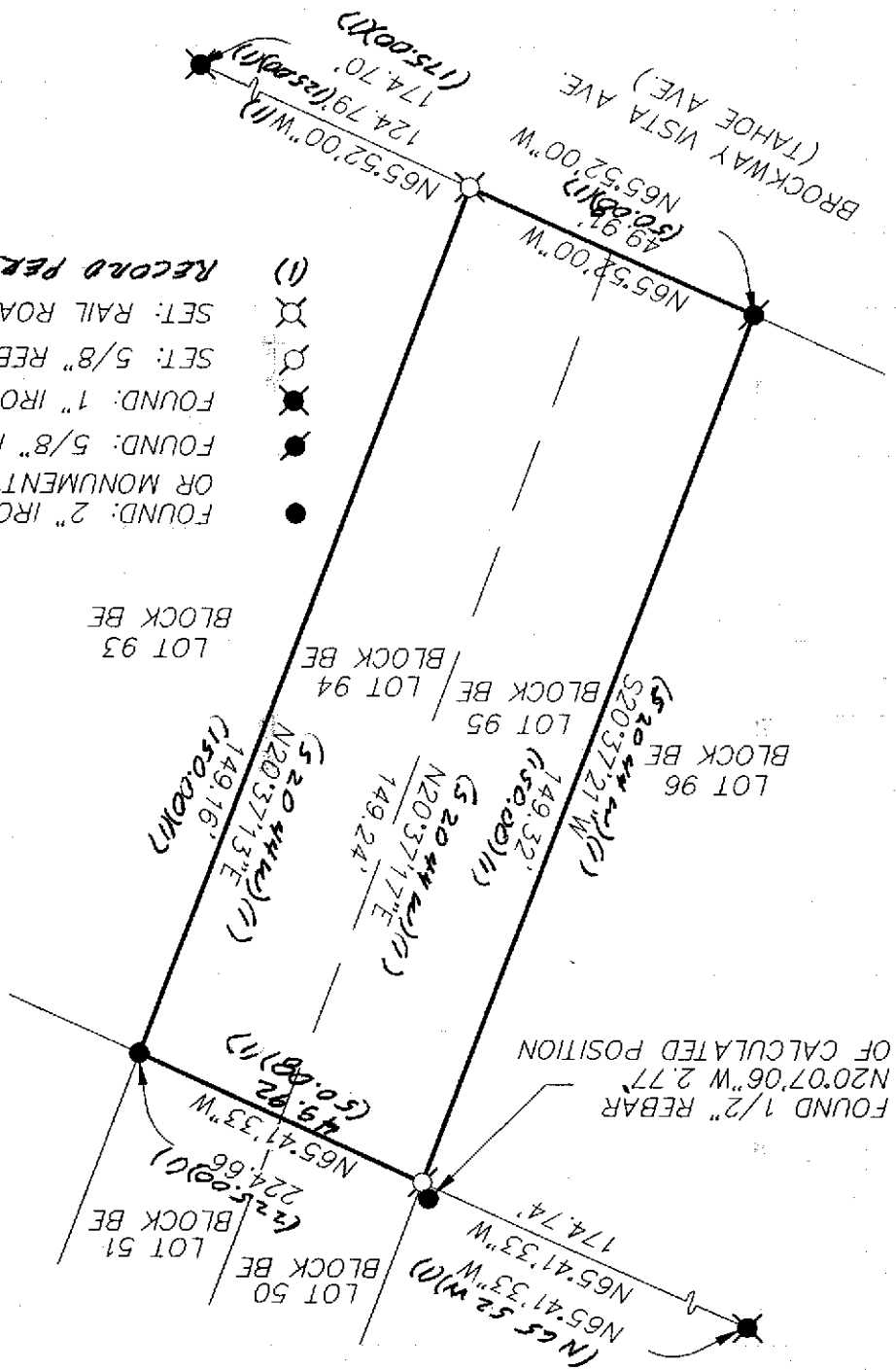
\_\_\_\_\_  
 \_\_\_\_\_  
 \_\_\_\_\_

Back 9 page 89

# PLAT OF SURVEY

LOTS 94 & 95, BLOCK BE, OF BROCKWAY VISTA SUBDIVISION  
 LOCATED IN BOOK D OF MAPS AT PAGE 16 O.R.P.C.  
 SECTION 19, TOWNSHIP 16 NORTH, RANGE 18 EAST, M.D.B. & M.  
 COUNTY OF PLACER  
 CALIFORNIA  
 SEPTEMBER, 1999

SCALE: 1" = 30'



BOOK 9 PAGE 89

- FOUND: 2" IRON PIPE (NO TAG)  
OR MONUMENT AS NOTED
  - FOUND: 5/8" REBAR (NO TAG)
  - FOUND: 1" IRON PIPE LS# 5549
  - SET: 5/8" REBAR LS# 7429
  - SET: RAIL ROAD SPIKE LS# 7429
- RECORD PER DMPS 16



J/N 945.00