

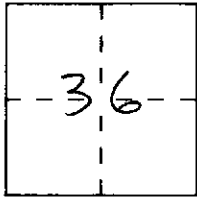
CORNER RECORD

Document Number _____

City of _____

County of Placer, California

Brief Legal Description Lot 3, Block 27 of Tahoe Pines Subd., Located in Section 36, T15N, R16E MDM D/maps/37



T15N
R16E

CORNER TYPE

Government Corner Control
Meander Property
Rancho Other
Date of Survey 9-23-99

COORDINATES (Optional)

N. _____
E. _____
Zone _____ Datum _____
Elev. _____

Corner — Left as found Found and tagged Established Reestablished Rebuilt

Identification and type of corner found: Evidence used to identify or procedure used to establish or reestablish the corner:

See Sketch on Back
Bearing-Bearing Intersection Between Found
Monuments To Re-establish N-E corner Lot 3
in Record Position

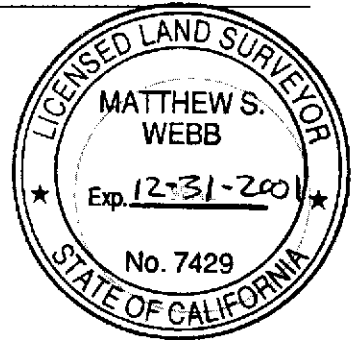
A description of the physical condition of the monument as found and as set or reset:

See Sketch on Back
Set 5/8" Rebar LS 7429

SURVEYOR'S STATEMENT

This Corner Record was prepared by me or under my direction in conformance with the Land Surveyors' Act on September 30 1999.

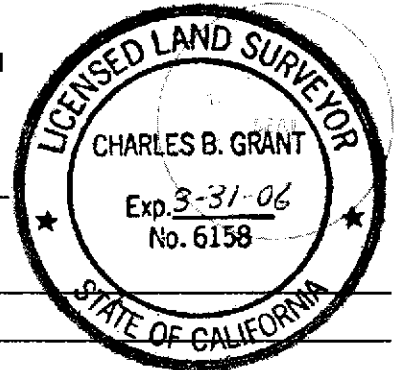
Signed Matthew S. Webb L.S. or R.C.E. Number 7429



COUNTY SURVEYOR'S STATEMENT

This Corner Record was received SEPT 30 1999 and examined and filed JUNE 17 2005 19 .

Signed Charles B. Grant Title DEPUTY COUNTY SURVEYOR
LS 6158

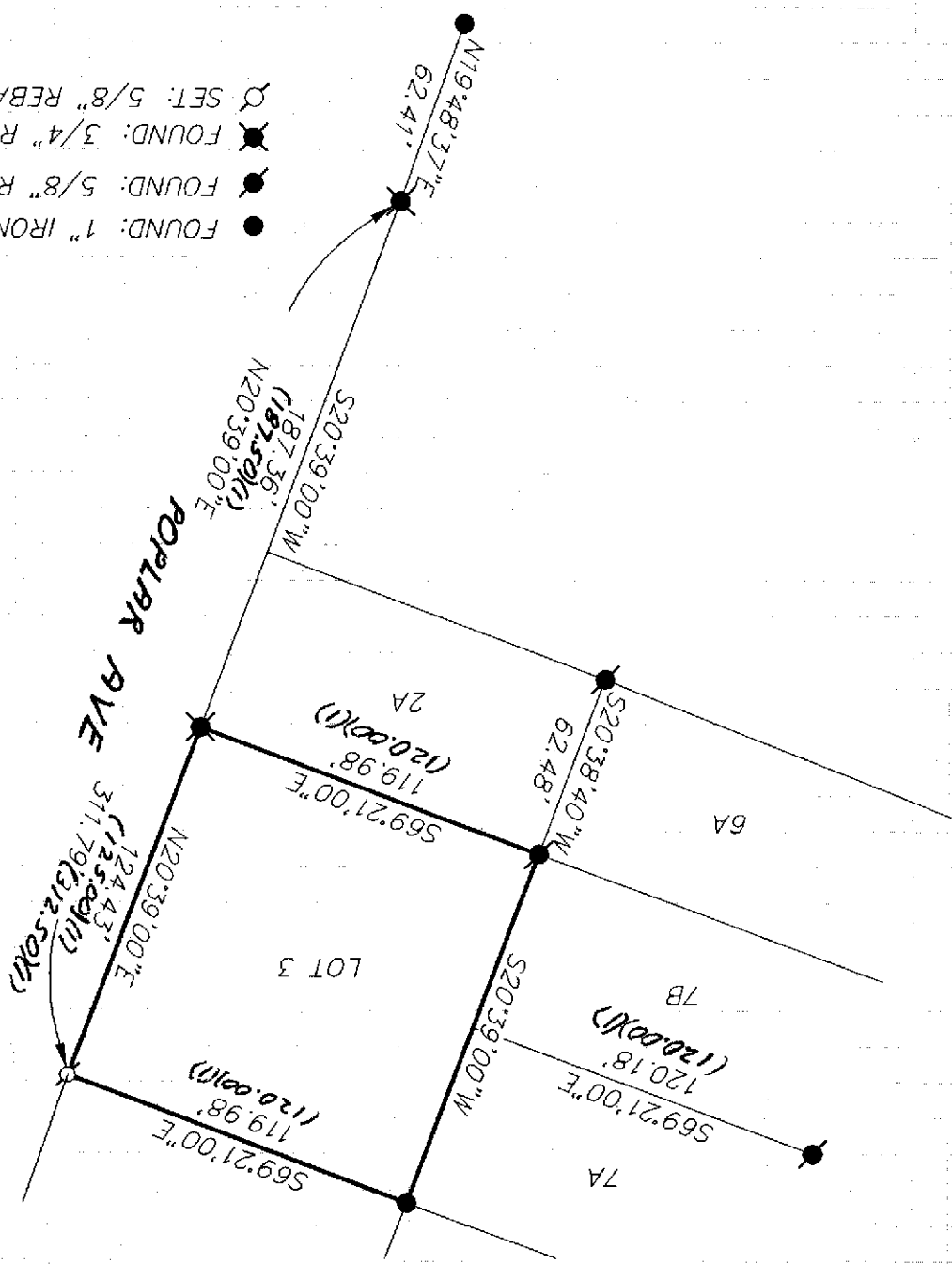


County Surveyor's Comment _____

BOOK 9 PAGE 90

PLAT OF SURVEY

LOT 3, BLOCK 27, OF TAHOE PINES SUBDIVISION
 LOCATED IN BOOK D OF MAPS AT PAGE 37 O.R.P.C.
 SECTION 36, TOWNSHIP 15 NORTH, RANGE 16 EAST, M.D.B. & M.
 COUNTY OF PLACER
 SCALE: 1" = 60'
 SEPTEMBER, 1999



- FOUND: 1" IRON PIPE (NO TAG)
- FOUND: 5/8" REBAR (NO TAG)
- ✕ FOUND: 3/4" REBAR (NO TAG)
- SET: 5/8" REBAR LS# 7429

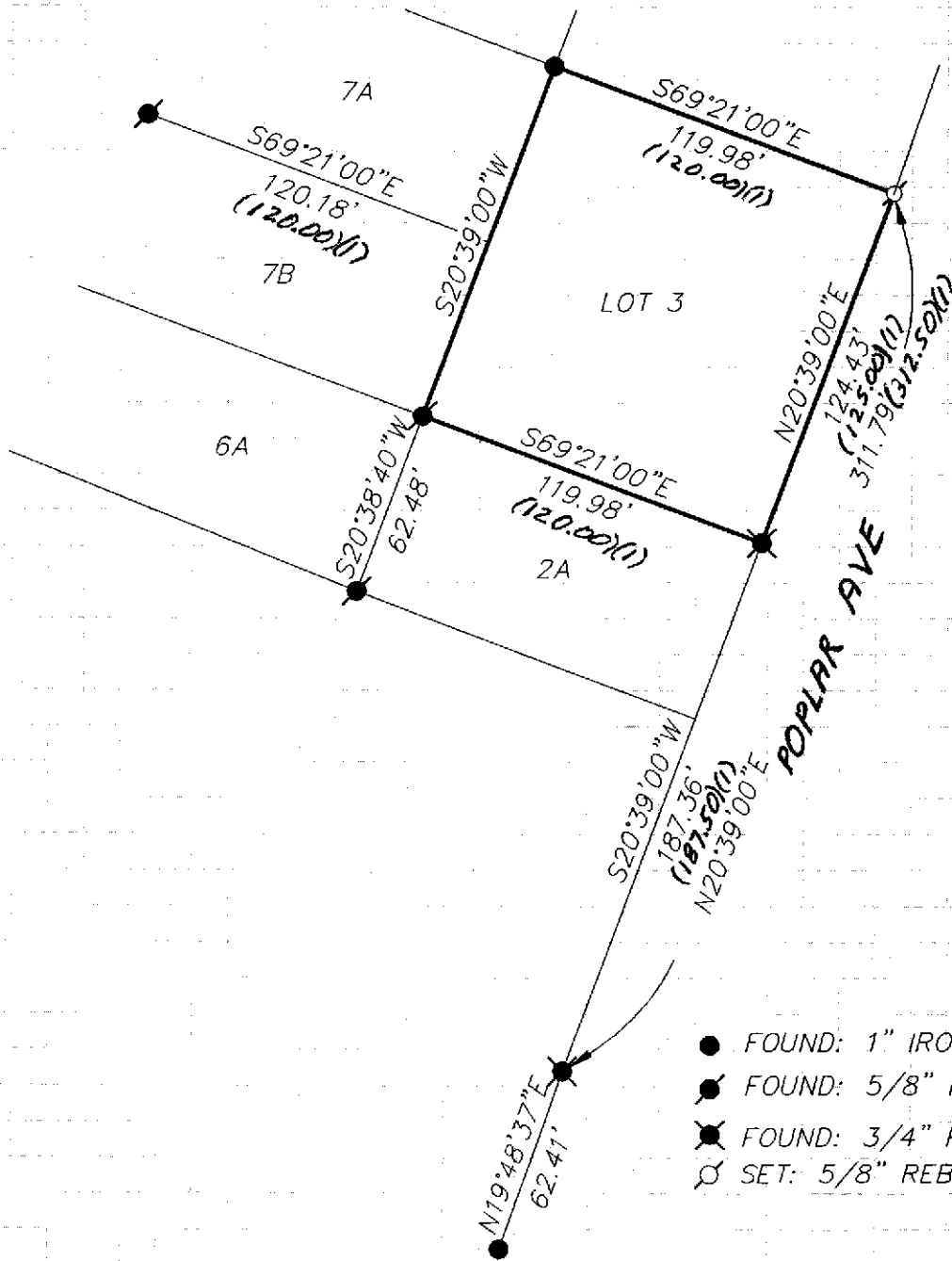


BOOK 9 PAGE 90

J/N 944.00

PLAT OF SURVEY

LOT 3, BLOCK 27, OF TAHOE PINES SUBDIVISION
 LOCATED IN BOOK D OF MAPS AT PAGE 37 O.R.P.C.
 SECTION 36, TOWNSHIP 15 NORTH, RANGE 16 EAST, M.D.B. & M.
 COUNTY OF PLACER CALIFORNIA
 SCALE: 1" = 60' SEPTEMBER, 1999



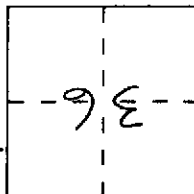
BOOK 9 PAGE 90

- FOUND: 1" IRON PIPE (NO TAG)
- ⊗ FOUND: 5/8" REBAR (NO TAG)
- ⊗ FOUND: 3/4" REBAR (NO TAG)
- ⊗ SET: 5/8" REBAR LS# 7429

J/N 944.00

CORNER RECORD

Document Number _____
 City of _____
 County of Placer, California
 Brief Legal Description Lot 3, Block 27 of Tahoe Pines Subd., located in Section 36, T15N, R16E MDM
 D/Maps/37



CORNER TYPE
 Government Corner
 Meander
 Property
 Other
 Control
 Rancho
 Date of Survey 9-23-99

COORDINATES (Optional)
 N. _____
 E. _____
 Zone _____
 Datum _____
 Elev. _____

Corner — Left as found Found and tagged Established Reestablished Rebuilt

Identification and type of corner found: Evidence used to identify or procedure used to establish or reestablish the corner:

See Sketch on Back
 Bearing-Bearing Intersection Between Found
 monuments TO RE-ESTABLISH A-F CORNER LOT 3
 IN REAR POSITION

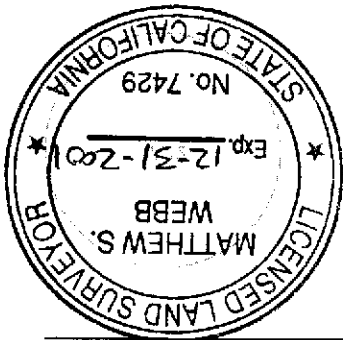
A description of the physical condition of the monument as found and as set or reset:

See Sketch on Back

SET 5/9" BEHR AS 7429

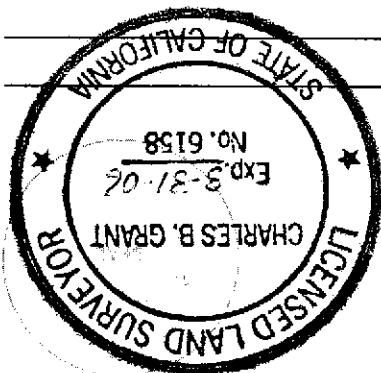
SURVEYOR'S STATEMENT

This Corner Record was prepared by me or under my direction in conformance with the Land Surveyors' Act on September 30 1999.
 Signed Matthew S. Webb L.S. or R.C.E. Number 7429



COUNTY SURVEYOR'S STATEMENT

This Corner Record was received SEPT 30 1999 and examined and filed JUNE 17 2005 19____.
 Signed Charles B. Grant
 Title DEPUTY COUNTY SURVEYOR LS 6158
 County Surveyor's Comment _____



BOOK 9 PAGE 90

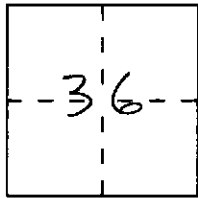
CORNER RECORD

Document Number _____

City of _____

County of Placer, California

Brief Legal Description Lot 3, Block 27, of Tahoe Pines Subd., Located in Section 36, T15N, R16E MDM D/maps/37



T15N
R16E

CORNER TYPE

Government Corner Control
 Meander Property
 Rancho Other
 Date of Survey 9-23-99

COORDINATES (Optional)

N. _____
 E. _____
 Zone _____ Datum _____
 Elev. _____

Corner — Left as found Found and tagged Established Reestablished Rebuilt

Identification and type of corner found: Evidence used to identify or procedure used to establish or reestablish the corner:

See Sketch on Back

Bearing-Bearing Intersection Between Found
 monuments TO RE-ESTABLISH N-E CORNER LOT 3
 IN ACCORD' POSITION

A description of the physical condition of the monument as found and as set or reset:

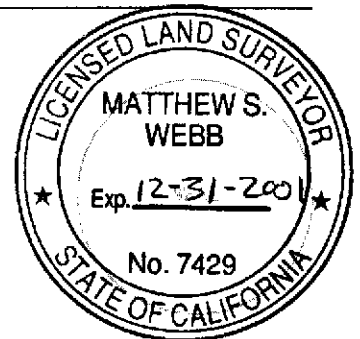
See Sketch on Back

SET 5/8" REBAR LS 7429

SURVEYOR'S STATEMENT

This Corner Record was prepared by me or under my direction in conformance with
 the Land Surveyors' Act on September 30 1999.

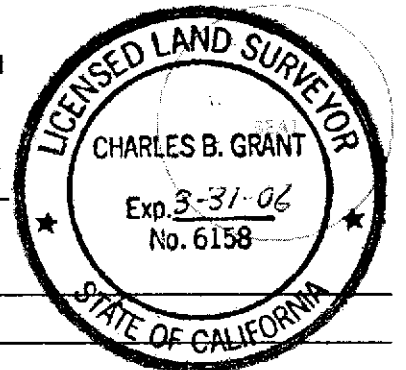
Signed Matthew S. Webb L.S. or R.C.E. Number 7429



COUNTY SURVEYOR'S STATEMENT

This Corner Record was received SEPT 30 1999 and examined
 and filed JUNE 17 2005 19 .

Signed Charles B. Grant Title DEPUTY COUNTY SURVEYOR
LS 6158

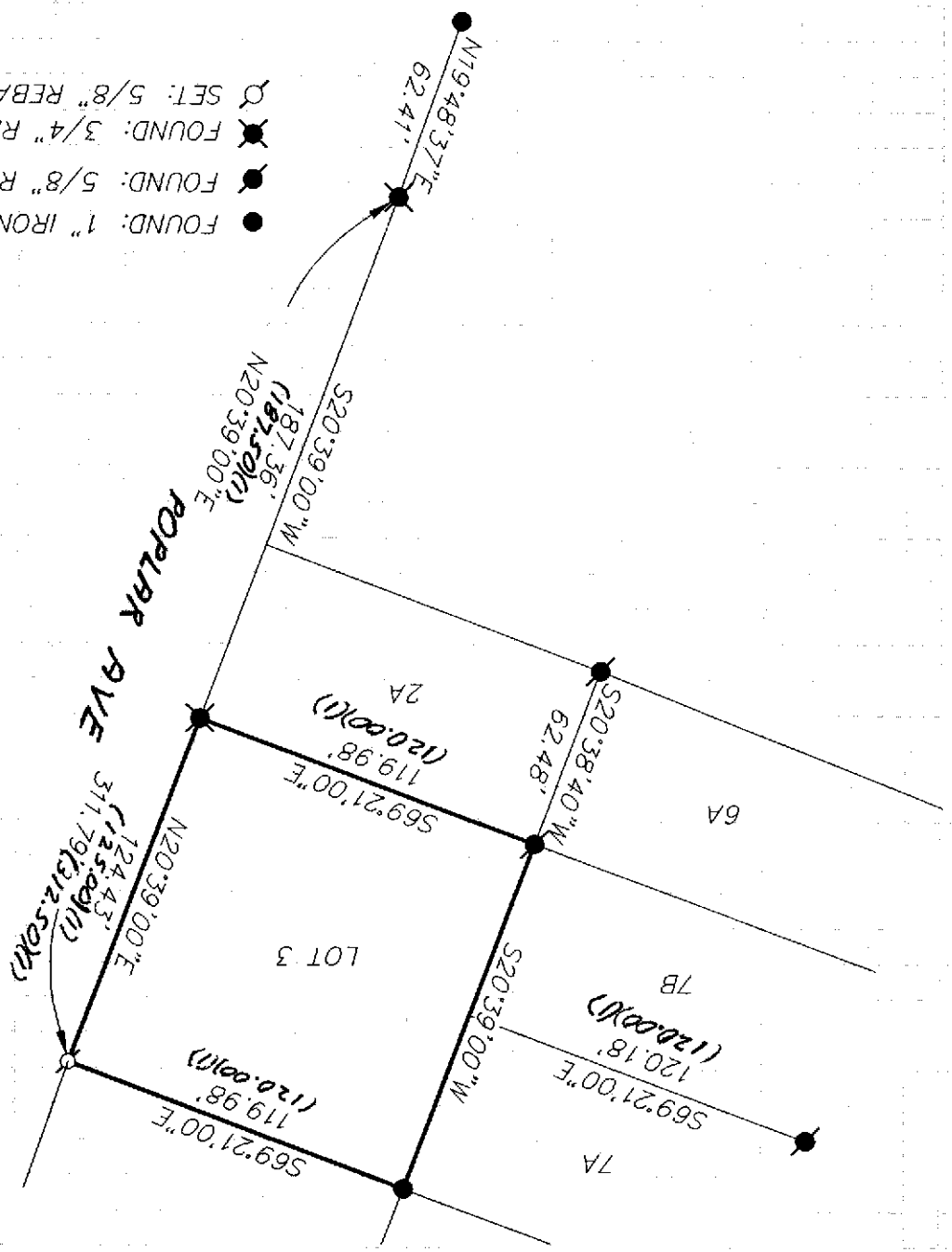


County Surveyor's Comment _____

BOOK 9 PAGE 90

PLAT OF SURVEY

LOT 3, BLOCK 27, OF TAHOE PINES SUBDIVISION
 LOCATED IN BOOK D OF MAPS AT PAGE 37 O.R.P.C.
 SECTION 36, TOWNSHIP 15 NORTH, RANGE 16 EAST, M.D.B. & M.
 COUNTY OF PLACER
 CALIFORNIA
 SCALE: 1" = 60'
 SEPTEMBER, 1999



- FOUND: 1" IRON PIPE (NO TAG)
- FOUND: 5/8" REBAR (NO TAG)
- ✕ FOUND: 3/4" REBAR (NO TAG)
- SET: 5/8" REBAR LS# 7429

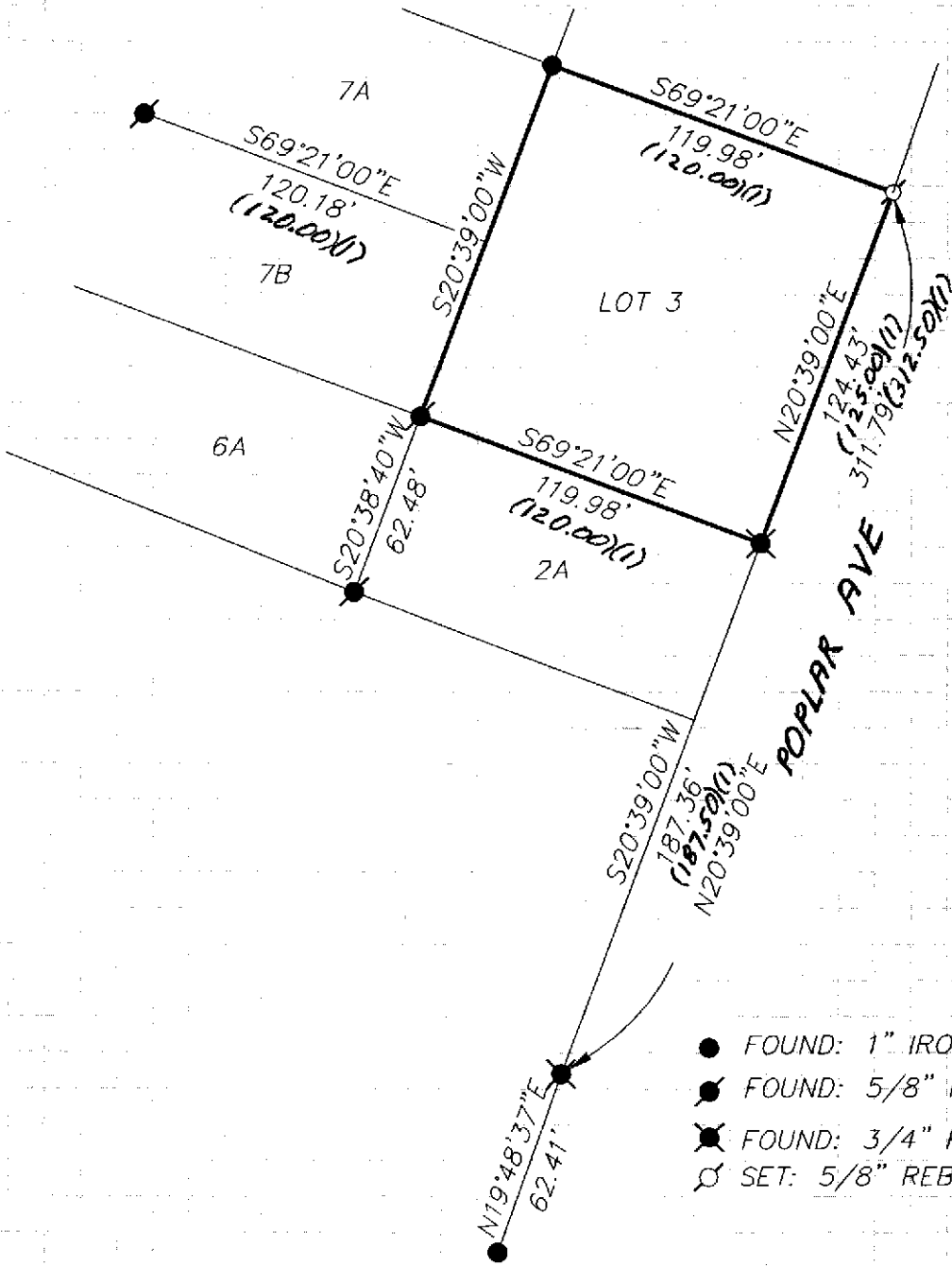


BOOK 9 PAGE 90

J/N 944.00

PLAT OF SURVEY

LOT 3, BLOCK 27, OF TAHOE PINES SUBDIVISION
 LOCATED IN BOOK D OF MAPS AT PAGE 37 O.R.P.C.
 SECTION 36, TOWNSHIP 15 NORTH, RANGE 16 EAST, M.D.B. & M.
 COUNTY OF PLACER CALIFORNIA
 SCALE: 1" = 60' SEPTEMBER, 1999

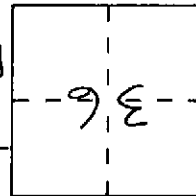


J/N-944.00

BOOK 9 PAGE 90

CORNER RECORD

Document Number _____
 City of _____
 County of Placer, California
 Brief Legal Description: Lot 3, Block 27, of Tahoe Pines Subd., located in Section 36, T15N, R16E MDM
 D/maps/37



CORNER TYPE

- Date of Survey 9-23-99
- Government Corner
 Meander
 Property
 Control
 Other

COORDINATES

N. _____
 E. _____
 Zone _____ Datum _____
 Elev. _____

Corner — Left as found Found and tagged Established Reestablished Rebuilt

Identification and type of corner found: Evidence used to identify or procedure used to establish or reestablish the corner:

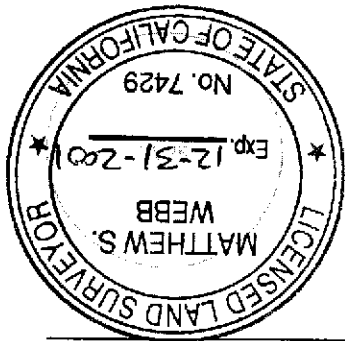
See Sketch on Back
 Bearing-Bearing Intersection Between Found
 monuments to RE-ESTABLISH A/E CORNER LOT 3
 IN ATTENDANT POSITION

A description of the physical condition of the monument as found and as set or reset:

See Sketch on Back
 SET 5/2" BEHR AS 7429

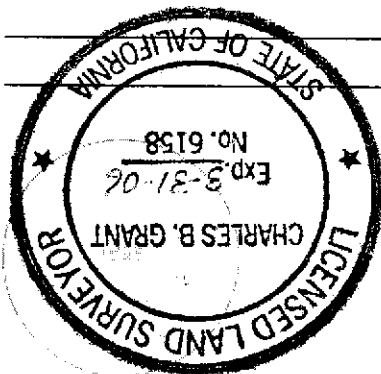
SURVEYOR'S STATEMENT

This Corner Record was prepared by me or under my direction in conformance with the Land Surveyors' Act on September 30, 1999.
 Signed Matthew S. Webb L.S. or R.C.E. Number 7429



COUNTY SURVEYOR'S STATEMENT

This Corner Record was received SEPT 30 1999 and examined and filed JUNE 17 2005 19____
 Signed Charles B. Grant Title DEPUTY COUNTY SURVEYOR License No. 6158
 County Surveyor's Comment _____



BOOK 9 PAGE 90