

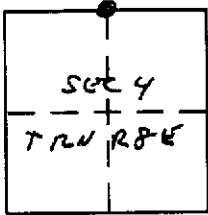
CORNER RECORD

Document Number \_\_\_\_\_

City of N/A

County of PLACER, California

Brief Legal Description 1/4 COR COMMON TO SEC 33, T13N, R8E AND TO SEC 4, T12N, R8E



CORNER TYPE

Government Corner  Control   
Meander  Property   
Rancho  Other   
Date of Survey JULY 2005

COORDINATES (Optional)

N. \_\_\_\_\_  
E. \_\_\_\_\_  
Zone \_\_\_\_\_ NAD27  NAD83   
NAD83 Epoch \_\_\_\_\_  
Elev. \_\_\_\_\_  
Vert. Datum: NGVD29  NAVD88   
Meas. Units: Metric  Imperial

Corner - Left as found  Found and tagged  Established  Reestablished  Rebuilt

Identification and type of corner found: Evidence used to identify or procedure used to establish or reestablish the corner:

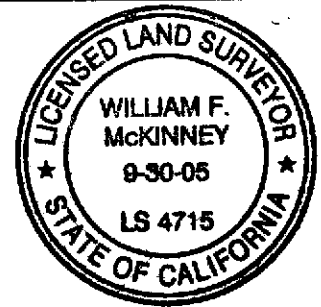
REESTABLISHED CORNER PER TIE SHOWN ON 14 RS 120

A description of the physical condition of the monument as found and as set or reset: ORIGINAL CORNER DESTROYED BY CONSTRUCTION. RESET CORNER IS A 2 1/2" BRASS CAP STAMPED FOR CORNER AS SHOWN ON THE EXHIBIT MAP SHOWN ON THE REVERSE SIDE OF THIS PAGE AND CEMENTED INTO A 1" IRON PIPE.

SURVEYOR'S STATEMENT

This Corner Record was prepared by me or under my direction in conformance with the Land Surveyor's Act on JULY 11, 2005

Signed William F. McKinney P.L.S. or R.C.E. No. PLS 4715



COUNTY SURVEYOR'S STATEMENT

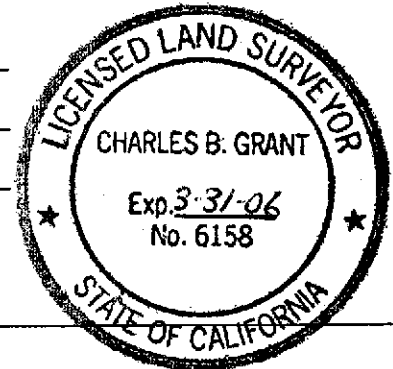
This Corner Record was received JULY 15, 2005

and examined and filed JULY 19 2005

Signed Charles B. Grant P.L.S. or R.C.E. No. LS 6158

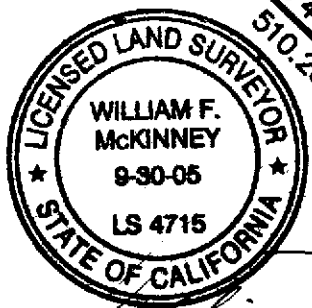
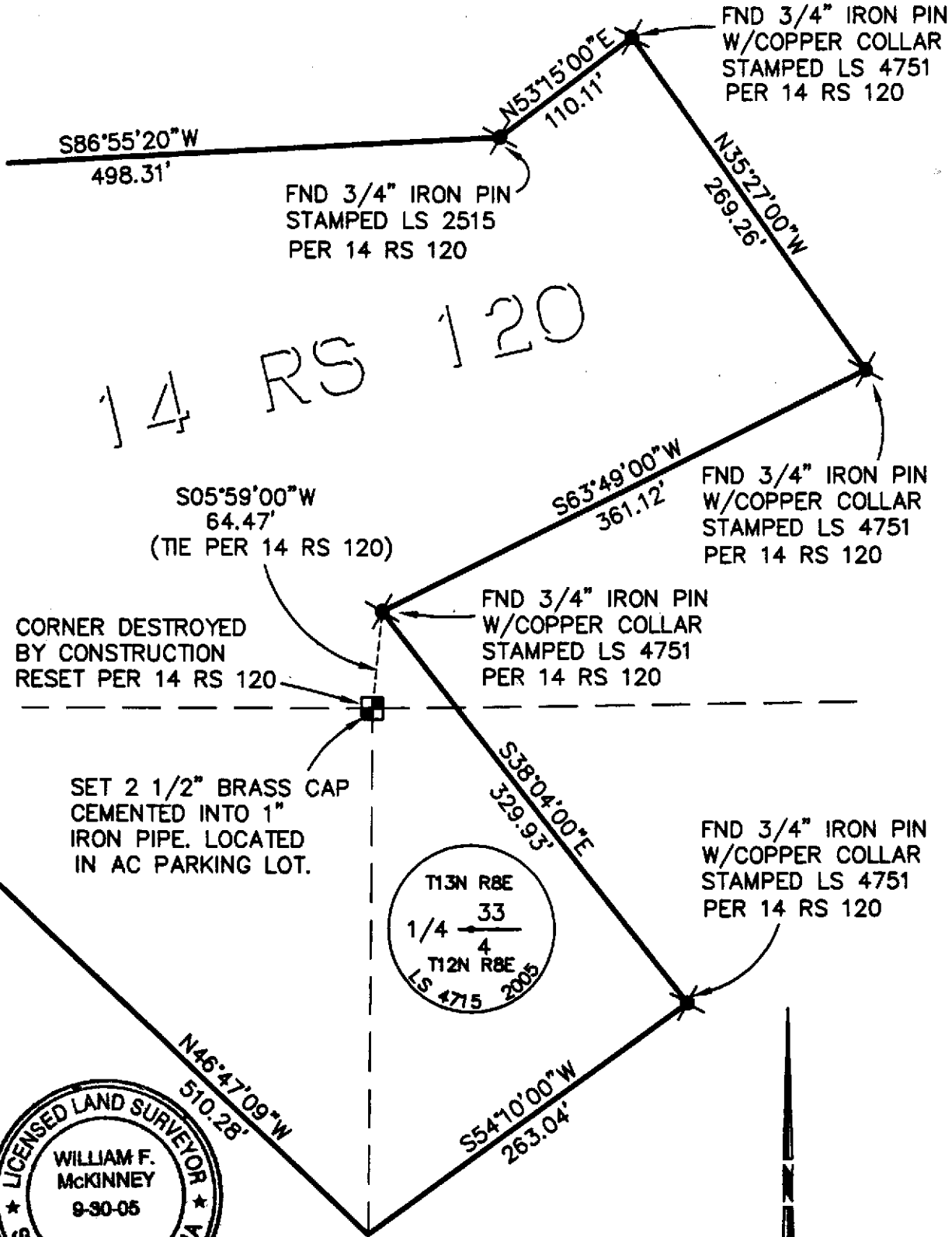
Title DEPUTY COUNTY SURVEYOR

County Surveyor's Comment \_\_\_\_\_



BOOK 9 CORNER RECORDS PAGE 97

14 RS 120



*William F. McKinney*  
 JULY 11, 2005

SCALE: 1"=100'