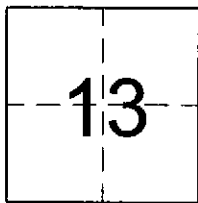


CORNER RECORD

Document Number \_\_\_\_\_

City of \_\_\_\_\_ County of Placer, California

Brief Legal Description LOT 36, AMENDED MAP OF LAKE TAHOE PARK, D/MAPS/17



**CORNER TYPE**

T15N Government Corner  Control   
 Meander  Property   
 R16E Rancho  Other   
 Date of Survey 06-02-05

**COORDINATES (Optional)**

N: \_\_\_\_\_  
 E: \_\_\_\_\_  
 Zone \_\_\_\_\_ NAD27  NAD83   
 NAD83 Epoch \_\_\_\_\_  
 Elev. \_\_\_\_\_  
 Vert. Datum: NGVD29  NAVD88   
 Meas. Units: Metric  Imperial

Corner - Left as found  Found and tagged  Established  Reestablished  Rebuilt

Identification and type of corner found: Evidence used to identify or procedure used to establish or reestablish the corner:  
See sketch on back.

Found 1" iron pipe in record position at the Northeast corner of Lot 36, Amended Map of Lake Tahoe Park, D/Maps/17. Found 5/8" rebar at Southast corner of Lot 36 in record position.

A description of the physical condition of the monument as found and as set or reset:  
See sketch on back.

Set 5/8" rebar tagged LS 6819 in record location.

SURVEYOR'S STATEMENT

This Corner Record was prepared by me or under my direction in conformance with the Land Surveyor's Act on July 20th, 2005

Signed Keith D. Masuda P.L.S. No. 6819



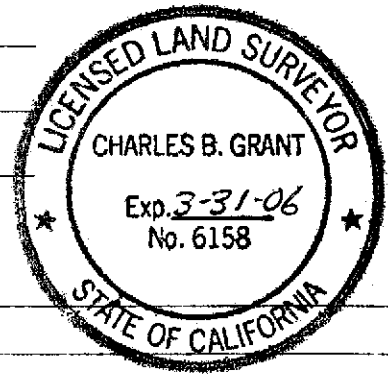
COUNTY SURVEYOR'S STATEMENT

This Corner Record was received AUGUST 5TH 2005 and examined and filed, AUGUST 23 2005

Signed Charles B. Grant P.L.S. or R.C.E. No. LS 6158

Title, DEPUTY COUNTY SURVEYOR

County Surveyor's Comment \_\_\_\_\_



BOOK 9 CORNER RECORDS PAGE 99

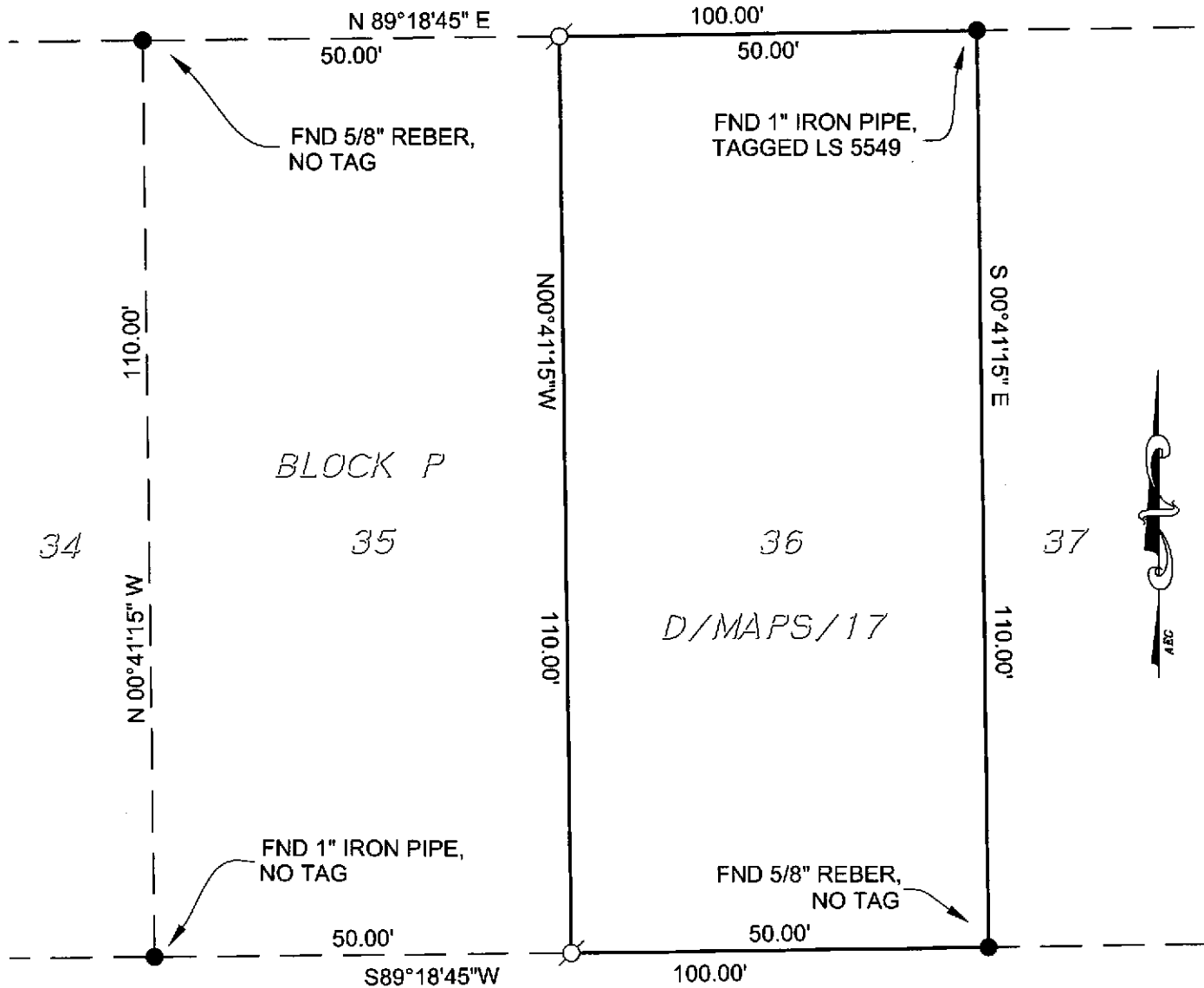
# PLAT OF SURVEY

LOT 36 OF BLOCK P OF AMENDED LAKE TAHOE PARK, D/MAPS/17, P.C.R.  
SECTION 13, TOWNSHIP 15 NORTH, RANGE 16 EAST, M.D.M.

COUNTY OF PLACER  
SCALE: 1" = 20'

CALIFORNIA  
JULY 20, 2004

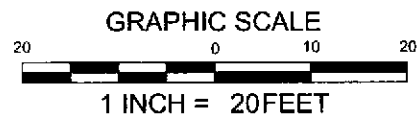
FOUNTAIN, ~~AVENUE~~



BOOK 9 CORNER RECORDS PAGE 99

## LEGEND

- FOUND MONUMENTS AS NOTED
- NOTHING FOUND, NOTHING SET
- ⊙ SET 5/8" REBAR TAGGED LS 6819



ALL DIMENSIONS ARE PER D/MAPS/17  
NO MATERIAL DISCREPANCY WERE FOUND PER SAID MAP