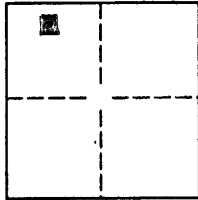


City of Unincorporated

Document Number \_\_\_\_\_

County of Placer, California

Brief Legal Description Lot 34, Saddleback Tract 431 M/Maps/23



Sec 21  
T13N  
R08E  
M.D.M.

**CORNER TYPE**

Government Corner  Control   
 Meander  Property   
 Rancho  Other

Date of Survey February 2003

**COORDINATES(Optional)**

N. \_\_\_\_\_  
 E. \_\_\_\_\_  
 Zone NAD27  NAD83   
 NAD83 Epoch \_\_\_\_\_  
 Elevation \_\_\_\_\_  
 Vert. Datum: NGVD29  NAV88   
 Meas. Units: Metric  Imperial

Corner - Left as found  Found and tagged  Established  Reestablished  Rebuilt

Identification and type of corner found: Evidence used to identify or procedure used to establish or reestablish the corner:

see sketch on reverse  
found record monumentation per M/Maps/23

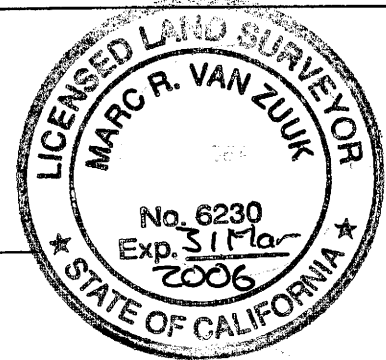
A description of the physical condition of the monument as found and as set or reset:

see sketch on reverse  
SET 34 REBUILT TAGGED LS 6230

**SURVEYOR'S STATEMENT**

This Corner Record was prepared by me or under my direction in conformance with the Land Surveyor's Act on 01 April, 04.

Signed [Signature] P.L.S. or R.C.E. Number 6230



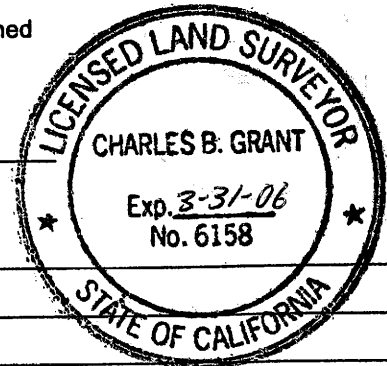
**COUNTY SURVEYOR'S STATEMENT**

This Corner Record was received APRIL 8, 2004 and examined and filed MAY 11, 2004.

Signed [Signature] P.L.S. or R.C.E. Number LS 6158

Title DEPUTY COUNTY SURVEYOR

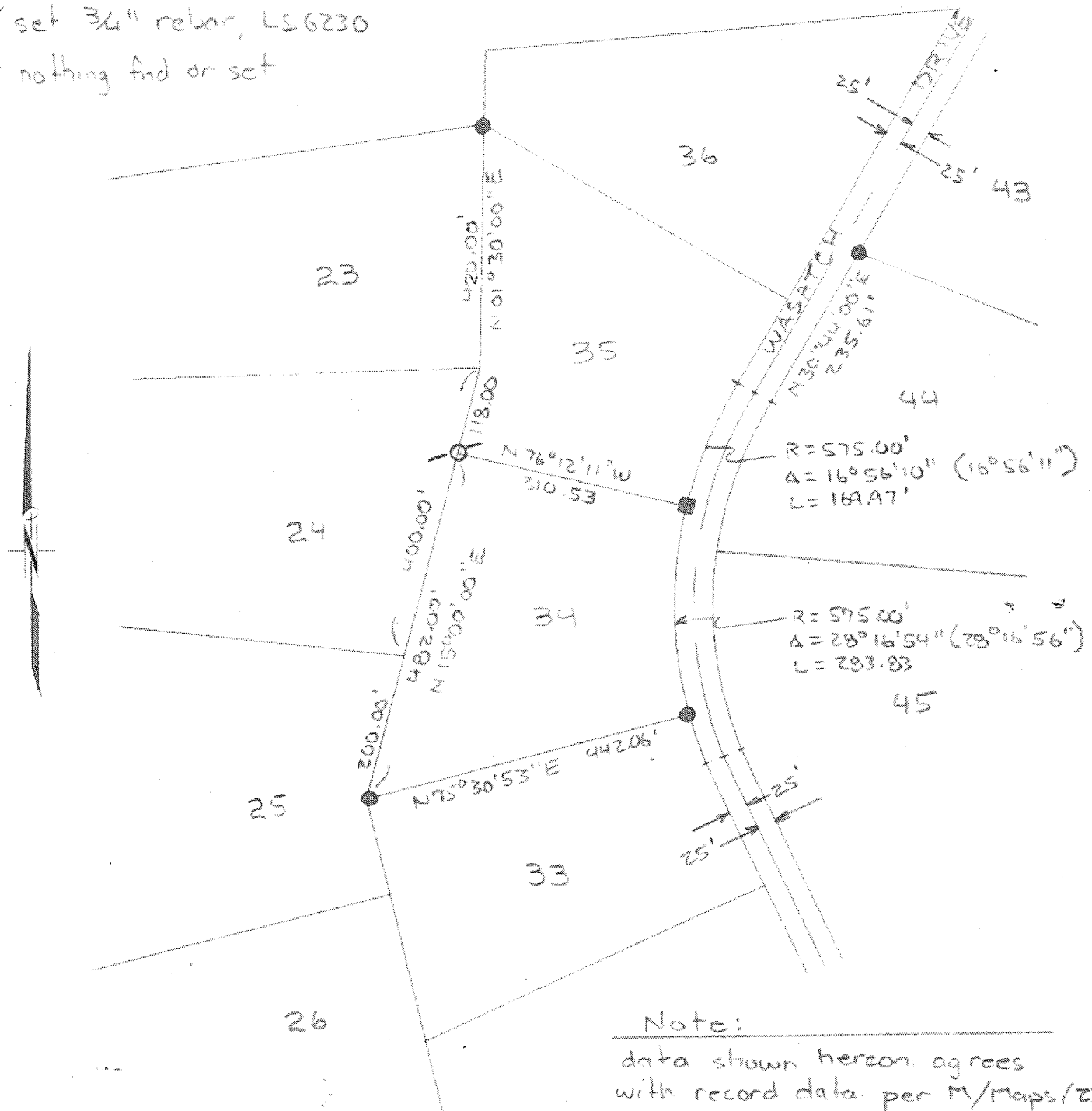
County Surveyor's Comment \_\_\_\_\_



BOOK 9 CORNER RECORDS PG 9

Legend

- find 3/4" rebar, LS2901 per M/Maps/23
- find tag LS2901, glued to rock
- set 3/4" rebar, LS6230
- ∟ nothing find or set



BM 9 PG 9

Note:  
 data shown hereon agrees with record data per M/Maps/23 except the curve data where the record data is shown thus (record)



W.O. 03001 Gerald Mitsuda

**AUBURN SURVEYORS**

POST OFFICE BOX 3296  
 AUBURN, CALIFORNIA 95604  
 ph: 530/889-2121  
 fx: 530/889-2632

**EXHIBIT B**

Lot 34, Saddleback Tract 431  
 Section 21, T13N, R08E, M.O.M.

SHEET

OF 1