

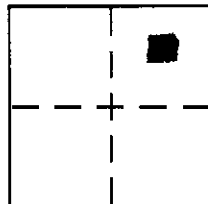
CORNER RECORD

Document Number _____

City of _____

County of Placer, California

Brief Legal Description Lot 116, Lake Forest unit #2, BK D. Maps PG. 33
O.R.P.L.



SEC. 28
T. 16 N
R. 17 E
MD 04 M

CORNER TYPE

Government Corner Control
Meander Property
Rancho Other
Date of Survey 6-10-04

COORDINATES (Optional)

N. _____
E. _____
Zone NAD27 NAD83
NAD83 Epoch _____
Elev. _____
Vert. Datum: NGVD29 NAVD88
Meas. Units: Metric Imperial

Corner - Left as found Found and tagged Established Reestablished Rebuilt

Identification and type of corner found: Evidence used to identify or procedure used to establish or reestablish the corner:

See sketch on Back

FOUND AS NOTED - USED TO RESET S. EASTLY
CORNER LOT 116 IN RECORD POSITION

A description of the physical condition of the monument as found and as set or reset:

See sketch on Back

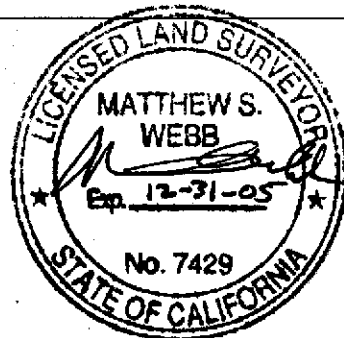
SET 3/4" REBAR LS 7429

SURVEYOR'S STATEMENT

This Corner Record was prepared by me or under my direction in conformance with

the Land Surveyor's Act on June 18, 2004

Signed [Signature] P.L.S or R.C.E. No. 7429



COUNTY SURVEYOR'S STATEMENT

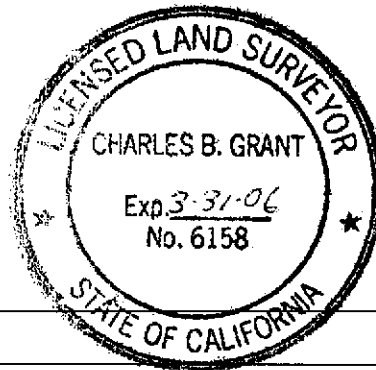
This Corner Record was received JUNE 21, 2004

and examined and filed JUNE 28 2004

Signed [Signature] P.L.S or R.C.E. No. LS 6158

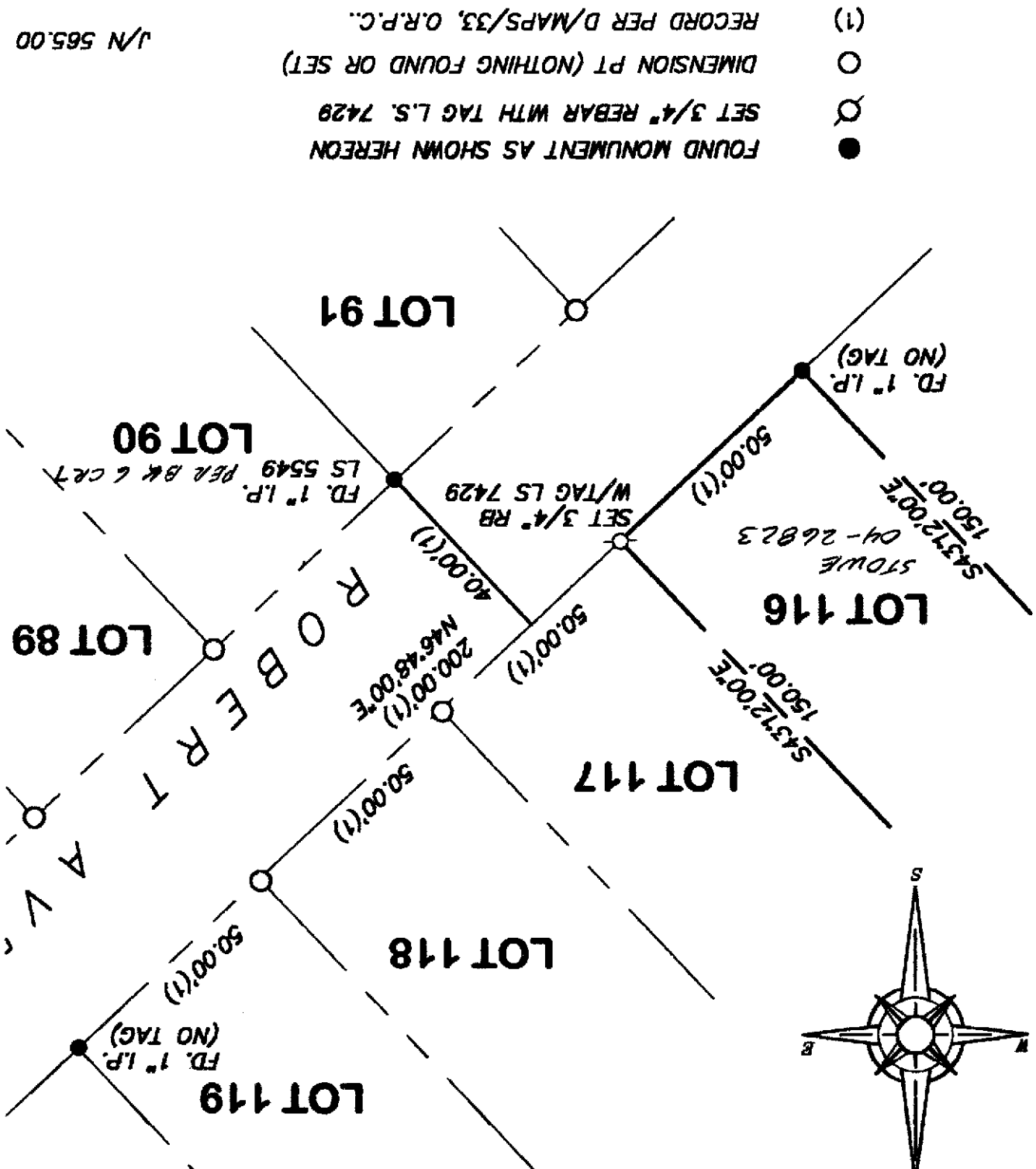
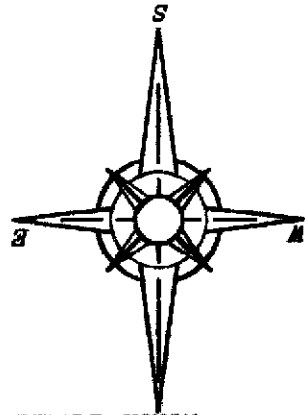
Title DEPUTY COUNTY SURVEYOR

County Surveyor's Comment _____



BOOK 9 CORNER RECORDS PG 16

PLAT OF SURVEY
LOT 116, LAKE FOREST UNIT 2 SUBDIVISION, BOOK
D, AT PAGE 33, OFFICIAL RECORDS PLACER
COUNTY CALIFORNIA, FOR S.W. 1/4 SECTION
28, TOWNSHIP 16, N., RANGE 17, E., M.D.B.&M.
NORTH SCALE 1" = 30' DATE OF SURVEY 6/10/2004



- FOUND MONUMENT AS SHOWN HEREON
- SET 3/4" REBAR WITH TAG L.S. 7429
- DIMENSION PT (NOTHING FOUND OR SET)
- (1) RECORD PER D/MAPS/33, O.R.P.C.

J/N 565.00