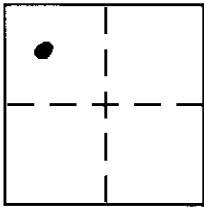


CORNER RECORD

Document Number _____

City of UNINCORPORATED AREA County of PLACER, California

Brief Legal Description LOTS 1-4 BLOCK "P" BROCKWAY VISTA SUB.
BOOK "D" OF MAPS PAGE 16 P.C.R.



S1/4 SEC. 19
T. 16 N.
R. 18 E.
M.D.M.

CORNER TYPE

Government Corner Control
Meander Property
Rancho Other
Date of Survey 4/23/04

COORDINATES (Optional)

N. _____
E. _____
Zone _____ NAD27 NAD83
NAD83 Epoch _____
Elev. _____
Vert. Datum: NGVD29 NAVD88
Meas. Units: Metric Imperial

Corner - Left as found Found and tagged Established Reestablished Rebuilt

Identification and type of corner found: Evidence used to identify or procedure used to establish or reestablish the corner:

- = FOUND 1/2" GALV. IRON PIPE, NO TAG
- ⊗ = FOUND 1/2" REBAR, NO TAG
- ⊙ = FOUND 3/4" IRON PIPE W/PLASTIC PLUG, L.S. 5549, 3/C.R./2

A description of the physical condition of the monument as found and as set or reset:

- ⊙ = SET 1" IRON PIPE W/PLASTIC PLUG, L.S. 5549

JN 04040

SURVEYOR'S STATEMENT

This Corner Record was prepared by me or under my direction in conformance with the Land Surveyor's Act on APRIL 30 2004

Signed Charles R. Sage P.L.S. or R.C.E. No. L.S. 5549
LIC. EXP. 6/30/05

COUNTY SURVEYOR'S STATEMENT

This Corner Record was received AUGUST 17 2004

and examined and filed SEPTEMBER 1 2004

Signed Charles B. Grant P.L.S. or R.C.E. No. LS 6158

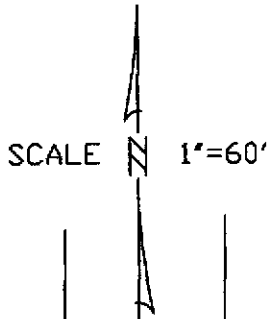
Title DEPUTY COUNTY SURVEYOR

County Surveyor's Comment _____

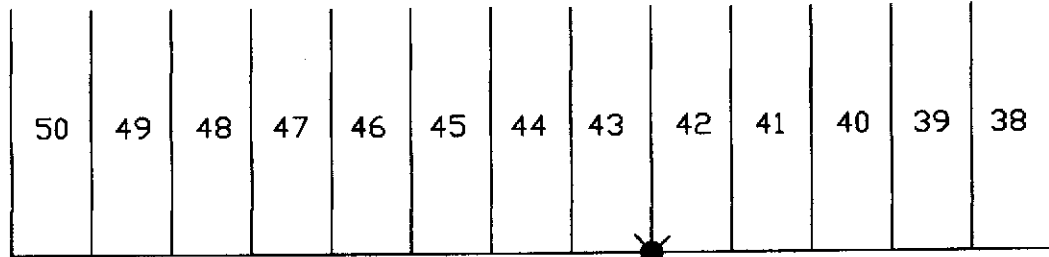


BOOK 5 CORNER RECORDS PG 20

NOTE: THE BEARINGS & DISTANCES SHOWN ARE RECORD PER D/MAPS/16 P.C.R.
 NO MATERIAL DISCREPANCIES WITH RECORD INFORMATION WERE FOUND.

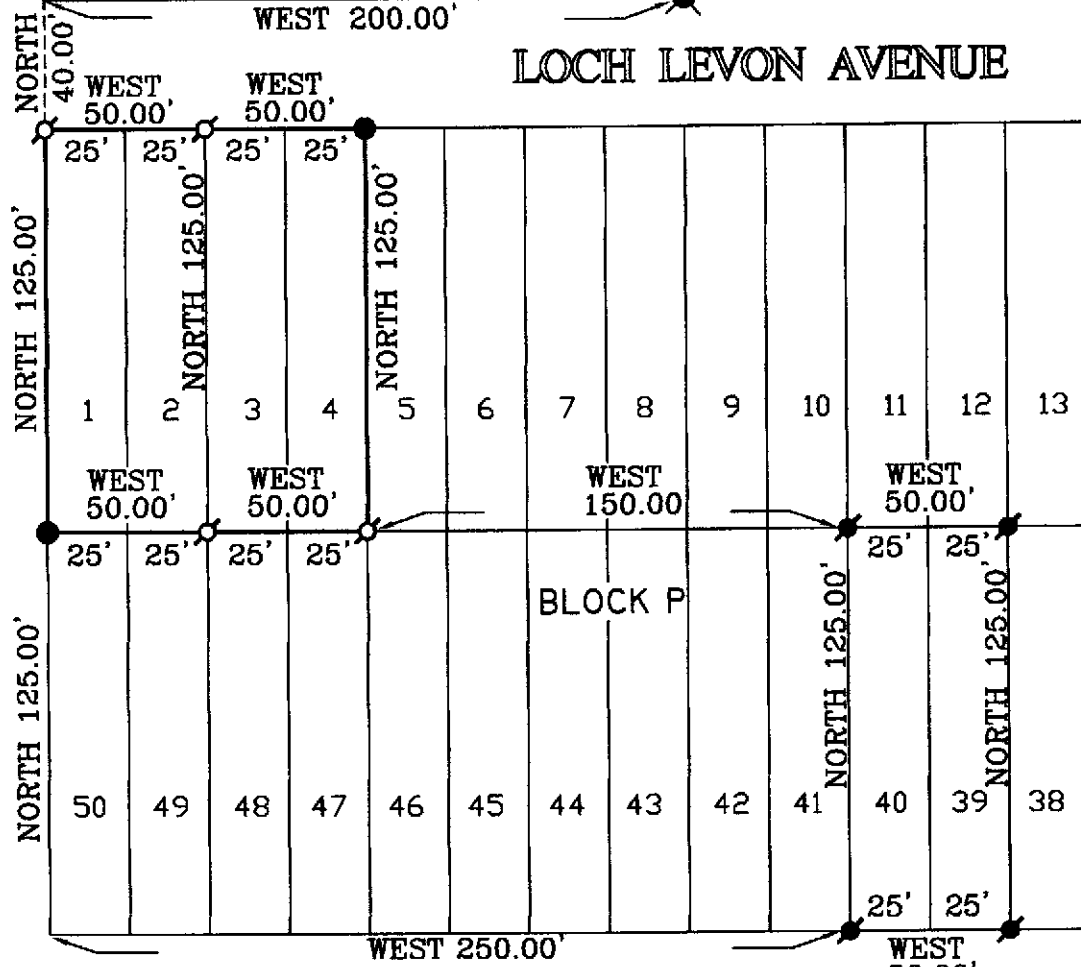


BLOCK S



LOCH LEVON AVENUE

DEER STREET



BLOCK P

STEELHEAD AVENUE

BLOCK M

B79 PL 20