

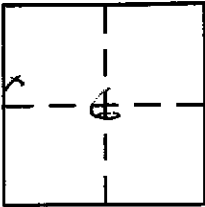
CORNER RECORD

Document Number _____

City of UNINCORPORATED

County of PLAHER, California

Brief Legal Description LOT 24 N-MAB-77 PTN NW 1/4 SEC 6 T13N R10E M.D.M.



CORNER TYPE

- Government Corner Control
- Meander Property
- Rancho Other
- Date of Survey 5-24-04

COORDINATES (Optional)

- N. _____
- E. _____
- Zone _____ NAD27 NAD83
- NAD83 Epoch _____
- Elev. _____
- Vert. Datum: NGVD29 NAVD88
- Meas. Units: Metric Imperial

Corner - Left as found Found and tagged Established Reestablished Rebuilt

Identification and type of corner found: Evidence used to identify or procedure used to establish or reestablish the corner:

FUP 3/4" REBAR, TAGGED R6E 11171 RESET MISSING MON'T

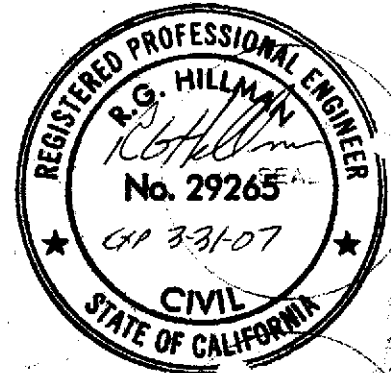
A description of the physical condition of the monument as found and as set or reset: RESET MISSING MON'T

w/ 3/4" REBAR w/ PLASTIC CAP STAMPED R6E 29265 IN RECORD POSITION

SURVEYOR'S STATEMENT

This Corner Record was prepared by me or under my direction in conformance with the Land Surveyor's Act on 6-24-04

Signed R.G. Hillman P.L.S or R.C.E. No. REE29265



COUNTY SURVEYOR'S STATEMENT

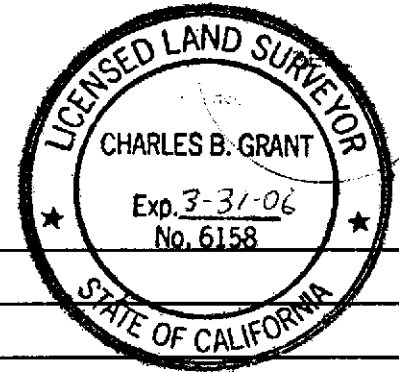
This Corner Record was received AUGUST 19 2004

and examined and filed SEPTEMBER 1, 2004

Signed Charles B. Grant P.L.S or R.C.E. No. LS 6158

Title DEPUTY COUNTY SURVEYOR

County Surveyor's Comment _____

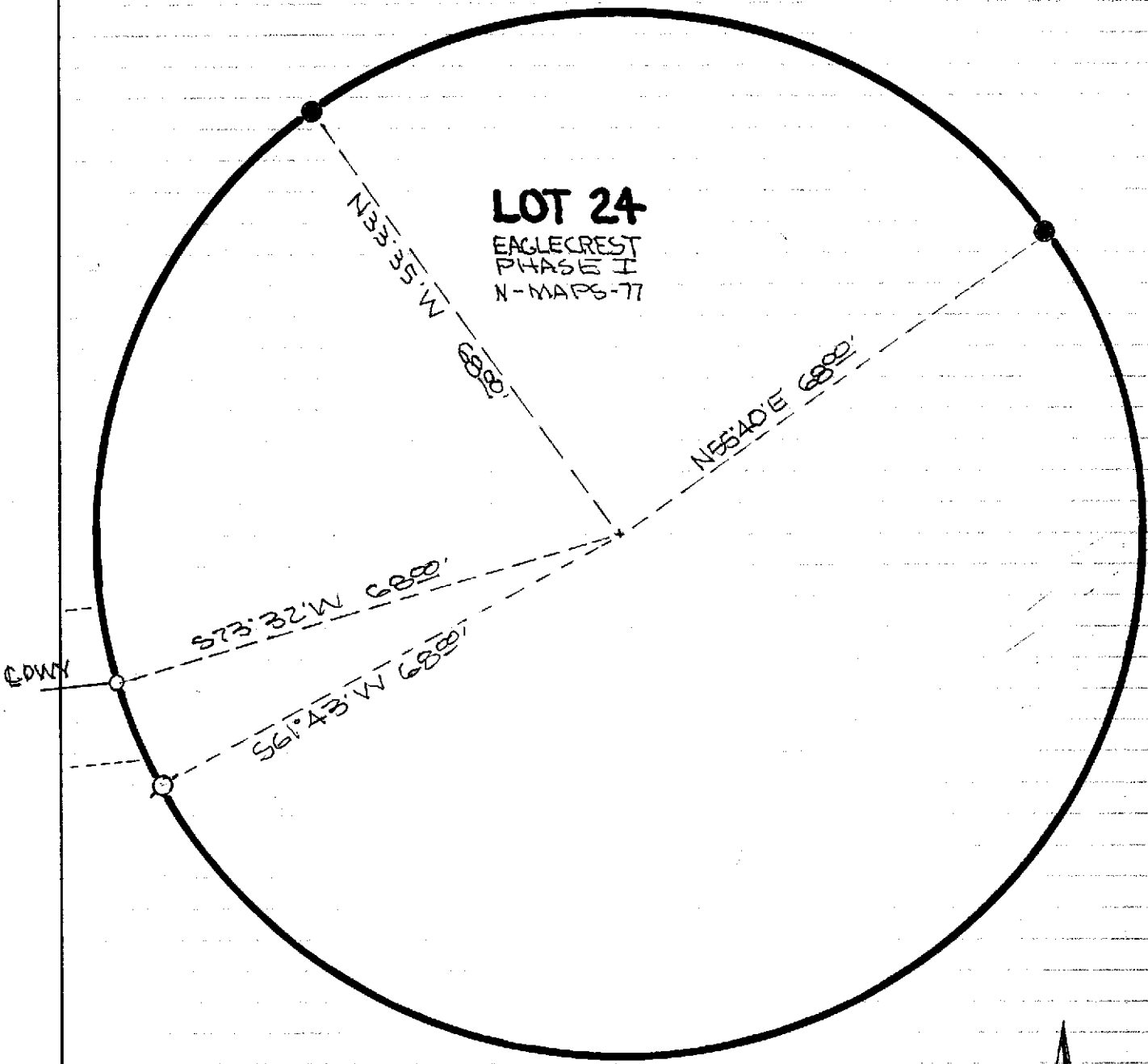


BOOK 9 CORNER RECORDS PG 23

COMMON AREA

LOT 24

EAGLECREST
PHASE I
N-MAPS-77



- FND. 3/4" REBAR TAGGED RCE 11171
- SET 3/4" REBAR W/ PLASTIC CAP STAMPED RCE 29265
- NOTHING FND, NOTHING SET



BH 9 PC 23