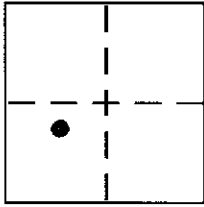


**CORNER RECORD**

Document Number \_\_\_\_\_

City of UNINCORPORATED AREA County of PLACER, California

Brief Legal Description LOT 93 CONSTOCK ACRES SUBDIVISION  
BOOK "F" OF MAPS PAGE 53 P.C.R.



SEC 7  
T15N  
R17E  
110M

**CORNER TYPE**

Government Corner  Control   
Meander  Property   
Rancho  Other   
Date of Survey 6/2/04

**COORDINATES (Optional)**

N. \_\_\_\_\_  
E. \_\_\_\_\_  
Zone \_\_\_\_\_ NAD27  NAD83   
NAD83 Epoch \_\_\_\_\_  
Elev. \_\_\_\_\_  
Vert. Datum: NGVD29  NAVD88   
Meas. Units: Metric  Imperial

Corner - Left as found  Found and tagged  Established  Reestablished  Rebuilt

Identification and type of corner found: Evidence used to identify or procedure used to establish or reestablish the corner:

● = FOUND 1/2" REBAR, NO TAG, BELIEVE TO BE ORIGINAL PER "F"/MAPS/53  
● = FOUND 5/8" REBAR, NO TAG

A description of the physical condition of the monument as found and as set or reset:

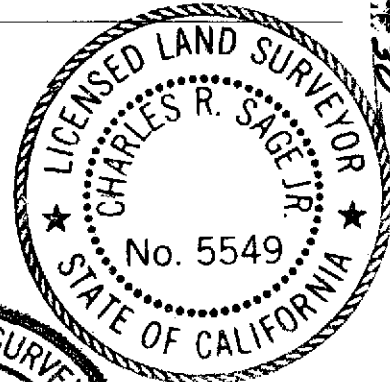
○ = SET 1" IRON PIPE W/PLASTIC PLUG, L.S. 5549

JN. 04074

**SURVEYOR'S STATEMENT**

This Corner Record was prepared by me or under my direction in conformance with the Land Surveyor's Act on JUNE 7, 2004

Signed Charles R. Sage Jr. P.L.S or R.C.E. No. L.S. 5549  
LIC. 1547. 6/30/05



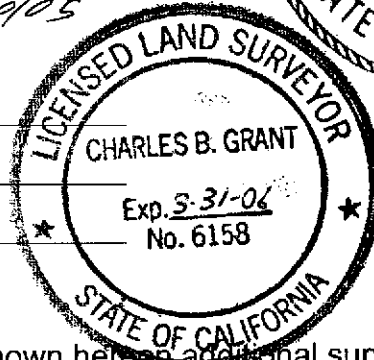
**COUNTY SURVEYOR'S STATEMENT**

This Corner Record was received OCTOBER 21, 04

and examined and filed NOVEMBER 10 2004

Signed Charles B. Grant P.L.S or R.C.E. No. LS6158

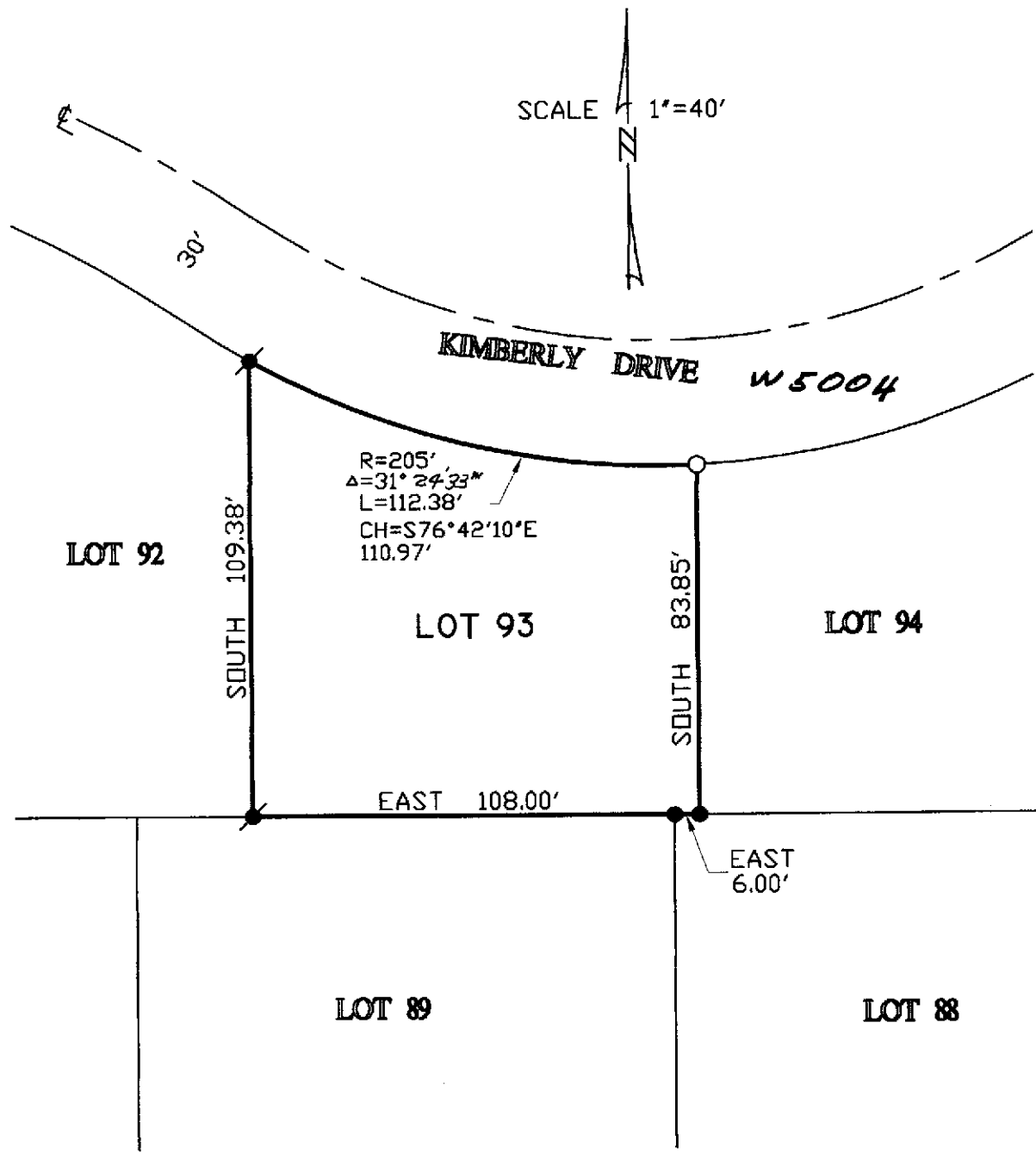
Title DEPUTY COUNTY SURVEYOR.



County Surveyor's Comment In addition to the information shown hereon, additional survey information was collected to verify the right-of-way as shown hereon is identical to that dedicated on the plat entitled CONSTOCK ACRES filed in Book F at Page 53 P.C.R.

BOOK 9 CORNER RECORDS PAGE 53

NOTE: THE BEARINGS & DISTANCES SHOWN ARE RECORD PER 'F'/MAPS/53 P.C.R.  
 NO MATERIAL DISCREPANCIES WITH RECORD INFORMATION WERE FOUND.



SCALE 1"=40'

FROM 9 JOURNAL RECORDS PAGE 30