

CORNER RECORD

Document Number

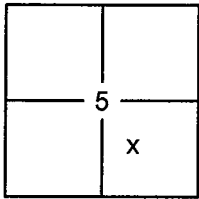
20140070

City of _____

County of

PLACER

California

Brief Legal Description LOT 76, BEAR CREEK ASSOCIATION SUBDIVISION, H/MAPS/19 O.R.P.C.

SEC. 5
T. 15 N.
R. 16 E.
M.D.B. & M.

CORNER TYPE

Government Corner Control
 Meander Property
 Rancho Other
 Date of Survey 07/22/2014

COORDINATES (OPTIONAL)

N. _____
 E. _____
 Zone _____ Datum _____
 Elev. _____
 Vert. Datum: NGVD29 NAVD88
 Meas. Units: Metric Imperial

CORNER- Left as Found Found and Tagged Established Reestablished Rebuilt

Identification and type of corner found: Evidence used to identify or procedure used to establish or reestablish the corner:

USED RECORD DIMENSIONS AND FOUND MONUMENTS PER H/MAPS/19, AND UNRECORDED MONUMENTS FOUND IN RECORD POSITION TO REESTABLISH THE MISSING CORNERS OF LOT 76, AS SHOWN ON THE ACCOMPANYING PLAT.

A description of the physical condition of the monument as found and as set or reset:

- SET 5/8" REBAR WITH YELLOW PLASTIC CAP LS-7429 (UNLESS OTHERWISE NOTED)
 FOUND MONUMENT AS SHOWN ON PLAT
 DIMENSION POINT (NOTHING FOUND OR SET)

SURVEYOR'S STATEMENT

This Corner Record was prepared by me or under my direction in conformance with the

Land Surveyors Act on August 11, 2014

Signed [Signature] (P.L.S.) or R.C.E. No. 7429



COUNTY SURVEYOR'S STATEMENT

This Corner Record was received _____

and examined and filed December 17, 2014

Signed [Signature] P.L.S. or R.C.E. No. 6584

Title County Surveyor

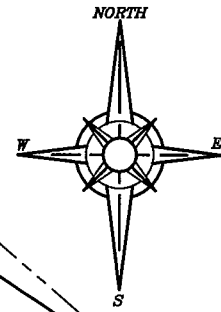


COUNTY SURVEYOR'S COMMENT:

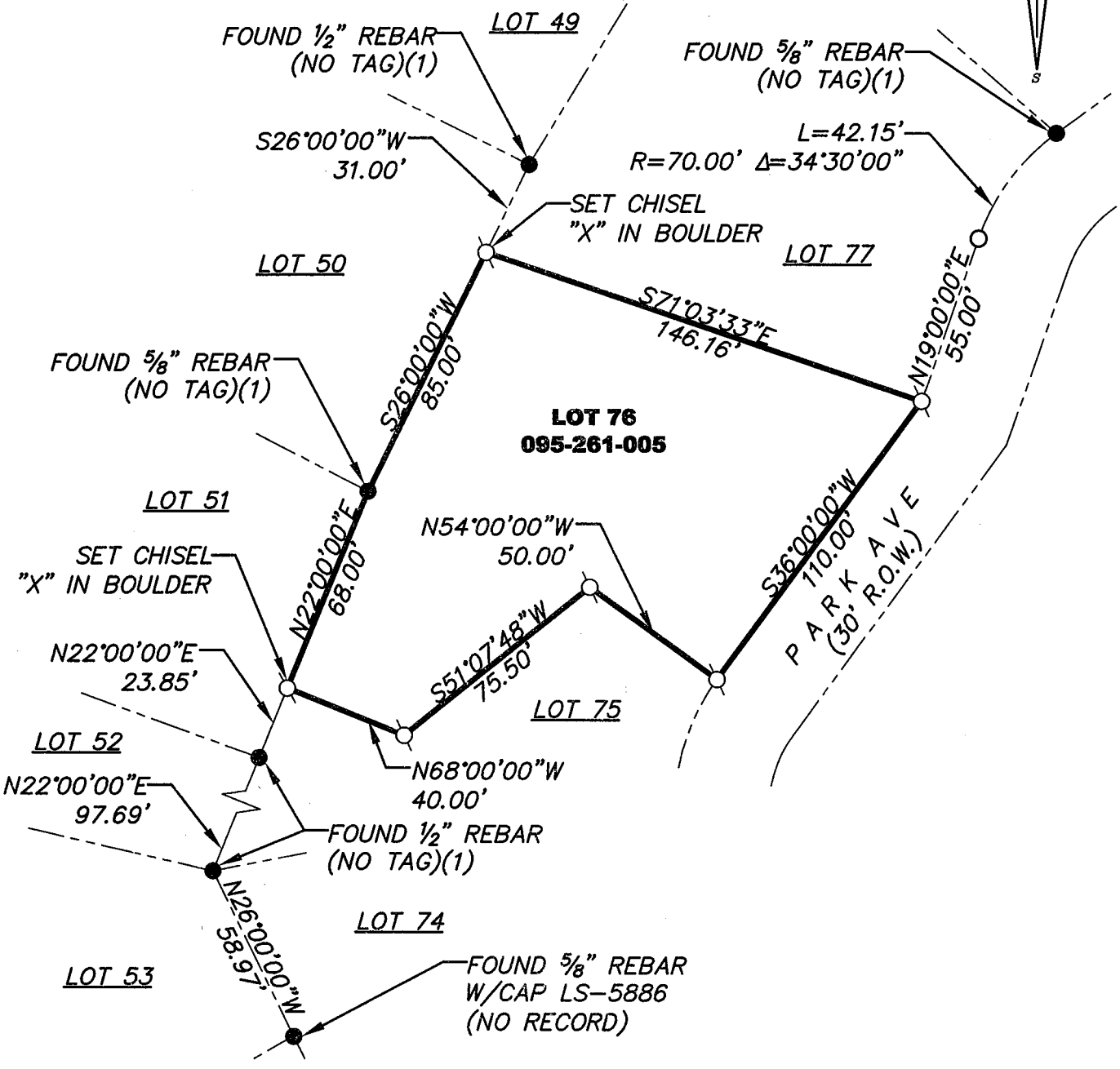
PLAT OF SURVEY

LOT 76, BEAR CREEK ASSOCIATION SUBDIVISION, AS FILED PER BOOK H OF MAPS AT PAGE 19, OFFICIAL RECORDS PLACER COUNTY, CALIFORNIA. A PORTION OF SECTION 5, TOWNSHIP 15 N., RANGE 16 E., M.D.B. & M.

SCALE 1" = 50' DATE OF SURVEY 08/07/2014



BOOK 17 CORNER RECORDS PAGE 53



- FOUND MONUMENT AS SHOWN HEREON
- SET 5/8" REBAR WITH PLASTIC CAP L.S. 7429 (UNLESS OTHERWISE NOTED)
- (1) PER H/MAPS/19

J/N 2404.00