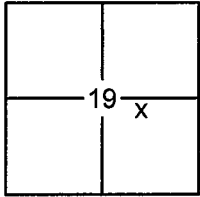


# CORNER RECORD

Document Number 20140092

City of \_\_\_\_\_

County of PLACER, CaliforniaBrief Legal Description LOTS 10 & 11, SUNSET PINES SUBDIVISION, D/MAPS/68 O.R.P.C.

SEC. 19  
T. 16 N.  
R. 18 E.  
M.D.B. & M.

### CORNER TYPE

Government Corner  Control  
 Meander  Property  
 Rancho  Other  
 Date of Survey 10/9/2014

### COORDINATES (OPTIONAL)

N. \_\_\_\_\_  
 E. \_\_\_\_\_  
 Zone \_\_\_\_\_ Datum \_\_\_\_\_  
 Elev. \_\_\_\_\_  
 Vert. Datum: NGVD29  NAVD88   
 Meas. Units: Metric  Imperial

CORNER- Left as Found  Found and Tagged  Established  Reestablished  Rebuilt

Identification and type of corner found: Evidence used to identify or procedure used to establish or reestablish the corner:

USED RECORD DIMENSIONS AND FOUND MONUMENTS PER D/MAPS/68 AND A MONUMENT OF NO RECORD IN RECORD POSITION, TO REESTABLISH THE MISSING CORNERS OF LOTS 10 & 11, AS SHOWN ON THE ACCOMPANYING PLAT.

A description of the physical condition of the monument as found and as set or reset:

- SET 5/8" REBAR WITH YELLOW PLASTIC CAP LS-7429 AS SHOWN ON PLAT
- FOUND MONUMENT AS SHOWN ON PLAT

### SURVEYOR'S STATEMENT

This Corner Record was prepared by me or under my direction in conformance with the

Land Surveyors Act on OCTOBER 10, 2014

Signed *Matthew S. Webb* P.L.S. or R.C.E. No. 7429



### COUNTY SURVEYOR'S STATEMENT

This Corner Record was received \_\_\_\_\_

and examined and filed December 17, 2014

Signed *Leslie Amberry* P.L.S. or R.C.E. No. 6584

Title County Surveyor



### COUNTY SURVEYOR'S COMMENT:

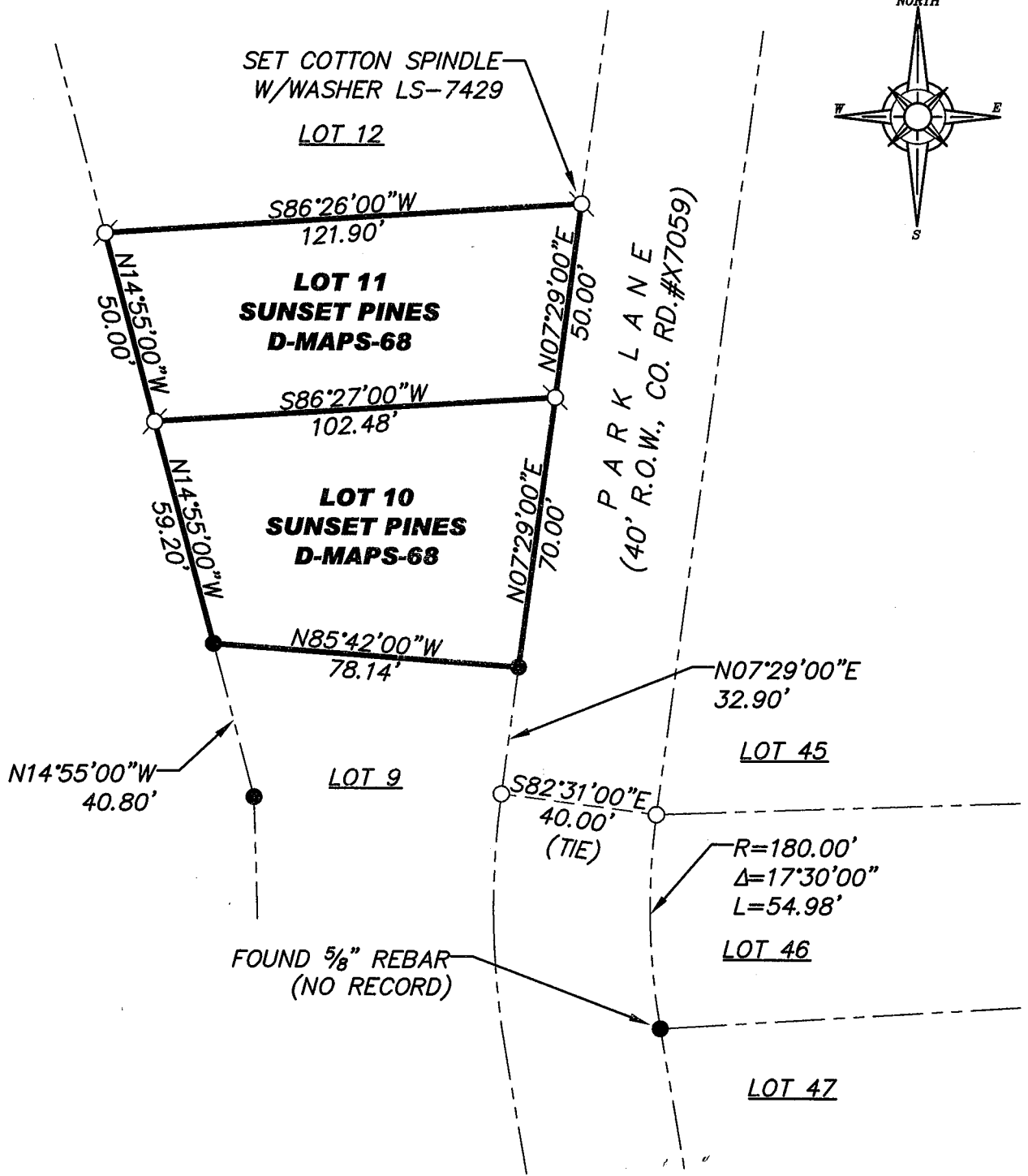
\_\_\_\_\_  
 \_\_\_\_\_  
 \_\_\_\_\_  
 \_\_\_\_\_

BOOK 17 CORNER RECORDS PAGE 57

PLAT OF SURVEY

LOTS 10 & 11, SUNSET PINES SUBDIVISION, AS FILED IN BOOK D OF MAPS AT PAGE 68, OFFICIAL RECORDS PLACER COUNTY, CALIFORNIA. A PORTION OF SECTION 19, TOWNSHIP 16 N., RANGE 18 E., M.D.B. & M.

SCALE 1" = 40' DATE OF SURVEY 10/9/2014



BOOK 17 CORNER RECORDS PAGE 57

- FOUND 3/4" OPEN IRON PIPE PER D/MAPS/68, UNLESS OTHERWISE NOTED
- ♂ SET 5/8" REBAR WITH YELLOW PLASTIC CAP L.S. 7429 OR OTHERWISE NOTED
- DIMENSION POINT (NOTHING FOUND OR SET)

J/N 2450.00