

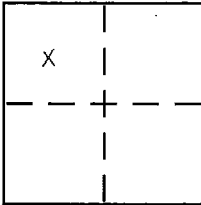
CORNER RECORD

Document Number 20140096

City of UNINCORPORATED

County of PLACER, California

Brief Legal Description PARCEL B PER BOOK 3 OF PARCEL MAPS, PAGE 31



SEC.18

CORNER TYPE

COORDINATES (Optional)

T.13N. Government Corner Control
R.9.E. Meander Property
M.D.M. Rancho Other
Date of Survey 10/2014

N. _____
E. _____
Zone _____ NAD27 NAD83
NAD83 Epoch _____
Elev. _____
Vert. Datum: NGVD29 NAVD88
Meas. Units: Metric Imperial

Corner - Left as found Found and tagged Established Reestablished Rebuilt

Identification and type of corner found: Evidence used to identify or procedure used to establish or reestablish the corner:
FOUND 2 CONCRETE HIGHWAY MONUMENTS W/ IRON PIN PER 3 PM 31 TOGETHER WITH
2 REBARS (NO TAG) PER 3 PM 31.
MISSING CORNERS ON THE SOUTHWEST LINE OF PARCEL B WERE ESTABLISHED USING
RECORD DATA PER 3 PM 31; SEE EXHIBIT ON NEXT PAGE.

A description of the physical condition of the monument as found and as set or reset: _____
BEGINNING OF CURVE, END OF CURVE AND SOUTH CORNER OF PARCEL B WERE
RE-SET WITH 5/8" REBAR WITH CAP "PLS 8139"
SEE EXHIBIT ON NEXT PAGE.

SURVEYOR'S STATEMENT

This Corner Record was prepared by me or under my direction in conformance with
the Land Surveyor's Act on January 8th; 2015
Signed [Signature] P.L.S or R.C.E. No. 8139



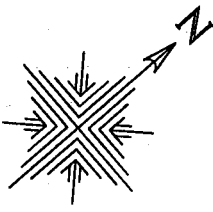
COUNTY SURVEYOR'S STATEMENT

This Corner Record was received _____
and examined and filed JANUARY 23, 2015
Signed [Signature] P.L.S or R.C.E. No. 6584
Title County Surveyor



County Surveyor's Comment _____

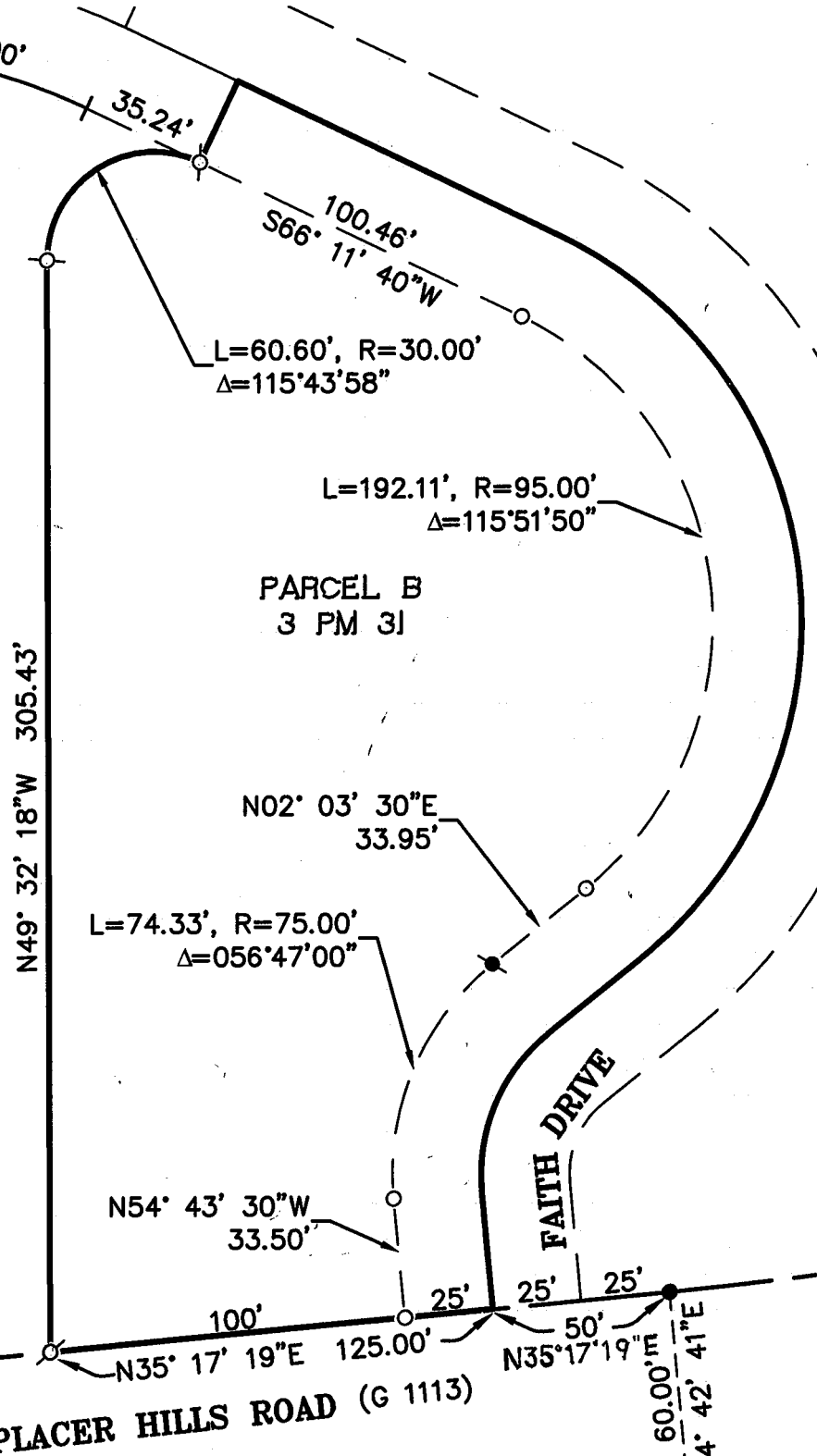
BOOK 17 CORNER RECORDS PAGE 64



SCALE: 1"=50'

LEGEND:

- DIM POINT, NOTHING FOUND, NOTHING SET
- FOUND CONC MON W/ IRON PIN (PER 3 PM 31)
- ◐ FOUND 1/2" IRON PIN (NO TAG) (PER 3 PM 31)
- ◑ 1/2" IRON PIN (PER 3 PM 31) S.F.N.F. SET 5/8" REBAR W/CAP "PLS 8139"
- S.F.N.F. SEARCHED FOR, NOTHING FOUND



AltaVista
 3260 BLUME DRIVE
 RICHMOND, CA 94806