

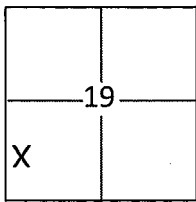
CORNER RECORD

Document Number 20150002

City of unincorporated area

County of Placer, California

Brief Legal Description LOT 311, TRACT NO.722, "LOS LAGOS UNIT NO. 4-B", R MAPS 29



T.11 N.
R.8 E.

CORNER TYPE

Government Corner Control
 Meander Property
 Rancho Other

Date of Survey SEPTEMBER 22, 2014

COORDINATES(Optional)

N. _____
 E. _____
 Zone _____ NAD27 NAD83
 NAD83 Epoch _____
 Elev. _____
 Vert. Datum: NGVD29 NADV88
 Meas. Units: Metric Imperial

Corner - Left as found Found and tagged Established Reestablished Rebuilt

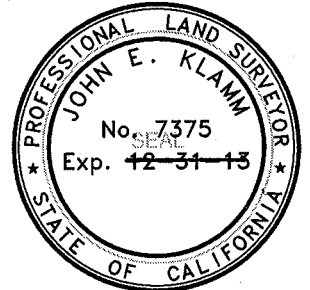
Identification and type of corner found: Evidence used to identify or procedure used to establish or reestablish the corner:
FOUND 3/4" IRON PIPES "LS 4715", AND RR SPIKES STAMPED "LS 4715". AS SHOWN ON
"LOS LAGOS UNIT NO. 4-B", BOOK R OF MAPS, PAGE 29.

A description of the physical condition of the monument as found and as set or reset: ALL MONUMENTS WERE FOUND
TO BE UNDISTURBED AND LEGIBLE. REESTABLISHED MISSING CORNERS WITH A MAG
NAIL AND TAG STAMPED "LS 7375" SET IN A GRANITE SLAB, AND A GASH AT THE BACK
OF WALK ON THE PROPERTY LINE EXTENDED DUE TO A FIRE HYDRANT BEING LOCATED
AT THE ACTUAL CORNER.

SURVEYOR'S STATEMENT

This Corner Record was prepared by me or under my direction in conformance with
 the Land Surveyor's Act on January 19, 2015

Signed John E. Klamm (P.L.S.) or R.C.E. No.: 7375



COUNTY SURVEYOR'S STATEMENT

This Corner Record was received _____ and examined
 and filed JANUARY 22, 2015

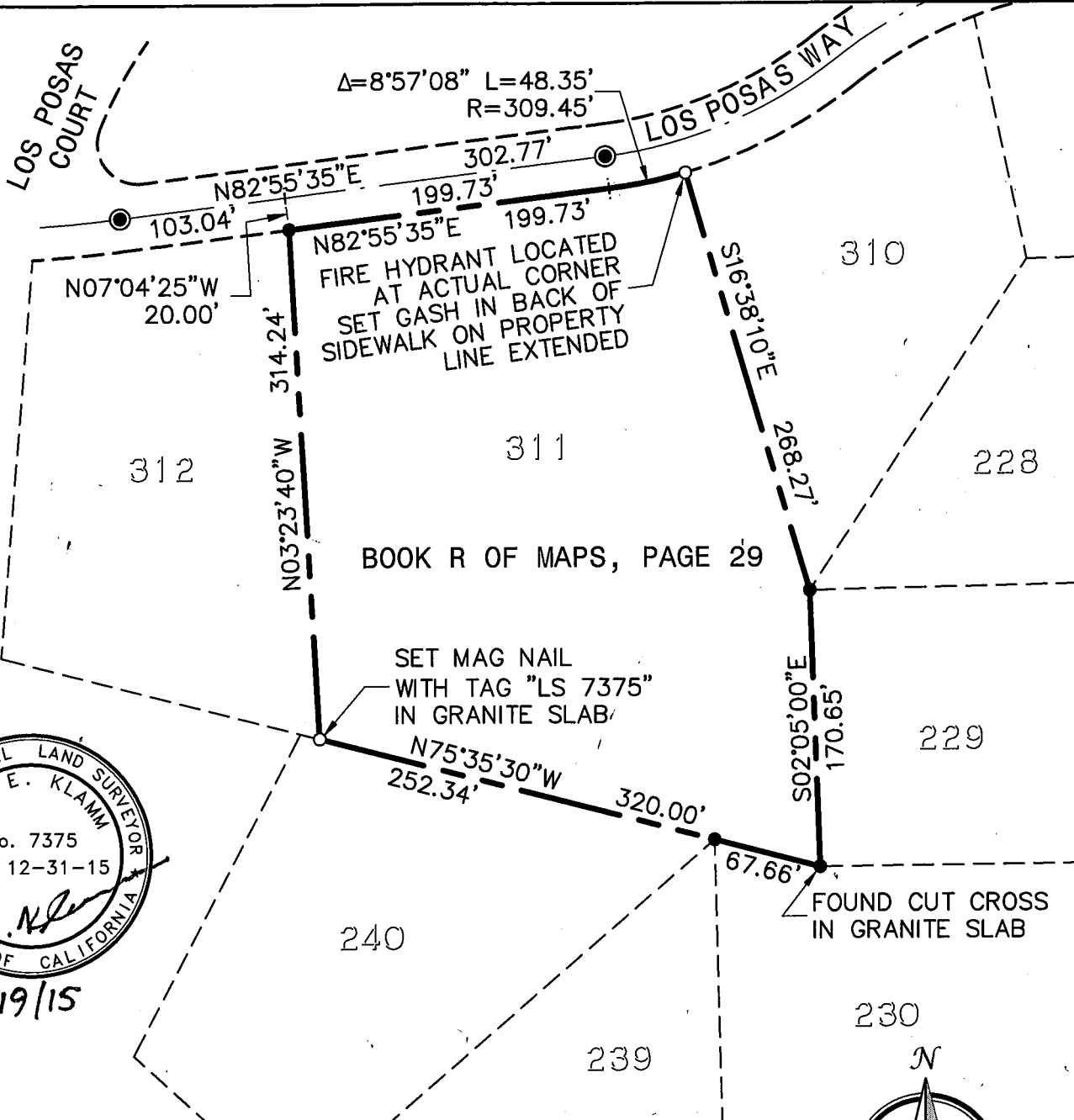
Signed Leslie Amberry P.L.S. or R.C.E. No.: 6584

Title County Surveyor

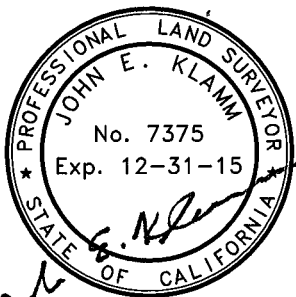
County Surveyor's Comment _____



BOOK 17 CORNER RECORDS PAGE 66



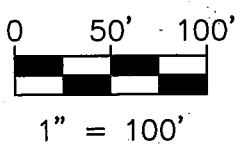
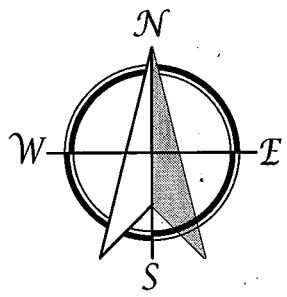
BOOK 17 CORNER RECORDS PAGE 66



Handwritten: 1/19/15

NOTE:
ALL BEARINGS AND DISTANCES SHOWN HEREON,
ARE RECORD PER R MAPS 29.

LEGEND:
 FOUND RR SPIKE STAMPED "LS 4715". ●
 FOUND 3/4" IRON PIPE "LS 4715"
 (EXCEPT AS NOTED) ●



CORNER RECORD
LOT 311, TRACT NO. 722
"LOS LAGOS UNIT NO. 4-B" R MAPS 29
COUNTY OF PLACER, STATE OF CALIFORNIA

31 Natoma Street, Suite #160
 Folsom, CA 95630
 Phone: (916) 608-0707
 Fax: (916) 608-0701

TSD ENGINEERING, INC.
expect more.

SCALE: 1"=100'
DATE: 1/16/15
PAGE 2 OF 2