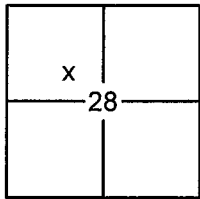


CORNER RECORD

Document Number 20140104

City of _____ County of PLACER, California

Brief Legal Description LOTS 12, 73 & 135 FULTON ACRES SUBDIVISION, D/MAPS/93 O.R.P.C.



SEC. 28
T. 16 N.
R. 17 E.
M.D.B. & M.

CORNER TYPE

Government Corner Control
 Meander Property
 Rancho Other
 Date of Survey 9/10/2014

COORDINATES (OPTIONAL)

N. _____
 E. _____
 Zone _____ Datum _____
 Elev. _____
 Vert. Datum: NGVD29 NAVD88
 Meas. Units: Metric Imperial

CORNER- Left as Found Found and Tagged Established Reestablished Rebuilt

Identification and type of corner found: Evidence used to identify or procedure used to establish or reestablish the corner:

USED RECORD DIMENSIONS AND FOUND MONUMENTS PER D/MAPS/93, 3/CR/191 & 5/CR/93 O.R.P.C., AND MONUMENTS OF NO RECORD IN RECORD POSITION TO REESTABLISH THE MISSING CORNERS OF LOTS 12, 73 & 135 AS SHOWN ON THE ACCOMPANYING PLAT.

A description of the physical condition of the monument as found and as set or reset:

- SET 5/8" REBAR WITH YELLOW PLASTIC CAP LS-7429 AS SHOWN ON PLAT
- SET COTTON SPINDLE WITH BRASS WASHER LS-7429
- FOUND MONUMENT AS SHOWN ON PLAT
- DIMENSION POINT (NOTHING FOUND OR SET)

SURVEYOR'S STATEMENT

This Corner Record was prepared by me or under my direction in conformance with the Land Surveyors Act on October 30, 2014
 Signed [Signature] P.L.S. or R.C.E. No. 7429



COUNTY SURVEYOR'S STATEMENT

This Corner Record was received _____
 and examined and filed FEBRUARY 5, 2015
 Signed [Signature] P.L.S. or R.C.E. No. 6584
 Title County Surveyor



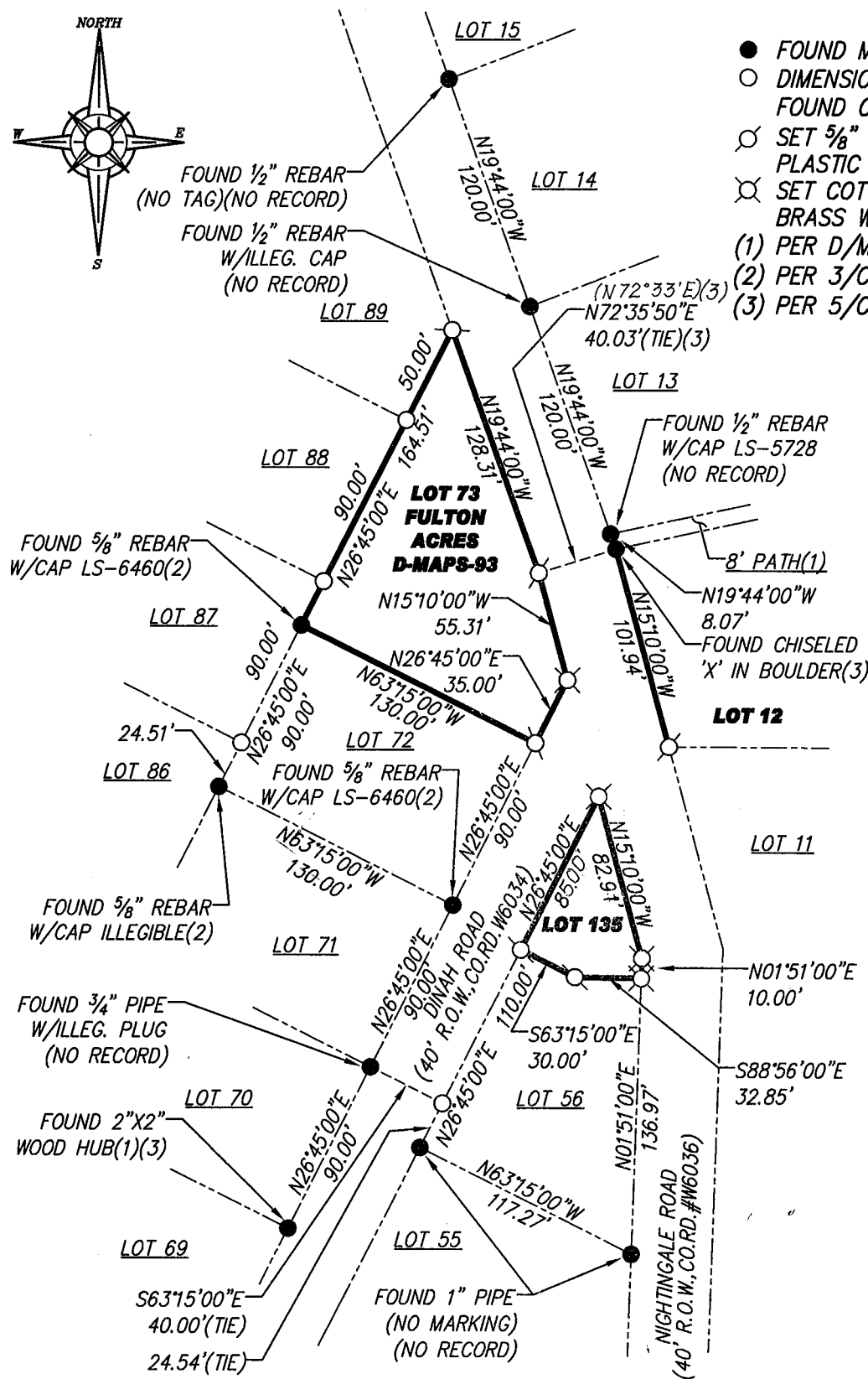
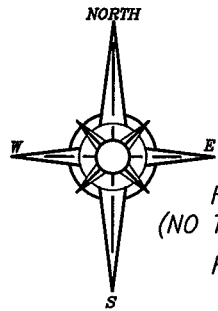
COUNTY SURVEYOR'S COMMENT:

BOOK 17 CORNER RECORDS PAGE 70

PLAT OF SURVEY

LOT 12, 73, & 135 FULTON ACRES SUBDIVISION, AS FILED IN BOOK D OF MAPS AT PAGE 93, OFFICIAL RECORDS PLACER COUNTY, CALIFORNIA. A PORTION OF SECTION 28, TOWNSHIP 16 N., RANGE 17 E., M.D.B. & M.

SCALE 1" = 80' DATE OF SURVEY 9/10/2014



- FOUND MONUMENT AS NOTED
- DIMENSION POINT (NOTHING FOUND OR SET)
- ⊗ SET 5/8" REBAR WITH YELLOW PLASTIC CAP LS-7429
- ⊗ SET COTTON SPLINDLE WITH BRASS WASHER LS-7429
- (1) PER D/MAPS/93
- (2) PER 3/CR/191
- (3) PER 5/CR/93

BOOK 17 CORNER RECORDS PAGE 70

J/N 2360.01