

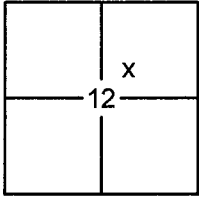
CORNER RECORD

Document Number 20150009

City of _____

County of PLACER, California

Brief Legal Description LOTS 90 & 101, KINGSWOOD ESTATES UNIT NO. 5 SUBDIVISION, I/MAPS/57 O.R.P.C.



SEC. 12
T. 16 N.
R. 17 E.
M.D.B. & M.

CORNER TYPE

Government Corner Control
 Meander Property
 Rancho Other
 Date of Survey 1/20/2015

COORDINATES (OPTIONAL)

N. _____
 E. _____
 Zone _____ Datum _____
 Elev. _____
 Vert. Datum: NGVD29 NAVD88
 Meas. Units: Metric Imperial

CORNER- Left as Found Found and Tagged Established Reestablished Rebuilt

Identification and type of corner found: Evidence used to identify or procedure used to establish or reestablish the corner:

USED RECORD DIMENSIONS AND FOUND MONUMENTS PER I/MAPS/57 AND 10/CR/28 O.R.P.C. AND A MONUMENT OF NO RECORD IN RECORD POSITION, TO REESTABLISH THE MISSING CORNERS OF LOTS 90 & 101, AS SHOWN ON THE ACCOMPANYING PLAT.

A description of the physical condition of the monument as found and as set or reset:

- SET 5/8" REBAR WITH YELLOW PLASTIC CAP LS-7429 AS SHOWN ON PLAT
- FOUND MONUMENT AS SHOWN ON PLAT
- FOUND 1/2" REBAR PER I/MAPS/57
- DIMENSION POINT (NOTHING FOUND OR SET)

SURVEYOR'S STATEMENT

This Corner Record was prepared by me or under my direction in conformance with the

Land Surveyors Act on January 21, 2015

Signed [Signature] P.L.S. or R.C.E. No. 7429



COUNTY SURVEYOR'S STATEMENT

This Corner Record was received _____

and examined and filed February 21, 2015

Signed [Signature] P.L.S. or R.C.E. No. 6584

Title County Surveyor



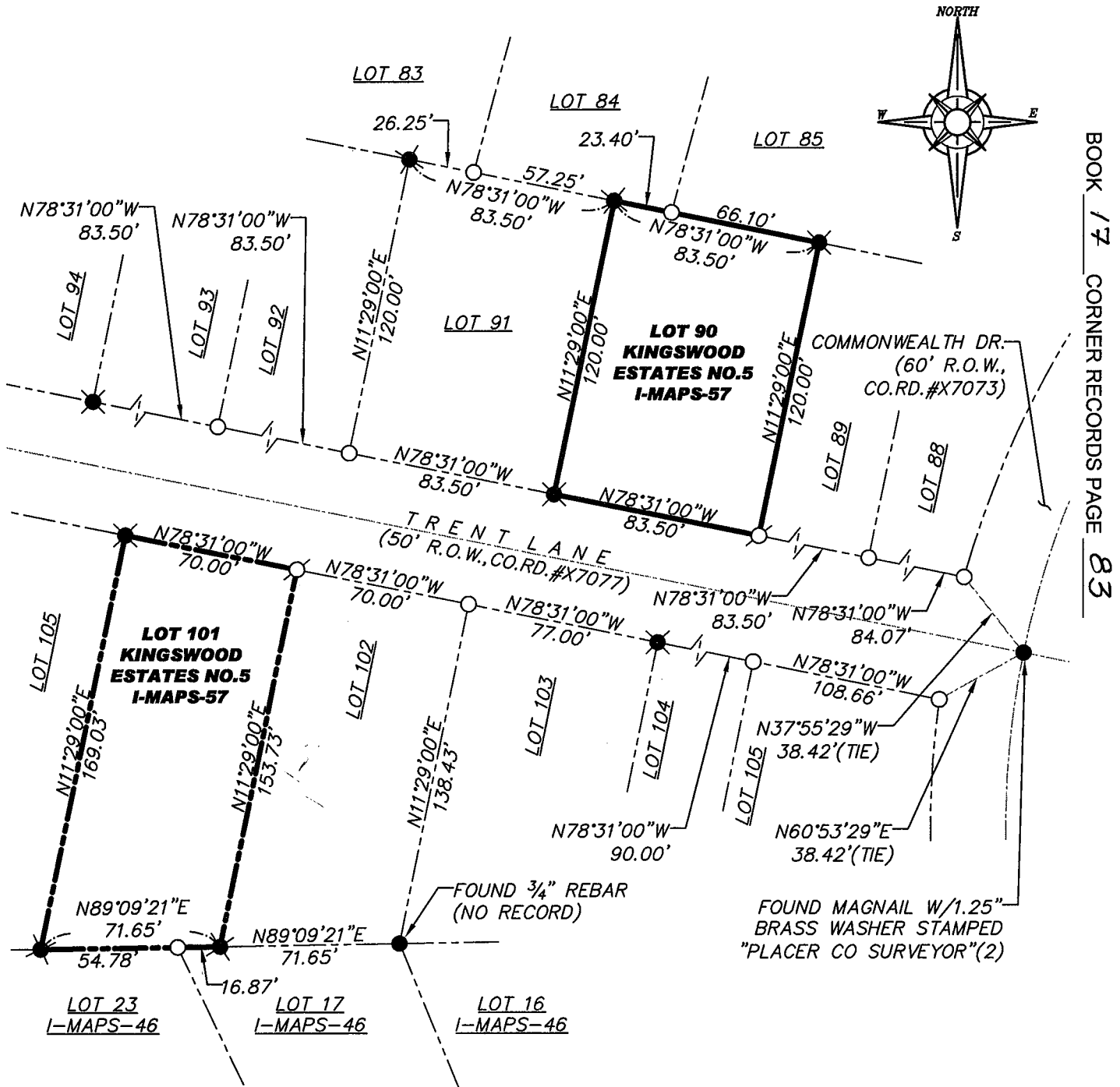
COUNTY SURVEYOR'S COMMENT:

BOOK 17 CORNER RECORDS PAGE 83

PLAT OF SURVEY

LOTS 90 & 101, KINGSWOOD ESTATES UNIT NO. 5 SUBDIVISION, AS FILED IN BOOK 1 OF MAPS AT PAGE 57, OFFICIAL RECORDS PLACER COUNTY, CALIFORNIA. A PORTION OF SECTION 12, TOWNSHIP 16 N., RANGE 17 E., M.D.B. & M.

SCALE 1" = 60' DATE OF SURVEY 1/20/2015



BOOK 17 CORNER RECORDS PAGE 83

- FOUND MONUMENT AS SHOWN HEREON
- ⊗ FOUND 1/2" REBAR (1)
- ⊙ SET 5/8" REBAR WITH YELLOW PLASTIC CAP L.S. 7429
- DIMENSION POINT (NOTHING FOUND OR SET)
- (1) PER 1/MAPS/57
- (2) PER 10/CR/28

J/N 2060.06