

**CORNER RECORD**

Document Number

20130035

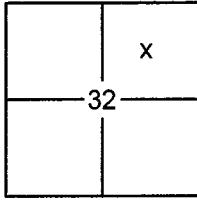
City of \_\_\_\_\_

County of

PLACER

California

Brief Legal Description POINTS SHOWN ON 15-RS-132, O.R.P.C.



SEC. 32  
T. 16 N.  
R. 17 E.  
M.D.B. & M.

**CORNER TYPE**

- Government Corner  Control
- Meander  Property
- Rancho  Other
- Date of Survey 5/1/2013

**COORDINATES (OPTIONAL)**

- N. \_\_\_\_\_
- E. \_\_\_\_\_
- Zone \_\_\_\_\_ Datum \_\_\_\_\_
- Elev. \_\_\_\_\_
- Vert. Datum: NGVD29  NAVD88
- Meas. Units: Metric  Imperial

**CORNER-** Left as Found  Found and Tagged  Established  Reestablished  Rebuilt

Identification and type of corner found: Evidence used to identify or procedure used to establish or reestablish the corner:

USED RECORD DIMENSIONS AND FOUND MONUMENTS PER 15-RS-132 O.R.P.C.,  
TO REESTABLISH THE MISSING CORNERS OF DOCUMENT NO. 2012-0023159 AS SHOWN ON THE ACCOMPANYING PLAT.

A description of the physical condition of the monument as found and as set or reset:

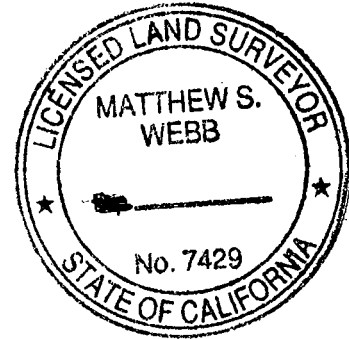
- SET 5/8" REBAR WITH YELLOW PLASTIC CAP LS-7429
- FOUND MONUMENT AS SHOWN ON PLAT

**SURVEYOR'S STATEMENT**

This Corner Record was prepared by me or under my direction in conformance with the

Land Surveyors Act on June 24, 2014

Signed [Signature] (P.L.S.) or R.C.E. No. 7429



**COUNTY SURVEYOR'S STATEMENT**

This Corner Record was received \_\_\_\_\_

and examined and filed July 11 2014

Signed [Signature] P.L.S. or R.C.E. No. 6584

Title County Surveyor



**COUNTY SURVEYOR'S COMMENT:**

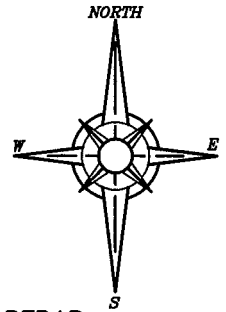
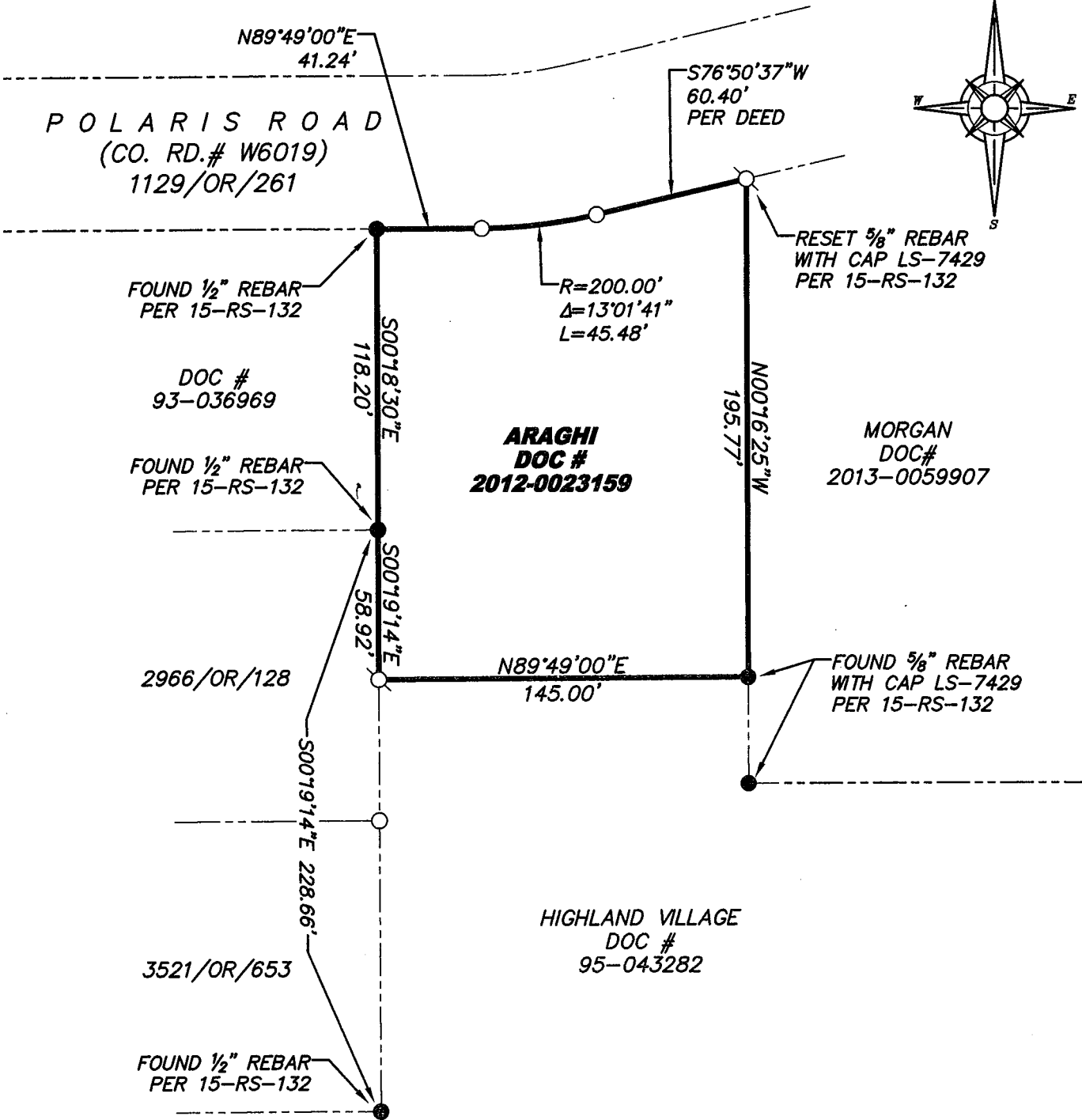
\_\_\_\_\_  
\_\_\_\_\_  
\_\_\_\_\_  
\_\_\_\_\_

BOOK 17 CORNER RECORDS PAGE 4

PLAT OF SURVEY

SET SOUTHEAST CORNER OF ARAGHI, DOCUMENT NO. 2012-0023159, AS SHOWN ON BOOK 15 OF SURVEYS AT PAGE 132, OFFICIAL RECORDS PLACER COUNTY, CALIFORNIA. A PORTION OF SECTION 32, TOWNSHIP 16 N., RANGE 17 E., M.D.B. & M.

SCALE 1" = 60' DATE OF SURVEY 5/1/2013



BOOK 17 CORNER RECORDS PAGE 4

- FOUND MONUMENT AS NOTED
- DIMENSION POINT (NOTHING FOUND OR SET)
- SET 5/8" REBAR WITH YELLOW PLASTIC CAP L.S. 7429

J/N 1717.00