

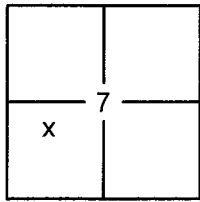
CORNER RECORD

Document Number 20130051

City of _____

County of PLACER, California

Brief Legal Description LOT 24, MCKINNEY SHORES SUBDIVISION, G/MAPS/25 O.R.P.C.



SEC. 7
T. 14 N.
R. 17 E.
M.D.B. & M.

CORNER TYPE

Government Corner Control
 Meander Property
 Rancho Other
 Date of Survey 7/2/2013

COORDINATES (OPTIONAL)

N. _____
 E. _____
 Zone _____ Datum _____
 Elev. _____
 Vert. Datum: NGVD29 NAVD88
 Meas. Units: Metric Imperial

CORNER- Left as Found Found and Tagged Established Reestablished Rebuilt

Identification and type of corner found: Evidence used to identify or procedure used to establish or reestablish the corner:

USED RECORD DIMENSIONS AND FOUND MONUMENTS PER G/MAPS/25 & 10/COR/69 O.R.P.C.,
TO REESTABLISH THE MISSING CORNERS OF LOT 24 AS SHOWN ON THE ACCOMPANYING PLAT.

A description of the physical condition of the monument as found and as set or reset:

- SET 5/8" REBAR WITH YELLOW PLASTIC CAP LS-7429, UNLESS OTHERWISE NOTED
- FOUND MONUMENT AS SHOWN ON PLAT
- DIMENSION POINT (NOTHING FOUND OR SET)

SURVEYOR'S STATEMENT

This Corner Record was prepared by me or under my direction in conformance with the

Land Surveyors Act on June 25, 2014

Signed [Signature] (P.L.S.) or R.C.E. No. 7429



COUNTY SURVEYOR'S STATEMENT

This Corner Record was received _____

and examined and filed July 11 2014

Signed [Signature] P.L.S. or R.C.E. No. 6584

Title County Surveyor



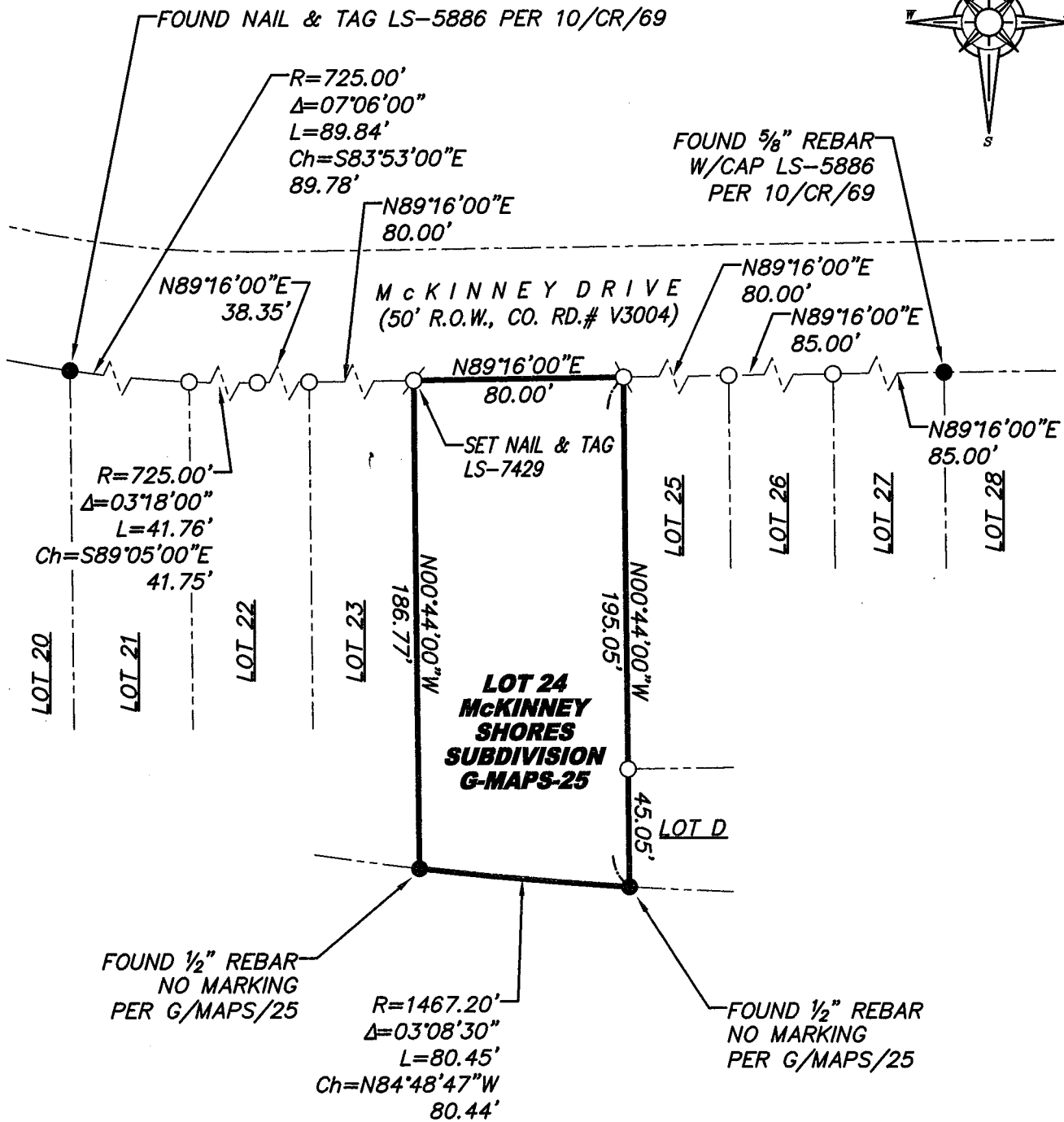
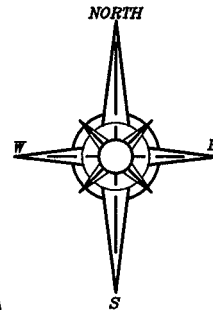
COUNTY SURVEYOR'S COMMENT:

BOOK 17 CORNER RECORDS PAGE 9

PLAT OF SURVEY

LOT 24, MCKINNEY SHORES SUBDIVISION, BOOK G OF MAPS AT PAGE 25, OFFICIAL RECORDS PLACER COUNTY, CALIFORNIA. A PORTION OF SECTION 7, TOWNSHIP 14 N., RANGE 17 E., M.D.B. & M.

SCALE 1" = 60' DATE OF SURVEY 7/1/2013



BOOK 17 CORNER RECORDS PAGE 9

- FOUND MONUMENT AS NOTED
- SET $\frac{5}{8}$ " REBAR WITH YELLOW PLASTIC CAP L.S. 7429, UNLESS OTHERWISE NOTED
- DIMENSION POINT (NOTHING FOUND OR SET)

J/N 1260.00