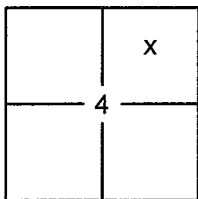


CORNER RECORD

Document Number

20130089

City of _____

County of PLACER, CaliforniaBrief Legal Description LOT 186, ALPINE MEADOWS ESTATES SUBDIVISION UNIT NO.6, I/MAPS/19 O.R.P.C.

SEC. 4
T. 15 N.
R. 16 E.
M.D.B. & M.

CORNER TYPE

Government Corner Control
 Meander Property
 Rancho Other
 Date of Survey 11/18/2013

COORDINATES (OPTIONAL)

N. _____
 E. _____
 Zone _____ Datum _____
 Elev. _____
 Vert. Datum: NGVD29 NAVD88
 Meas. Units: Metric Imperial

BOOK 17 CORNER RECORDS PAGE 12

CORNER- Left as Found Found and Tagged Established Reestablished Rebuilt

Identification and type of corner found: Evidence used to identify or procedure used to establish or reestablish the corner:

USED RECORD DIMENSIONS PER I/MAPS/19 AND FOUND MONUMENTS 1/CR/179 & 16/CR/62 O.R.P.C. AND MONUMENTS OF NO RECORD, TO REESTABLISH THE MISSING CORNERS OF LOT 186 AS SHOWN ON THE ACCOMPANYING PLAT.

A description of the physical condition of the monument as found and as set or reset:

- SET 5/8" REBAR WITH YELLOW PLASTIC CAP LS-7429
 FOUND MONUMENT AS SHOWN ON PLAT
 DIMENSION POINT (NOTHING FOUND OR SET)

SURVEYOR'S STATEMENT

This Corner Record was prepared by me or under my direction in conformance with the

Land Surveyors Act on

June 25, 2014

Signed

[Signature]

(P.L.S.) or R.C.E. No. 7429



COUNTY SURVEYOR'S STATEMENT

This Corner Record was received _____

and examined and filed July 11 2014

Signed

[Signature]

P.L.S. or R.C.E. No. 6584

Title

County Surveyor

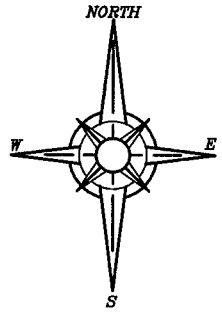


COUNTY SURVEYOR'S COMMENT:

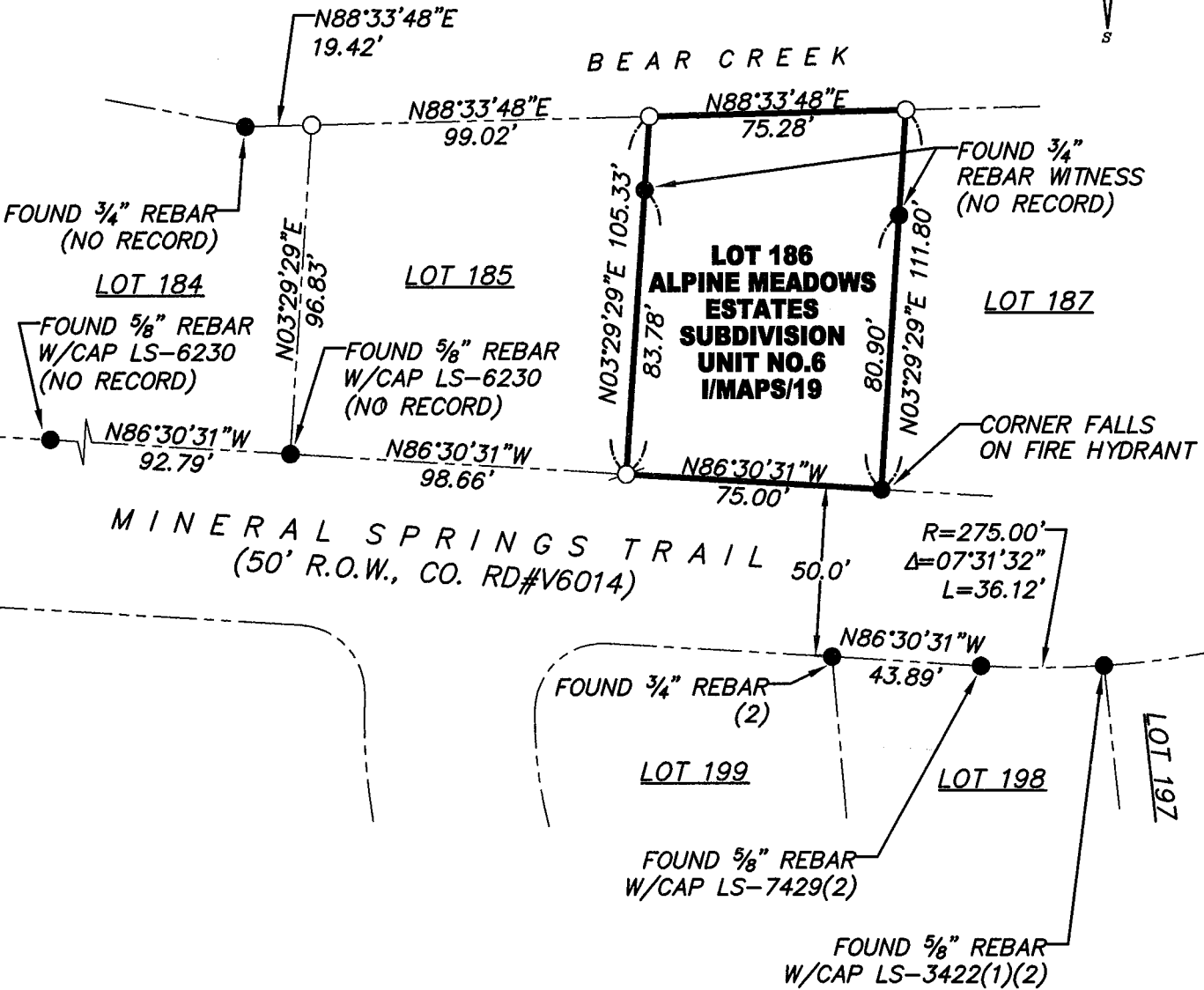
PLAT OF SURVEY

LOT 186, ALPINE MEADOWS ESTATES SUBDIVISION UNIT NO. 6, AS FILED BOOK 1 OF MAPS AT PAGE 19, OFFICIAL RECORDS PLACER COUNTY, CALIFORNIA. A PORTION OF SECTION 4, TOWNSHIP 15 N., RANGE 16 E., M.D.B. & M.

SCALE 1" = 50' DATE OF SURVEY 11/18/2013



BOOK 17 CORNER RECORDS PAGE 12



BOOK 17 CORNER RECORDS PAGE 12

- FOUND MONUMENT AS NOTED
- DIMENSION POINT (NOTHING FOUND OR SET)
- SET 5/8" REBAR WITH YELLOW PLASTIC CAP L.S. 7429
- (1) PER 1/COR/179
- (2) PER 16/COR/62

J/N 118.01