

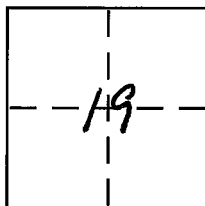
CORNER RECORD

Document Number 20140027

City of KING'S BEACH

County of PLACER, California

Brief Legal Description LOT 44, BLOCK WX, BROCKWAY VISTA S.D. D-16



TIGN  
RISE  
NAM

CORNER TYPE

Government Corner  Control   
Meander  Property   
Rancho  Other   
Date of Survey MAY 8, 2014

COORDINATES (Optional)

N. \_\_\_\_\_  
E. \_\_\_\_\_  
Zone \_\_\_\_\_ NAD27  NAD83   
NAD83 Epoch \_\_\_\_\_  
Elev. \_\_\_\_\_  
Vert. Datum: NGVD29  NAVD88   
Meas. Units: Metric  Imperial

Corner - Left as found  Found and tagged  Established  Reestablished  Rebuilt

Identification and type of corner found: Evidence used to identify or procedure used to establish or reestablish the corner:

FIND 5/8" REBAR w/ PLASTIC CAPS PLS 6508, PLS 5851  
FIND 1/2" REBAR  
FIND 3/4" IRON PIPE-OPEN  
← 21/RS/15      13/CORREC/93      16/CORREC/92  
CONC NAIL w/ PLASTIC WASHER PLS 4678 - NO REFERENCE

A description of the physical condition of the monument as found and as set or reset:

SET 5/8" REBAR w/ PLASTIC CAP PLS 7949

SURVEYOR'S STATEMENT

This Corner Record was prepared by me or under my direction in conformance with

the Land Surveyor's Act on JUNE 23, 2014

Signed [Signature] P.L.S. or R.C.E. No. 7949



COUNTY SURVEYOR'S STATEMENT

This Corner Record was received \_\_\_\_\_

and examined and filed July 16, 2014

Signed [Signature] P.L.S. or B.C.E. No. 6584

Title County Surveyor



County Surveyor's Comment \_\_\_\_\_

BOOK 17 CORNER RECORDS PAGE 14

LEGEND

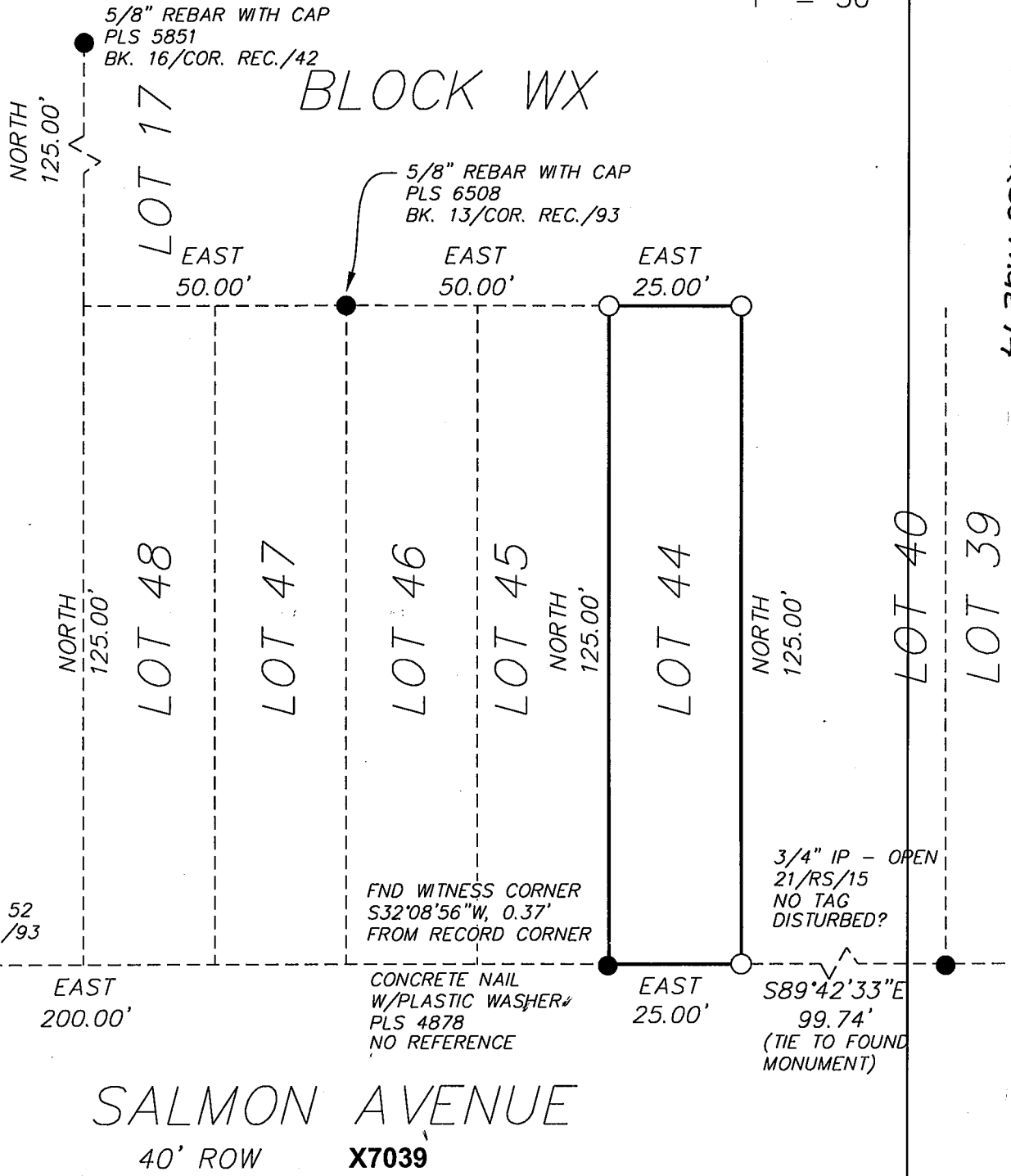
● FOUND AS NOTED

○ SET 5/8" REBAR W/PLASTIC CAP  
PLS 7949



1" = 30'

BROCKWAY VISTA SUBDIVISION  
SD D-16



BOOK 17 CORNER RECORDS PAGE 14

SALMON AVENUE  
40' ROW X7039