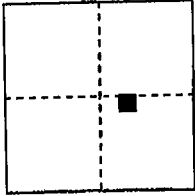


# CORNER RECORD

# COUNTY OF PLACER, CALIFORNIA

City of Squaw Valley Document Number 2014-0040

Brief Legal Description Lot 3 of Block "R", Squaw Valley Estates No. 3



S. 29

T. 16 N

R. 16 E

## CORNER TYPE

Government Corner   
Meander   
Rancho   
Date of Survey MAY 2014

Control   
Property   
Other

## COORDINATES (Optional)

N. \_\_\_\_\_  
E. \_\_\_\_\_  
Zone \_\_\_\_\_ Datum \_\_\_\_\_  
Elev. \_\_\_\_\_

Corner--- Left as found  Found and tagged  Established  Reestablished  Rebuilt

Identification and type of corner found: Evidence used to identify or procedure used to establish or reestablish corner:  
• Found monument as noted.

Used found monuments per Bk 3, CR 43 and Bk 3, CR 182 to reestablish the corners for Lot 3, Block R in Record Position.

A description of the physical condition of the monument as found and as set or reset:  
Ø Set 5/8" Rebar with Plastic Cap Stamped L.S. 7693

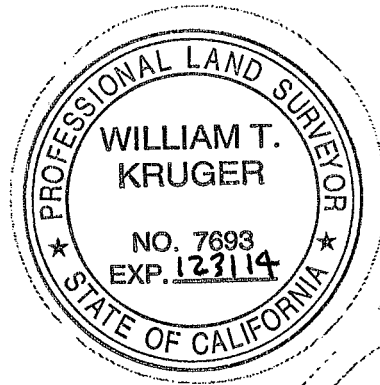
## SURVEYOR'S STATEMENT

This Corner Record was prepared by me or under my direction in conformance with the Professional Land Surveyors' Act

on May 2014

Signed William T. Kruger

L.S. or R.C.E. Number 7693 Expiration Date 12/31/2014



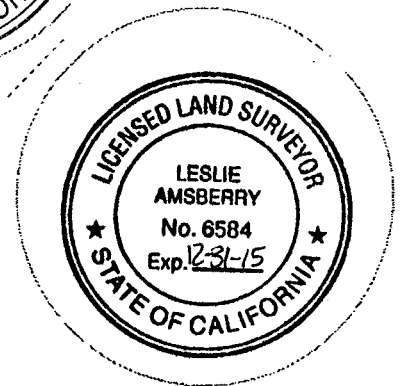
## COUNTY SURVEYOR'S STATEMENT

This Corner Record was received \_\_\_\_\_ 20\_\_\_\_

and examined and filed July 29, 2014 20\_\_\_\_

Signed Leslie Amsherry Title County Surveyor

L.S. or R.C.E. Number 6584 Expiration Date \_\_\_\_\_



County Surveyor's Comment \_\_\_\_\_

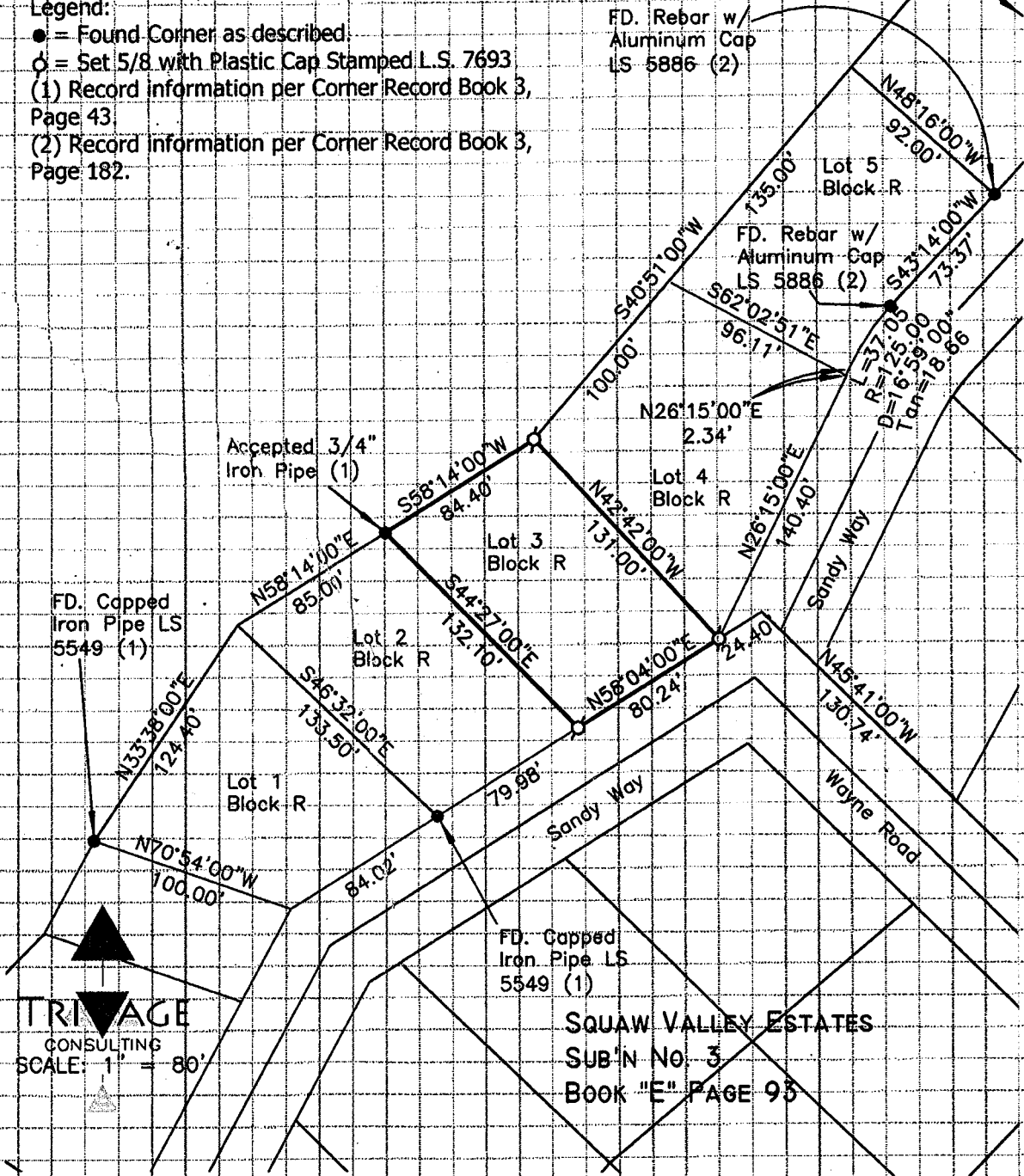
BOOK 17 CORNER RECORDS PAGE 23

Note: The Bearings and Distances shown are recorded per Book "E" of Maps on Page 93. No material discrepancies with the record information were found.

Legend:

- = Found Corner as described.
- ⊙ = Set 5/8 with Plastic Cap Stamped L.S. 7693
- (1) Record information per Corner Record Book 3, Page 43.
- (2) Record information per Corner Record Book 3, Page 182.

SQUAW VALLEY ESTATES  
SUB'N No. 4  
BOOK "F" PAGE 9



SQUAW VALLEY ESTATES  
SUB'N No. 3  
BOOK "E" PAGE 93