

CORNER RECORD

COUNTY OF PLACER, CALIFORNIA

City of Unincorporated

Document Number 20140030

Brief Legal Description East Quarter Corner Section 35

PLS Job No. 833

	S. 35	CORNER TYPE		COORDINATES <i>(Optional)</i>	
	T. 12 N	<input type="checkbox"/> Government Corner	<input type="checkbox"/> Control	N. _____	_____
	R. 5 E	<input type="checkbox"/> Meander	<input checked="" type="checkbox"/> Property	E. _____	_____
		<input type="checkbox"/> Rancho	<input type="checkbox"/> Other	Zone _____	Datum _____
	Date of Survey <u>2/19/14</u>			Elev. _____	

Corner --- Left as found Found and tagged Established Reestablished Rebuilt

Identification and type of corner found: Evidence used to identify or procedure used to establish or reestablish corner:
 Found 1-1/2" Copperweld in roadway stamped "LS 2515; 35|36; 1975" as shown on Book 18 RS 140. Also found 30' Witness Corner to south. Also found aluminum disc by Towill Inc. Measured distances to quarter corner as show on reverse.

A description of the physical condition of the monument as found and as set or reset:
 On site visit in early May, 2014 monument was found in place. It was not destroyed by construction activities for reclaimed water line, but may be paved over at compellion of construction. Reference points remain.

SURVEYOR'S STATEMENT

This Corner Record was prepared by me or under my direction
 in conformance with the Professional Land Surveyors' Act
 on May 22 20 14
 Signed Richard A. Marino
 L.S. or R.C.E. Number 6376



COUNTY SURVEYOR'S STATEMENT

This Corner Record was received _____ 20 ____
 and examined and filed September 25 20 14
 Signed Leslie Amberry Title County Surveyor
 L.S. or R.C.E. Number 6584

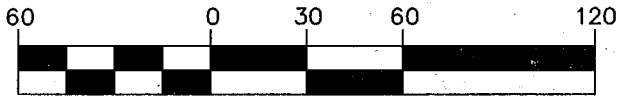


County Surveyor's Comment _____

BOOK 17 CORNER RECORDS PAGE 30



GRAPHIC SCALE



(IN FEET)

LEGEND:

● FD. OR SET AS NOTED

■ QUARTER CORNER

∧ INSTRUMENT STATION

