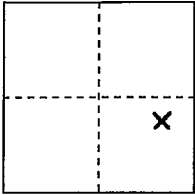


CORNER RECORD

COUNTY OF PLACER, CALIFORNIA

City of UNINCORPORATED TERRITORY Document Number 20140026

Brief Legal Description LOT 516 NORTHSTAR UNIT 6-D, L/MAPS/88, P.C.R.



S.

CORNER TYPE

COORDINATES

(Optional)

SEC 30, T.17 N., R.17 E., M.D.M.

Government Corner [ ] Control [ ] Meander [ ] Property [x] Rancho [ ] Other [ ] Date of Survey 4/28/14

N. E. Zone Datum Elev.

Corner--- Left as found [x] Found and tagged [ ] Established [ ] Reestablished [x] Rebuilt [ ]

Identification and type of corner found: Evidence used to identify or procedure used to establish or reestablish corner:

● - FOUND 1/2" IRON PIN "RCE 17795" PER L/MAPS/88

USED FOUND MONUMENTS PER L/MAPS/88 TO RESET MISSING CORNER IN RECORD POSITION

A description of the physical condition of the monument as found and as set or reset:

♠ - SET 5/8" REBAR W/CAP "PLS 5851"

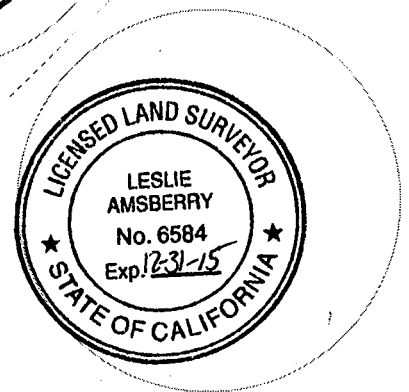
SURVEYOR'S STATEMENT

This Corner Record was prepared by me or under my direction in conformance with the Professional Land Surveyors' Act on APRIL 28, 2014. Signed [Signature] L.S. or R.C.E. Number 5851 Expiration Date 12/31/14



COUNTY SURVEYOR'S STATEMENT

This Corner Record was received 20 and examined and filed SEPTEMBER 25 2014. Signed [Signature] Title County Surveyor L.S. or R.C.E. Number 6584 Expiration Date



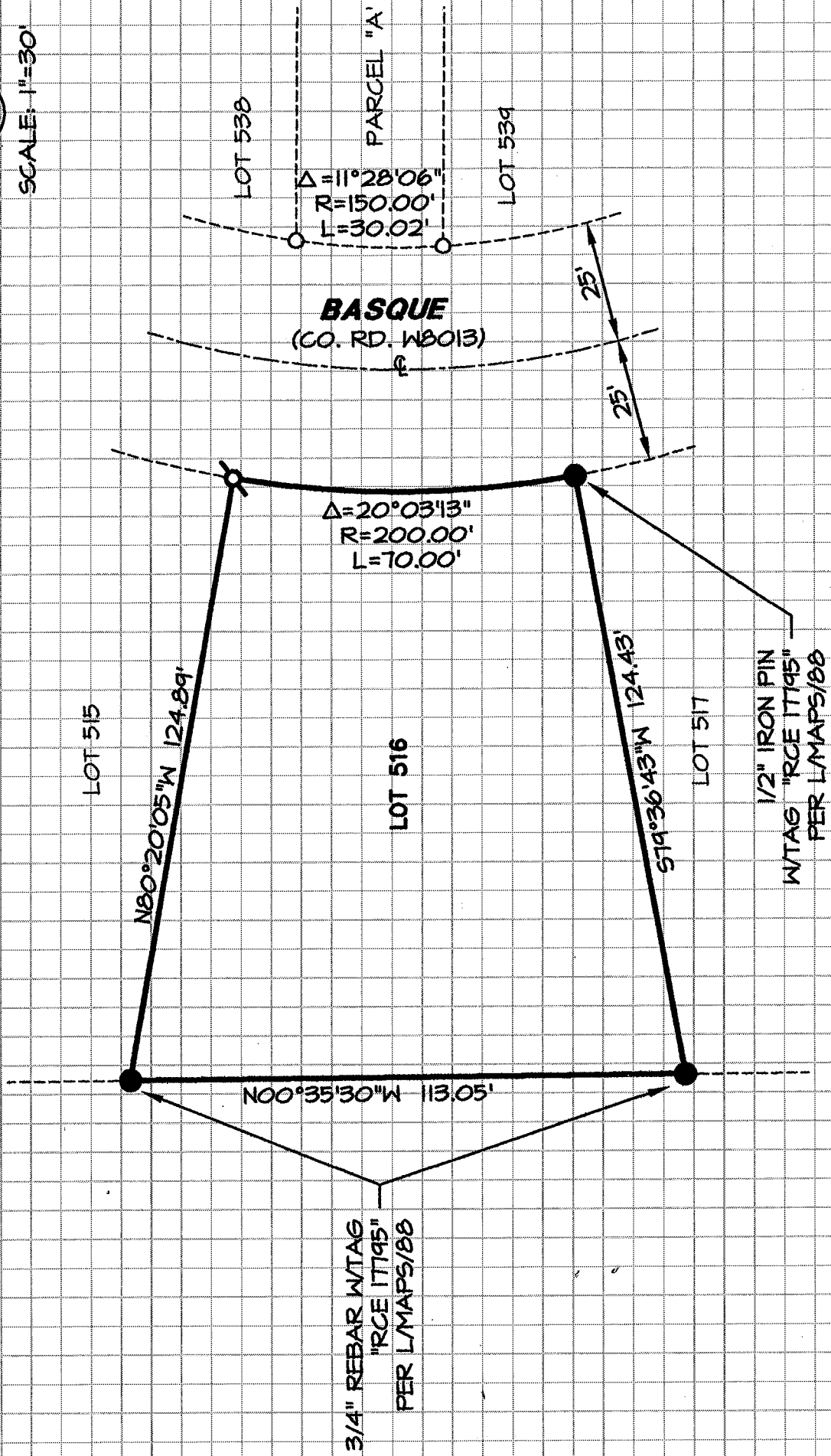
County Surveyor's Comment

BOOK 17 CORNER RECORDS PAGE 34

DATE: 4/20/14  
JOB: 13-06-03



SCALE: 1"=30'



**BASQUE**  
(CO. RD. W8013)

**LEGEND**

- FOUND MONUMENT AS NOTED
- ⊙ SET 5/8" REBAR W/CAP "PLS 5051"
- DIMENSION POINT - NOTHING FOUND OR SET

**ABNETT & ASSOCIATES, INC.**  
LAND SURVEYORS & PLANNERS  
120 COUNTRY CLUB DR., NO. 13  
INCLINE VILLAGE, NV 89451