

CORNER RECORD

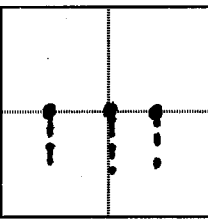
COUNTY OF PLACER, CALIFORNIA

City of Unincorporated

Document Number 20140028

Brief Legal Description NW and NE corner Par. B, and NE cor. Par. C, 7-PM-9.

PLS Job No. 833



S. 36
T. 12 N
R. 5 E

CORNER TYPE

- Government Corner
- Meander
- Rancho
- Control
- Property
- Other

Date of Survey 2/19/14

COORDINATES

(Optional)

N. _____
 E. _____
 Zone _____ Datum _____
 Elev. _____

Corner --- Left as found Found and tagged Established Reestablished Rebuilt

Identification and type of corner found: Evidence used to identify or procedure used to establish or reestablish corner:
Found Railroad spikes in roadway as noted per Book 7 PM Page 9 and C.R. 20090011 filed in Bk.12 C.R. 95
Tied railroad spikes to traverse points along south edge of East Catlett Road.

A description of the physical condition of the monument as found and as set or reset:
On site visit in early May, 2014 monuments were found in place. They were not destroyed by construction activities for reclaimed water line, but may be paved over at completion of construction. Reference points remain.

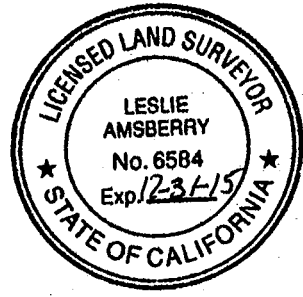
SURVEYOR'S STATEMENT

This Corner Record was prepared by me or under my direction
 in conformance with the Professional Land Surveyors' Act
 on May 22, 2014
 Signed Richard A. Marino
 L.S. or R.C.E. Number 6376



COUNTY SURVEYOR'S STATEMENT

This Corner Record was received _____ 20____
 and examined and filed September 25, 2014
 Signed Leslie Amberry Title County Surveyor
 L.S. or R.C.E. Number 6584



County Surveyor's Comment _____

BOOK 17 CORNER RECORDS PAGE 35

LEGEND:

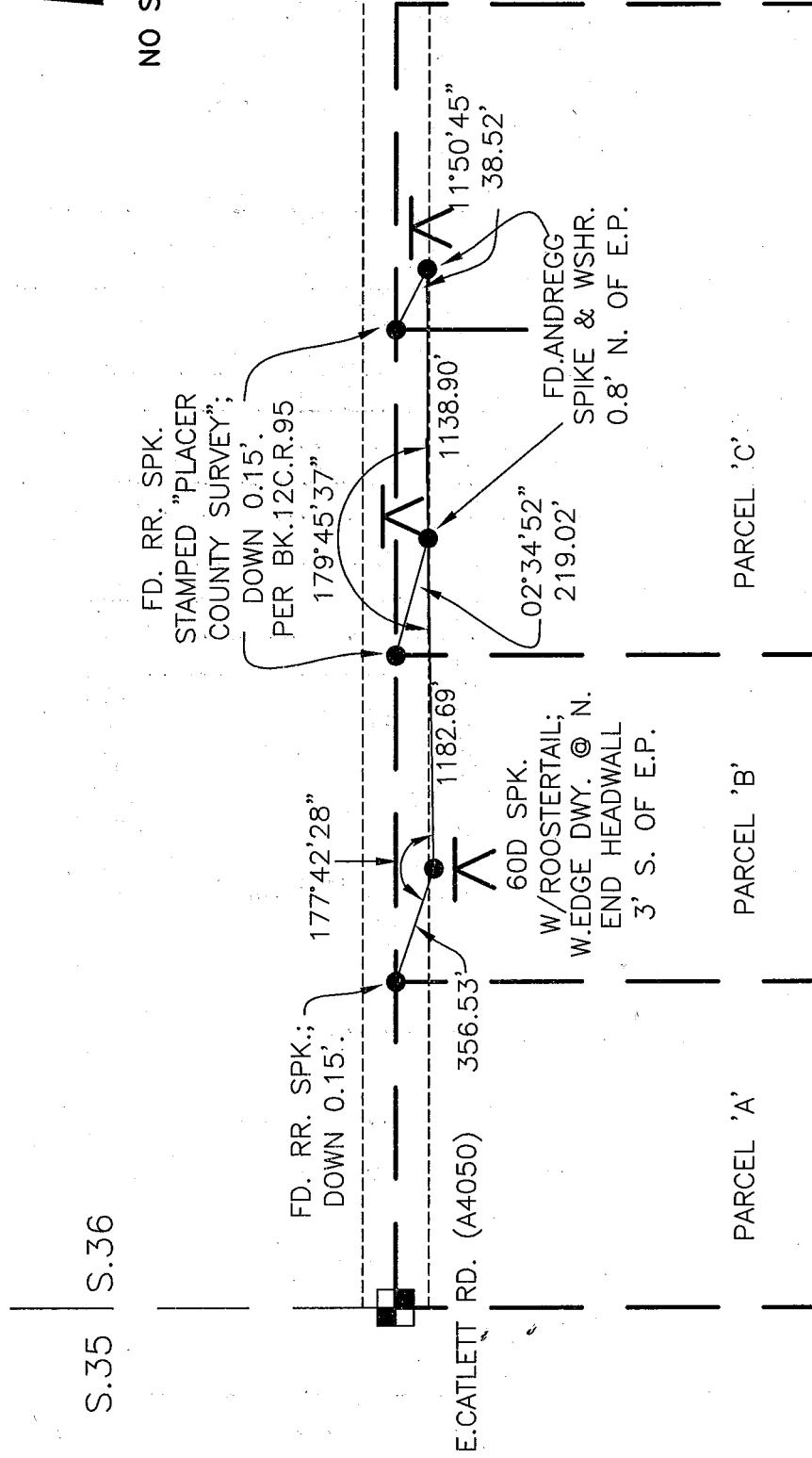
● FD. OR SET AS NOTED

▣ QUARTER CORNER

∧ INSTRUMENT STATION



NO SCALE



7 PM 9