

CORNER RECORD

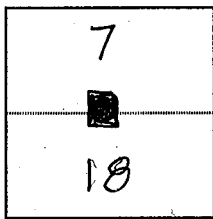
COUNTY OF PLACER, CALIFORNIA

City of Unincorporated

Document Number 20140045

Brief Legal Description Quarter Corner common to S. 7 & 18 per Bk 31PM 117

PLS Job No. 833



S. 7 & 18

T. 12 N

R. 7 E

CORNER TYPE

- Government Corner Control
 Meander Property
 Rancho Other
 Date of Survey 4/16/14

COORDINATES

(Optional)

N. _____
 E. _____
 Zone _____ Datum _____
 Elev. _____

Corner --- Left as found Found and tagged Established Reestablished Rebuilt

Identification and type of corner found: Evidence used to identify or procedure used to establish or reestablish corner:
Found 1-1/2" copperweld monument in Virginiatown Road stamped LS 3636 and shown on 31 PM 117 and numerous other references.

A description of the physical condition of the monument as found and as set or reset:
Monument was found in good condition, down 0.1', prior to waterline construction. Will have to be revisited after construction to determine status.

SURVEYOR'S STATEMENT

This Corner Record was prepared by me or under my direction
 in conformance with the Professional Land Surveyors' Act
 on May 30, 20 14
 Signed Richard A. Marino
 L.S. or R.C.E. Number 6376



COUNTY SURVEYOR'S STATEMENT

This Corner Record was received _____ 20 _____
 and examined and filed September 25 20 14
 Signed Leslie Amsberry Title County Surveyor
 L.S. or R.C.E. Number 6584



County Surveyor's Comment _____

BOOK 17 CORNER RECORDS PAGE 37

