

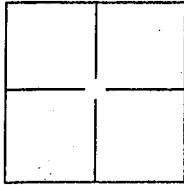
CORNER RECORD

Document Number 20140065

City of Roseville

County of Placer, California

Brief Legal Description Cl. Blue Oaks Blvd. btwn. Foothills & Niblick per
29 PM 136



S21
T11N
R6E

CORNER TYPE

Government Corner Control
 Meander Property
 Rancho Other

Date of Survey 6-30-14

COORDINATES(Optional)

N. _____
 E. _____
 Zone _____ NAD27 NAD83
 NAD83 Epoch _____
 Elev. _____
 Vert. Datum: NGVD29 NADV88
 Meas. Units: Metric Imperial

Corner - Left as found Found and tagged Established Reestablished Rebuilt

Identification and type of corner found: Evidence used to identify or procedure used to establish or reestablish the corner:
Fnd. std. City monument well at Intx. Blue Oaks Blvd. & Foothills Blvd.
& at Intx. Foothills Blvd. & Albertsons Dr. per 29 PM 136 as B.O.B.
& reset destroyed mon.s in record position in mon. wells. Referenced
15 ROS 8 for fnd. mon. in mon. well at angle point not set in 29 PM 136.

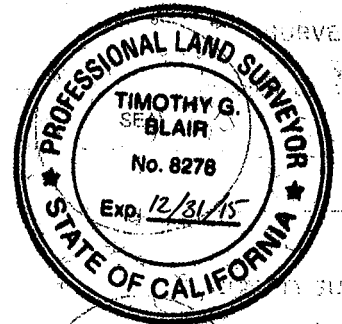
A description of the physical condition of the monument as found and as set or reset: Set 1-1/2" brass disk in
std. mon. well stamped PLS 8278 at Cl. angle point btwn. Foothills Blvd.
& Niblick Dr. & at Intx. of Blue Oaks Blvd. & Niblick Dr. due to
destruction during construction of Blue Oaks Widening Project. Mon.s
in mon. wells were not surveyed prior to destruction.

SURVEYOR'S STATEMENT

This Corner Record was prepared by me or under my direction in conformance with

the Land Surveyor's Act on August 29, 2014

Signed Timothy G. Blair P.L.S. or R.C.E. No.: 8278



COUNTY SURVEYOR'S STATEMENT

This Corner Record was received _____ and examined

and filed OCTOBER 27, 2014

Signed Leslie Amberry P.L.S. or R.C.E. No.: 6584

Title County Surveyor

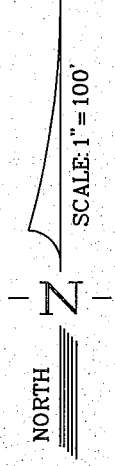
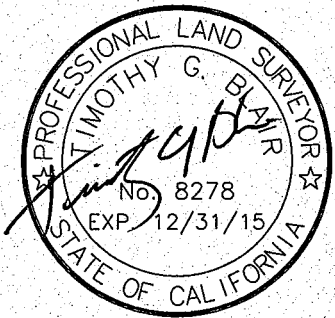
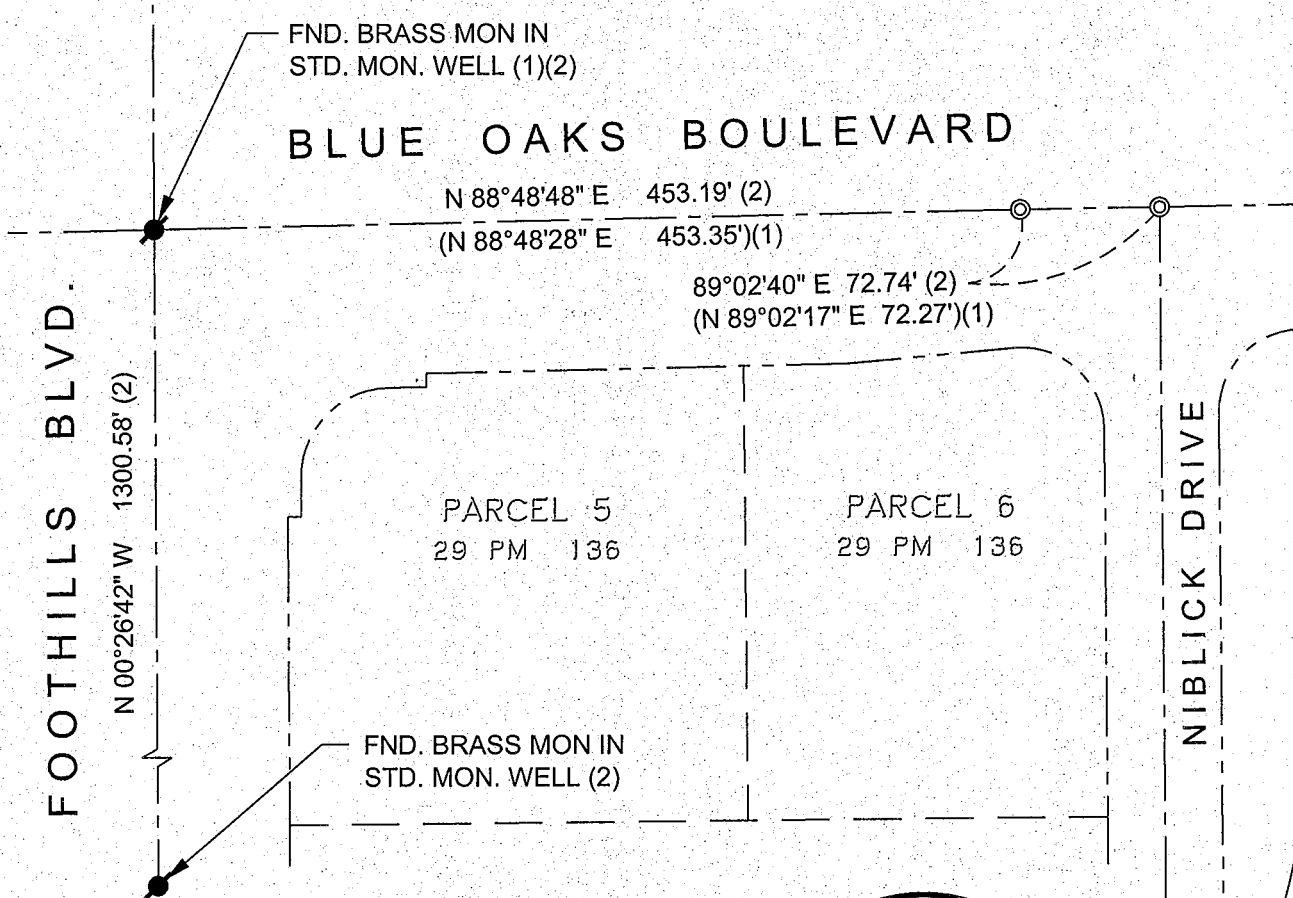
County Surveyor's Comment _____



BOOK 17 PAGE 43 CORNER RECORDS

CORNER RECORD EXHIBIT
CENTERLINE BLUE OAKS BOULEVARD
BETWEEN FOOTHILLS BLVD. & NIBLICK DR.
CITY OF ROSEVILLE
PLACER COUNTY, CALIFORNIA

BOOK 17 OF CORNER RECORDS PAGE 43



LEGEND:

- — FND. MONUMENT AS NOTED
- ◎ — SET STD. MON. WELL W/1-1/2" BRASS DISK STAMPED PLS 8278
- — DIMENSION POINT, NOTHING FND. NOTHING SET
- (1) — PER 15 ROS 8
- (2) — PER 29 PM 136

DA + SGI A Joint Venture

Engineers Planners Surveyors
 Doucet & Associates, Inc. + Surveyors Group, Inc.
 9001 Foothills Blvd., Suite 180
 Roseville, CA 95747
 (916) 789-0822 (916) 789-0824 (Fax)
 www.doucetandassociates.com - www.sgi20.com