

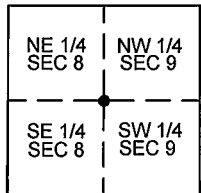
CORNER RECORD

COUNTY OF PLACER, CALIFORNIA

City of \_\_\_\_\_

Document Number 20140054

Brief Legal Description QUARTER CORNER BETWEEN SECTIONS 8 AND 9, T.10N, R.6E. MDB 2 / PM / 127



QUARTER CORNER BETWEEN SECTIONS 8 AND 9, T.10N., R.6E. M.D.M.

CORNER TYPE

Government Corner  Control   
 Meander  Property   
 Rancho  other   
 Date of Survey JULY 23, 2014

CORNER TYPE (optional)

N. \_\_\_\_\_  
 E. \_\_\_\_\_  
 Zone \_\_\_\_\_ Datum \_\_\_\_\_  
 Elev. \_\_\_\_\_

Corner - Left as Found  Found and Tagged  Established  Reestablished  Rebuilt

Identification and type of corner found: Evidence used to identify or procedure used to establish or reestablish corner:  
FOUND 2" BRASS DISC STAMPED "LS 3636" IN CONCRETE MONUMENT BOX PER BOOK 2 OF PARCEL MAPS, PAGE 127, O.R.P.C. FROM FOUND MONUMENT, ESTABLISHED REFERENCE POINTS PRIOR TO CONSTRUCTION OF BRIDGE REPLACEMENT.

A description of the physical condition of the monument as found and as set or reset:  
SET WITNESS CORNER AT 50.00' SOUTH OF FOUND QUARTER CORNER, 3-1/4" ALUMINUM DISC IN CONCRETE MONUMENT BOX. SEE REVERSE FOR DESCRIPTIONS OF THE SET REFERENCE POINTS.

SURVEYOR'S STATEMENT

This Corner Record was prepared by me or under my direction in conformance with the Land

Surveyors' Act on OCTOBER 28 2014

Signed [Signature] L.S. or R.C.E. Number LS 7941

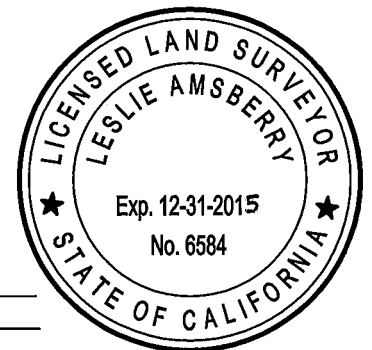


COUNTY SURVEYOR'S STATEMENT

This Corner Record was received \_\_\_\_\_ 20 \_\_\_\_\_ and examined

and filed November 24, 2014 20 \_\_\_\_\_

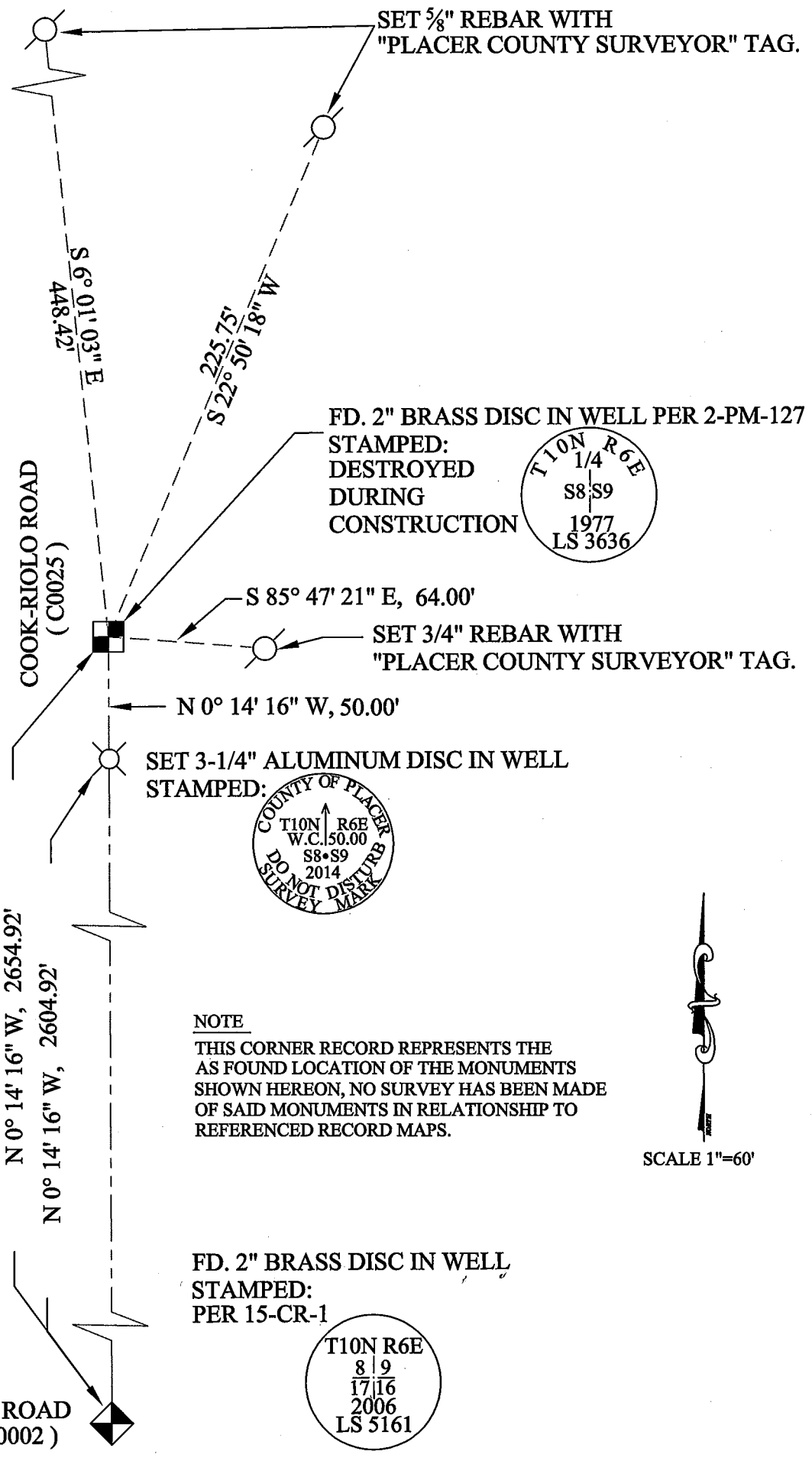
Signed [Signature] Title County Surveyor



County Surveyor's Comment:

xx \_\_\_\_\_  
 \_\_\_\_\_  
 \_\_\_\_\_

BOOK 17 OF CORNER RECORDS, PAGE 45



**NOTE**  
 THIS CORNER RECORD REPRESENTS THE AS FOUND LOCATION OF THE MONUMENTS SHOWN HEREON, NO SURVEY HAS BEEN MADE OF SAID MONUMENTS IN RELATIONSHIP TO REFERENCED RECORD MAPS.

