

CORNER RECORD

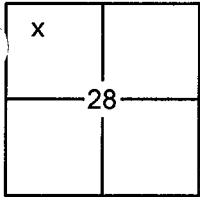
Document Number

20140090

City of _____

County of PLACER, California

Brief Legal Description LOT 21, CARNELIAN HEIGHTS SUBDIVISION, UNIT NO. 1, G/MAPS/23 O.R.P.C.



SEC. 28
T. 16 N.
R. 17 E.
M.D.B. & M.

CORNER TYPE

Government Corner Control
 Meander Property
 Rancho Other
 Date of Survey 9/29/2014

COORDINATES (OPTIONAL)

N. _____
 E. _____
 Zone _____ Datum _____
 Elev. _____
 Vert. Datum: NGVD29 NAVD88
 Meas. Units: Metric Imperial

CORNER- Left as Found Found and Tagged Established Reestablished Rebuilt

Identification and type of corner found: Evidence used to identify or procedure used to establish or reestablish the corner:

USED RECORD DIMENSIONS AND FOUND MONUMENTS PER G/MAPS/23, 9/CR/77 AND 15/CR/04 O.R.P.C., TO REESTABLISH THE MISSING CORNER OF LOT 21, AS SHOWN ON THE ACCOMPANYING PLAT.

A description of the physical condition of the monument as found and as set or reset:

- SET 5/8" REBAR WITH YELLOW PLASTIC CAP LS-7429 AS SHOWN ON PLAT
- FOUND MONUMENT AS SHOWN ON PLAT

SURVEYOR'S STATEMENT

This Corner Record was prepared by me or under my direction in conformance with the

Land Surveyors Act on October 13, 2014

Signed [Signature] P.L.S. or R.C.E. No. 7429



COUNTY SURVEYOR'S STATEMENT

This Corner Record was received _____

and examined and filed November 24, 2014

Signed [Signature] P.L.S. or B.C.E. No. 6584

Title County Surveyor

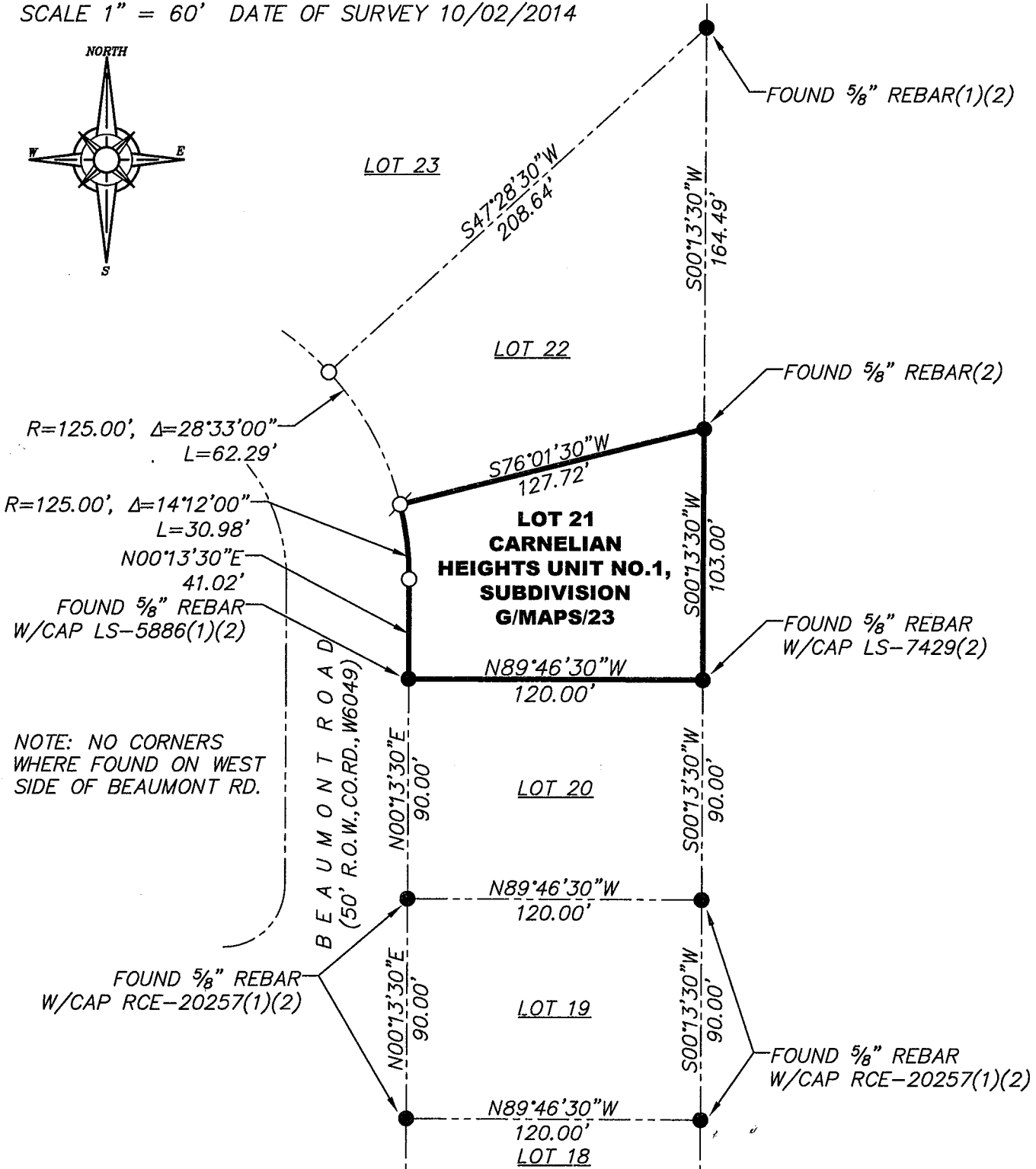
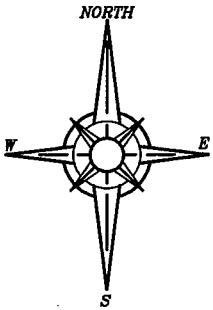


COUNTY SURVEYOR'S COMMENT:

BOOK 17 CORNER RECORDS PAGE 52

PLAT OF SURVEY

LOT 21, CARNELIAN HEIGHTS SUBDIVISION, UNIT NO. 1, AS FILED IN BOOK G OF MAPS AT PAGE 23, OFFICIAL RECORDS PLACER COUNTY, CALIFORNIA. A PORTION OF THE NORTHWEST 1/4 SECTION 28, TOWNSHIP 16 N., RANGE 17 E., M.D.B. & M. SCALE 1" = 60' DATE OF SURVEY 10/02/2014



BOOK 17 CORNER RECORDS PAGE 52

- FOUND MONUMENT AS SHOWN HEREON
- SET 5/8" REBAR WITH YELLOW PLASTIC CAP L.S. 7429 OR OTHERWISE NOTED
- DIMENSION POINT (NOTHING FOUND OR SET)
- (1) PER 9/CR/77 (2) PER 15/CR/4

J/N 2455.00