

CORNER RECORD

Document Number

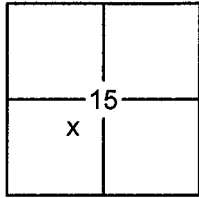
20140059

City of _____

County of

PLACER

California

Brief Legal Description LOT 45, AGATE BAY VISTA SUBDIVISION, H/MAPS/65 O.R.P.C.

SEC. 15
T. 16 N.
R. 17 E.
M.D.B. & M.

CORNER TYPE

Government Corner Control
 Meander Property
 Rancho Other
 Date of Survey 5/13/2014

COORDINATES (OPTIONAL)

N. _____
 E. _____
 Zone _____ Datum _____
 Elev. _____
 Vert. Datum: NGVD29 NAVD88
 Meas. Units: Metric Imperial

CORNER- Left as Found Found and Tagged Established Reestablished Rebuilt

Identification and type of corner found: Evidence used to identify or procedure used to establish or reestablish the corner:

USED RECORD DIMENSIONS AND FOUND MONUMENTS PER H/MAPS/65 AND 6/CR/67 O.R.P.C.,
 TO REESTABLISH THE MISSING CORNER OF LOT 45, AS SHOWN ON THE ACCOMPANYING PLAT.

A description of the physical condition of the monument as found and as set or reset:

- SET 5/8" REBAR WITH YELLOW PLASTIC CAP LS-7429 (UNLESS OTHERWISE NOTED)
 FOUND MONUMENT AS SHOWN ON PLAT
 DIMENSION POINT (NOTHING FOUND OR SET)

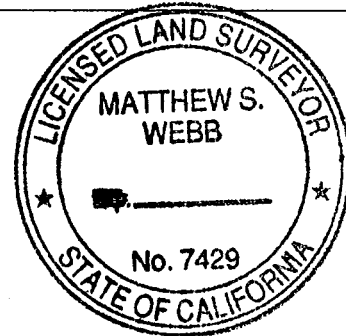
SURVEYOR'S STATEMENT

This Corner Record was prepared by me or under my direction in conformance with the

Land Surveyors Act on

March 31, 2015

Signed

P.L.S. or R.C.E. No. 7429

COUNTY SURVEYOR'S STATEMENT

This Corner Record was received _____

and examined and filed

April 29, 2015

Signed

P.L.S. or R.C.E. No. 6584

Title

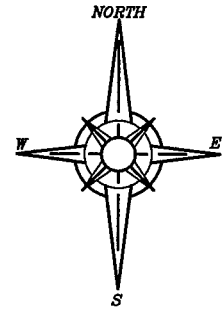
County Surveyor

COUNTY SURVEYOR'S COMMENT:

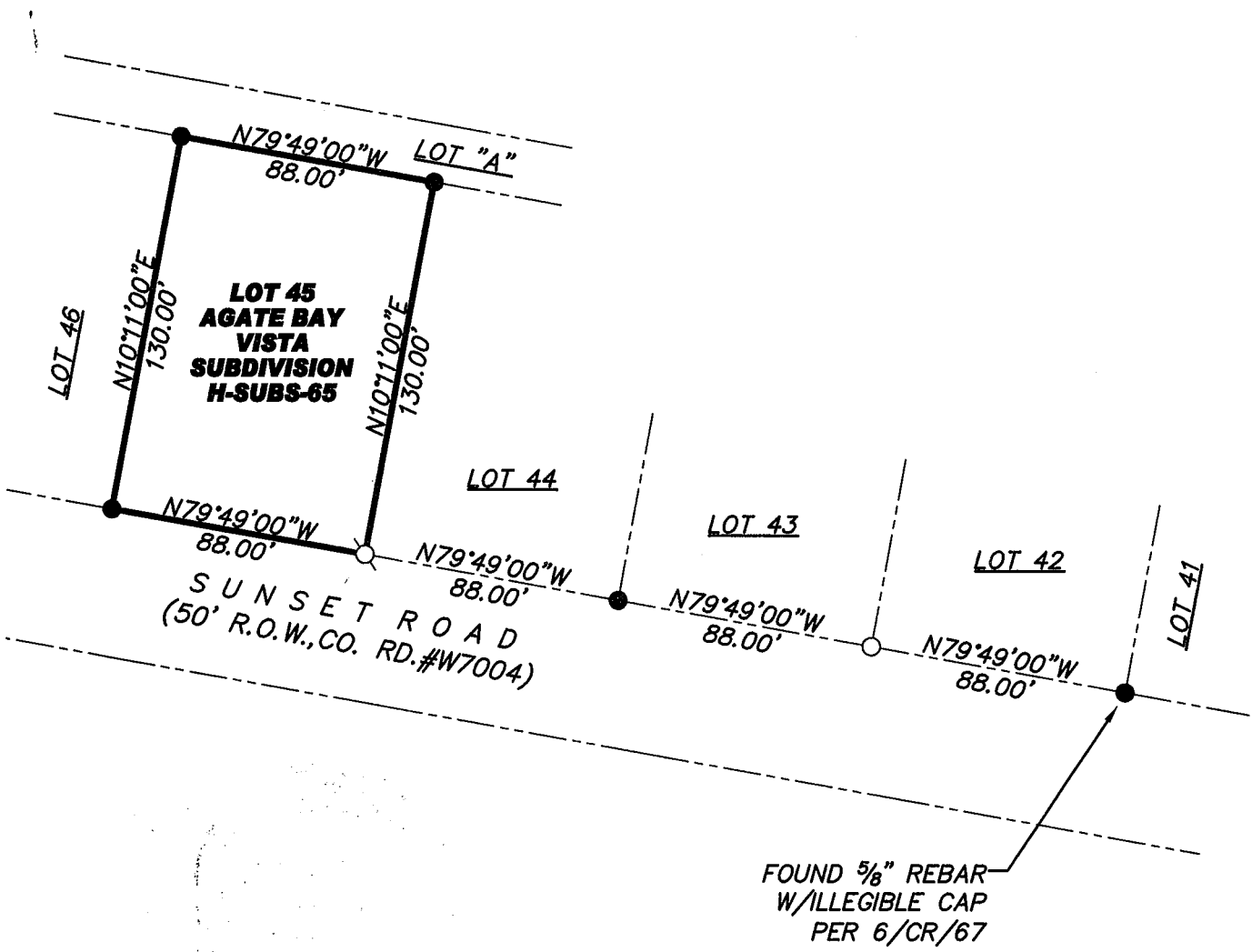
PLAT OF SURVEY

LOT 45, AGATE BAY VISTA SUBDIVISION, AS FILED BOOK H OF MAPS AT PAGE 65, OFFICIAL RECORDS PLACER COUNTY, CALIFORNIA. A PORTION OF SECTION 15, TOWNSHIP 16 N., RANGE 17 E., M.D.B. & M.

SCALE 1" = 60' DATE OF SURVEY 7/10/2014



BOOK 17 CORNER RECORDS PAGE 86



- FOUND 1/2" REBAR PER H/MAPS/65 (UNLESS OTHERWISE NOTED)
- DIMENSION POINT (NOTHING FOUND OR SET)
- SET 5/8" REBAR WITH YELLOW PLASTIC CAP L.S. 7429

J/N 2393.00